

XPLR-M9

Explorer kit for u-blox M9 standard precision GNSS

User guide



Abstract

This document leads you through the fast and efficient use of the M9 Explorer Kit with the dedicated u-start GNSS evaluation tool.

Document information

Title	XPLR-M9	
Subtitle	Explorer kit for u-blox M9 standard precision GNSS	
Document type	User guide	
Document number	UBX-19041842	
Revision and date	R02	13-Feb-2020
Disclosure restriction	Public	

This document applies to the following products:

Product name	Type number	Firmware version	PCN reference
XPLR-M9	XPLR-M9-00-00	SPG 4.03	N/A

u-blox reserves all rights to this document and the information contained herein. Products, names, logos and designs described herein may in whole or in part be subject to intellectual property rights. Reproduction, use, modification or disclosure to third parties of this document or any part thereof without the express permission of u-blox is strictly prohibited.

The information contained herein is provided "as is" and u-blox assumes no liability for the use of the information. No warranty, either express or implied, is given with respect to, including but not limited to, the accuracy, correctness, reliability and fitness for a particular purpose of the information. This document may be revised by u-blox at any time. For most recent documents, please visit www.u-blox.com.

Copyright © 2020, u-blox AG.

u-blox is a registered trademark of u-blox Holding AG in the EU and other countries.

Contents

1 Overview.....	4
1.1 Product description.....	4
1.2 Kit contents.....	4
1.3 System requirements.....	4
1.4 Safety precautions.....	4
2 Getting started.....	5
2.1 XPLR-M9 evaluation with u-start (default).....	5
2.1.1 u-start supported features.....	5
2.2 XPLR-M9 evaluation with u-center.....	6
3 Approvals.....	7
4 u-start known limitations.....	8
5 Troubleshooting.....	9
Related documents.....	10
Revision history.....	11

1 Overview

1.1 Product description

Thanks to the compact design, user-friendly interfaces, simplified and intuitive u-start evaluation software, XPLR-M9 is the perfect early evaluation tool for experiencing the best GNSS performance of the u-blox M9 standard precision GNSS technology.

The built-in USB interface provides both power supply and high-speed data transfer. In addition to the default simplified u-start evaluation software, XPLR-M9 can be used with u-blox u-center for extensive configuration, further testing and data analysis.



Figure 1: Explorer kit (60 x 32 x 15 mm)

1.2 Kit contents

The delivered package contains:

- XPLR-M9 unit
- USB cable (type C)
- Active GNSS antenna
- Quick start card

1.3 System requirements

- PC with USB interface
- Operating system: Microsoft Windows 7 onwards (x86 and x64 versions)

1.4 Safety precautions

XPLR-M9 must be supplied by a PS1 class limited power source. See section 6.2.2.4 of IEC 62368-1:2018 [11] for more information on the PS1 class.

In addition to a limited power source, only ES1 class circuits are to be connected to the XPLR-M9, including interfaces and antennas. See section 5.2.1.1 of IEC 62368-1:2018 [11] for more information on the ES1 class.

2 Getting started

2.1 XPLR-M9 evaluation with u-start (default)

You can explore u-blox M9 performance with u-start evaluation tool in four simple steps:

1. Connect the XPLR-M9 kit to a PC with a USB cable. The USB driver will be automatically installed when connecting the kit to the PC for the first time (requires internet connection). A removable flash device called XPLR-M9 will be visible in the PC after automatic driver installation.
2. Run u-start installer located in the XPLR-M9 device folder (administration rights for the PC are needed to install the u-start).
3. Connect to active GNSS antenna or connect to simulator.
4. Start u-start evaluation tool.

2.1.1 u-start supported features

After a successful installation, u-start is available in the Start menu. Select u-start evaluation tool to open the user interface.

u-start v19.08.02 supports the features below:

- **GNSS selection tab**
 - You can choose between 4 concurrent GNSS constellations and see the amount of satellites visible in sky view.
 - SBAS and QZSS Augmentation systems enabled, you can select either or use both of them.
 - You can see your own position on Google map view.
 - Satellite signal view is enabled.
 - Prompts the user for the software update if newer version of the application is found.

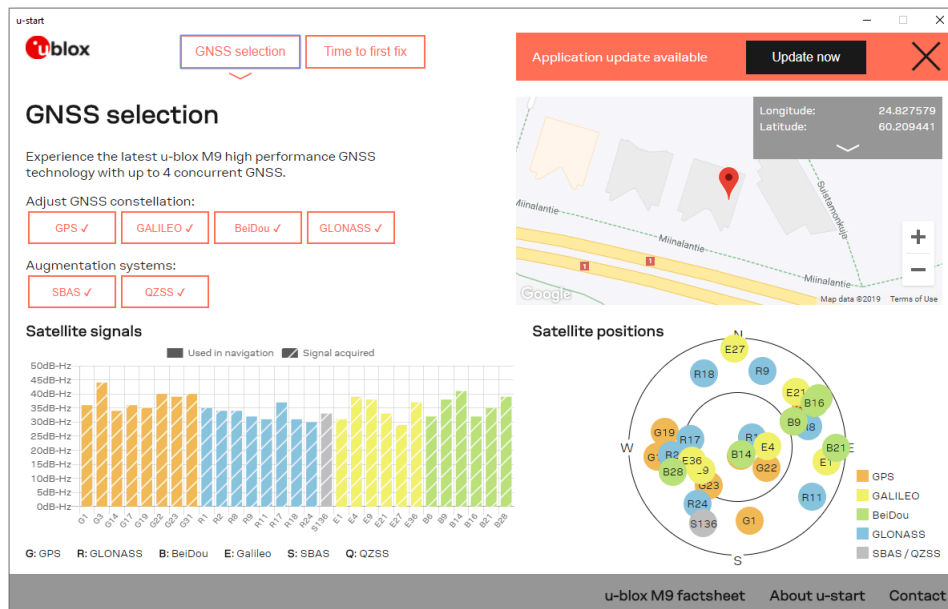


Figure 2: GNSS selection view

• Time to first fix (TTFF) tab

- This view enables you to see and compare the performance of M9 receiver while evaluating cold start and hot start with or without the AssistNow Online or AssistNow Offline service.
- AssistNow Online service requires an internet connection. You can get a valid temporary token needed for the AssistNow services simply by clicking **Go to registration** button as indicated in [Figure 3](#).

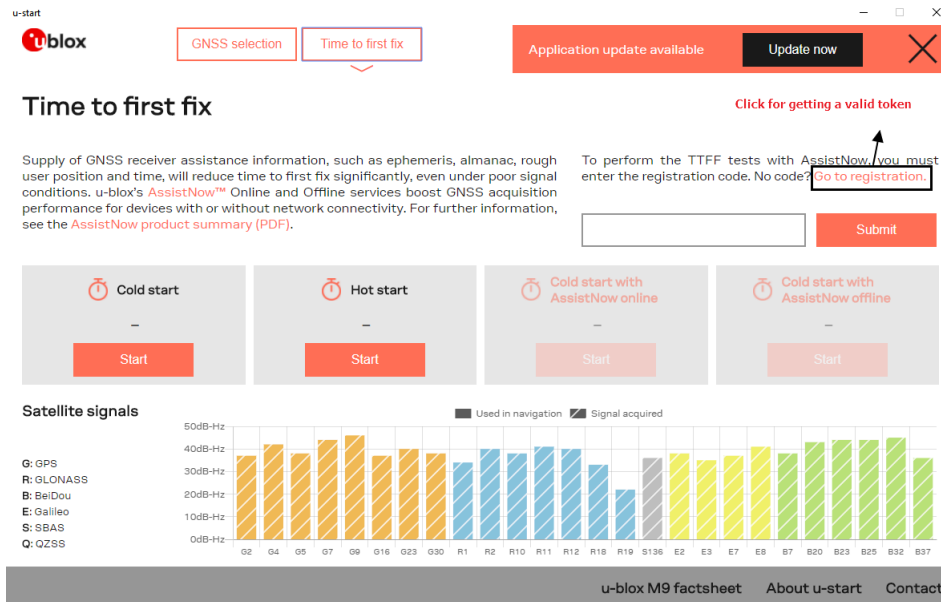


Figure 3: Time to first fix view

• Other information tabs

- **u-blox M9 factsheet:** Provides highlights of the u-blox M9 GNSS positioning technology.
- **About u-start:** Provides information about u-start version and license details as well as AssistNow registration code.
- **Contact:** Takes you to the u-blox contact page.

2.2 XPLR-M9 evaluation with u-center

u-center evaluation software can be used as an optional interactive tool for additional configuration, testing, visualization, data analysis and changing the firmware. The baud rate needs to be set to 460,800 for evaluation with u-center. u-center can be downloaded from [u-blox webpage](#).

For more information about u-center, refer to the u-center User guide [1].

3 Approvals

The XPLR-M9 is designed to in compliance with the essential requirements and other relevant provisions of Radio Equipment Directive (RED) 2014/53/EU.

The XPLR-M9 complies with the Directive 2011/65/EU (EU RoHS 2) and its amendment Directive (EU) 2015/863 (EU RoHS 3).

The Declaration of Conformity (DoC) is available at [u-blox website](#) within Support > Product Resources > Conformity Declaration.

4 u-start known limitations

- At application startup, the GNSS screen may be shown for a couple of seconds before displaying the "Antenna is not connected" warning dialog.
- Only the u-start application can be updated automatically, XPLR-M9 receiver firmware update is not yet supported in the current u-start v19.08.02. Use u-center for GNSS firmware update, refer to the u-center User guide [\[1\]](#) for more information.
- If an error occurs when using the AssistNow Online, an invalid time is displayed (usually the last known valid time).

5 Troubleshooting

Explorer Kit is not connected

When trying to run multiple instances of the u-start application or when u-center is already connected to the Explorer kit, the second instance remains in the "Explorer Kit not connected" error state.

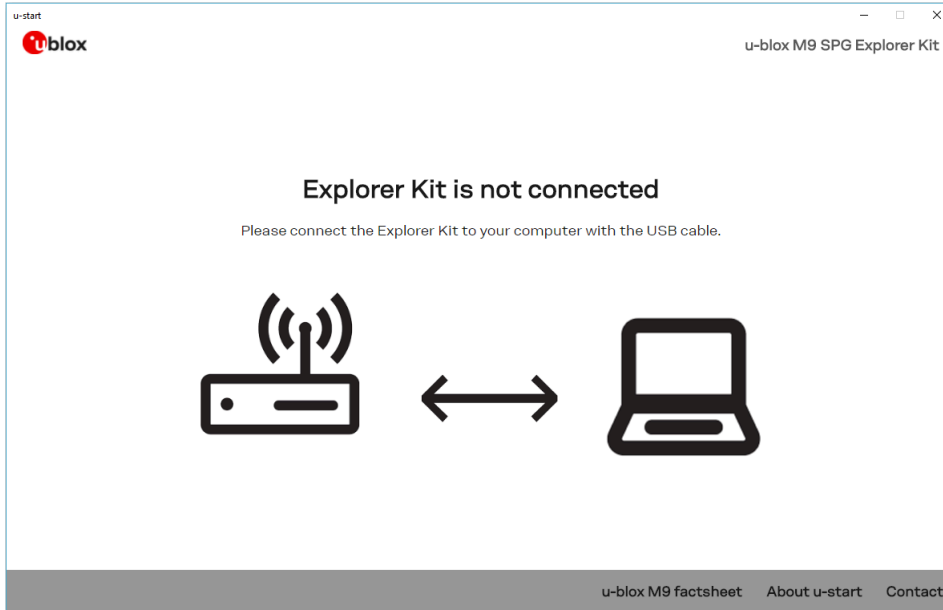


Figure 4: Multiple instance of u-start shows this not connected state

Close duplicate instance/instances of u-start or disconnect the Explorer kit from u-center and try again.

Related documents

- [1] u-center User guide, doc. no. UBX-13005250
- [2] UBX-M9140-KB Integration manual, doc. no. UBX-18020542 (NDA required)
- [3] UBX-M9140-KB Interface description, doc. no. UBX-19039383 (NDA required)
- [4] UBX-M9140-KB Data sheet, doc. no. UBX-18020412 (NDA required)
- [5] UBX-M9140-KA Integration manual, doc. no. UBX-19041089 (NDA required)
- [6] UBX-M9140-KA Interface description, doc. no. UBX-19042181 (NDA required)
- [7] UBX-M9140-KA Data sheet, doc. no. UBX-18021372 (NDA required)
- [8] NEO-M9N Integration manual, doc. no. UBX-19014286
- [9] NEO-M9N Interface description, doc. no. UBX-19035940
- [10] NEO-M9N Data sheet, doc. no. UBX-19014285
- [11] Information technology equipment – Safety Standard [IEC 62368-1:2018](#)



For regular updates to u-blox documentation and to receive product change notifications please register on our [homepage](#).

Revision history

Revision	Date	Name	Status / Comments
R01	1-Nov-2019	msul	Initial release
R02	13-Feb-2020	msul	Added sections 3 approvals and 1.4 safety precautions, updated FW version to SPG 4.03, added M9140-KA documentation as reference and removed one FW limitation

Contact

For complete contact information visit us at www.u-blox.com.

u-blox Offices

North, Central and South America

u-blox America, Inc.

Phone: +1 703 483 3180
E-mail: info_us@u-blox.com

Regional Office West Coast

Phone: +1 408 573 3640
E-mail: info_us@u-blox.com

Technical Support

Phone: +1 703 483 3185
E-mail: support_us@u-blox.com

Headquarters

Europe, Middle East, Africa

u-blox AG

Phone: +41 44 722 74 44
E-mail: info@u-blox.com
Support: support@u-blox.com

Asia, Australia, Pacific

u-blox Singapore Pte. Ltd.

Phone: +65 6734 3811
E-mail: info_ap@u-blox.com
Support: support_ap@u-blox.com

Regional Office Australia

Phone: +61 2 8448 2016
E-mail: info_au@u-blox.com
Support: support_ap@u-blox.com

Regional Office China (Beijing)

Phone: +86 10 68 133 545
E-mail: info_cn@u-blox.com
Support: support_cn@u-blox.com

Regional Office China (Chongqing)

Phone: +86 23 6815 1588
E-mail: info_cn@u-blox.com
Support: support_cn@u-blox.com

Regional Office China (Shanghai)

Phone: +86 21 6090 4832
E-mail: info_cn@u-blox.com
Support: support_cn@u-blox.com

Regional Office China (Shenzhen)

Phone: +86 755 8627 1083
E-mail: info_cn@u-blox.com
Support: support_cn@u-blox.com

Regional Office India

Phone: +91 80 4050 9200
E-mail: info_in@u-blox.com
Support: support_in@u-blox.com

Regional Office Japan (Osaka)

Phone: +81 6 6941 3660
E-mail: info_jp@u-blox.com
Support: support_jp@u-blox.com

Regional Office Japan (Tokyo)

Phone: +81 3 5775 3850
E-mail: info_jp@u-blox.com
Support: support_jp@u-blox.com

Regional Office Korea

Phone: +82 2 542 0861
E-mail: info_kr@u-blox.com
Support: support_kr@u-blox.com

Regional Office Taiwan

Phone: +886 2 2657 1090
E-mail: info_tw@u-blox.com
Support: support_tw@u-blox.com