

Al tubular terminals - ring terminals

Aluminium terminals, longitudinally sealed, KRA type	241
Aluminium terminals, longitudinally sealed, KRAC type	243
Tubular terminals, longitudinally sealed with sector shaped hole, KRAS...SE type	245
Tubular terminals, longitudinally sealed with sector shaped hole, KRASC...SE type	246
Aluminium terminals, KDA type	247
Aluminium terminals, KDAC type	249
Tubular terminals for 2 bolts, KDA ... 2X type	251
Tubular terminals for 4 bolts, KDA...4X type	252
Aluminium thin-walled terminals, 2KAm type	253

Al tubular terminals - joints

Tubular thin-walled connectors, 2ZA type	255
Compression connectors, LA ... type	256
Ceduction compression connectors, LA .../... type	257
Compression connectors with barrier, LAP ... type	258
Reducing tubular cable connectors with barrier, LAP .../... type	259
Compression connectors with barrier, LAWP ... type	260
Reducing tubular cable connectors with barrier, LAWP .../... type	261
Compression connectors, LAW ... type	262
Reducing tubular cable connectors, LAW .../... type	263

Al tubular terminals - pins

Aluminium pin terminals for plastic insulated cables acc. to VDE 0295, BAK type	264
---	-----

Aluminium terminals, longitudinally sealed, KRA type

FEATURES & BENEFITS

- ring terminal Al, tight, as per DIN, without galvanic tin plating
- description of cable cross-section, terminal size and crimping die number on crimped part surface
- to be used in most demanding connections

MECHANICAL DATA

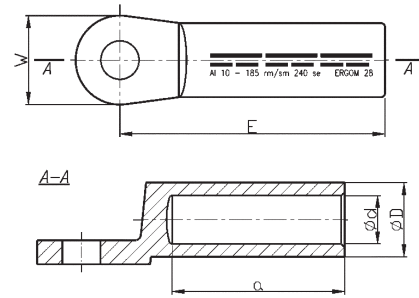
Material	Al
Covering	uncoated

CERTIFICATES & STANDARDS

Standards	EN 61238-1
Design	DIN 46329

NOTE!

- terminals are filled with special contact grease, packed in a separate foil bag;
- sector-shaped conductors must be rounded with special dies.



Type	Cross-section, re/se [mm ²]	Cross-section, rm/sm [mm ²]	d	D	a min	E	W	Screw hole	DIN	Socket code no.	Lz/s	Lz/w	Quantity in package [pcs]	Weight [kg]	
KRA 16/8	25	16	5,4	12,0	30	50	25	M8	-	12	2	4	100 / 10	1,66 / 0,17	
KRA 16/10								M10							1,62 / 0,17
KRA 16/12								M12							1,54 / 0,16
KRA 25/8	35	25	6,8	12,0	30	50	25	M8	√	12	2	4	100 / 10	1,54 / 0,16	
KRA 25/10								M10						1,53 / 0,16	
KRA 25/12								M12						1,45 / 0,15	
KRA 35/8	50	35	8,0	14,0	42	62	25	M8	√	14	3	5	100 / 10	2,3 / 0,23	
KRA 35/10								M10						2,1 / 0,21	
KRA 35/12								M12						1,82 / 0,19	
KRA 35/14								M14						-	
KRA 50/8	70	50	9,8	16,0	42	62	25	M8	√	16	3	5	100 / 10	2,8 / 0,28	
KRA 50/10								M10						2,4 / 0,24	
KRA 50/12								M12						-	
KRA 50/14								M14						-	
KRA 70/8	95	70	11,2	18,5	52	72	25	M8	√	18	3	6	100 / 10	3,25 / 0,33	
KRA 70/10								M10						3,95 / 0,4	
KRA 70/12								M12						3,6 / 0,36	
KRA 70/14								M14						3,73 / 0,38	
KRA 70/16								M16						3,45 / 0,35	
KRA 95/10	120	95	13,2	22,0	56	75	25	M10	√	22	3	6	50 / 10	2,87 / 0,58	
KRA 95/12								M12						2,74 / 0,55	
KRA 95/14								M14						2,65 / 0,53	
KRA 95/16								M16						2,71 / 0,55	
KRA 120/10	150	120	14,7	23,0	56	80	30	M10	√	22	3	6	50 / 10	3,24 / 0,65	
KRA 120/12								M12						3,2 / 0,64	
KRA 120/14								M14						-	
KRA 120/16								M16						3,3 / 0,66	
KRA 150/10	185	150	16,3	25,0	60	90	30	M10	√	25	3	6	50 / 10	4,4 / 0,88	
KRA 150/12								M12						4,2 / 0,84	
KRA 150/14								M14						4,3 / 0,86	
KRA 150/16								M16						4,3 / 0,86	
KRA 150/20								M20						4,1 / 0,82	

Type	Cross-section, re/se [mm ²]	Cross-section, rm/sm [mm ²]	d	D	a min	E	W	Screw hole	DIN	Socket code no.	Lz/s	Lz/w	Quantity in package [pcs]	Weight [kg]
KRA 185/10	240	185	18,3	28,5	60	91	30	M10	√	28	3	6	50 / 10	5,25 / 1,05
KRA 185/12								M12						5,5 / 1,1
KRA 185/14								M14	-					5,75 / 1,15
KRA 185/16								M16	√					
KRA 185/20								M20	-					5,4 / 1,08
KRA 240/10	300	240	21,0	32,0	70	103	38	M10	-	32	3	8	50 / 10	8,2 / 1,64
KRA 240/12								M12	√					8,4 / 1,68
KRA 240/14								M14	-					7,95 / 1,59
KRA 240/16								M16	√					8 / 1,6
KRA 240/20								M20	√					7,75 / 1,55
KRA 300/12	-	300	23,3	34,0	70	103	38	M12	√	34	3	8	25 / 10	3,61 / 1,45
KRA 300/14								M14	-					4,1 / 1,64
KRA 300/16								M16	√					4,3 / 1,72
KRA 300/20								M20	√					4,2 / 1,68
KRA 400/14	-	400	26,0	38,5	74	116	38	M14	-	38	4	-	1	0,21
KRA 400/16								M16	√					
KRA 400/20								M20	√					
KRA 500/14	-	500	29,0	44,0	80	122	44	M14	-	44	4	-	1	0,29
KRA 500/16								M16	√					
KRA 500/20								M20	√					

Lz/s - Number of crimping - wide Lz/w - Number of crimping - narrow

Aluminium terminals, longitudinally sealed, KRAC type

FEATURES & BENEFITS

- ring terminal Al, tight, as per DIN, with galvanic tin plating
- description of cable cross-section, terminal size and crimping die number on crimped part surface
- to be used in most demanding connections, in Mediterranean conditions

MECHANICAL DATA

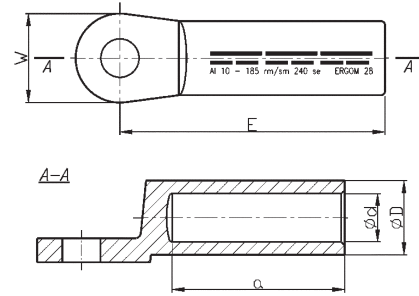
Material	Al
Covering	tin-plated

CERTIFICATES & STANDARDS

Standards	EN 61238-1
Design	DIN 46329

NOTE!

- terminals are filled with special contact grease, packed in a separate foil bag;
- sector-shaped conductors must be rounded with special dies.



Type	Cross-section, re/se [mm ²]	Cross-section, rm/sm [mm ²]	d	D	a min	E	W	Screw hole	DIN	Socket code no.	Lz/s	Lz/w	Quantity in package [pcs]	Weight [kg]	
KRAC 16/8	25	16	5,4	12,0	30	50	25	M8	-	12	2	4	100 / 10	1,66 / 0,17	
KRAC 16/10								M10							1,62 / 0,17
KRAC 16/12								M12							1,54 / 0,16
KRAC 25/8	35	25	6,8	12,0	30	50	25	M8	√	12	2	4	100 / 10	1,54 / 0,16	
KRAC 25/10								M10						1,53 / 0,16	
KRAC 25/12								M12						1,45 / 0,15	
KRAC 35/8	50	35	8,0	14,0	42	62	25	M8	√	14	3	5	100 / 10	2,3 / 0,23	
KRAC 35/10								M10						2,1 / 0,21	
KRAC 35/12								M12						1,82 / 0,19	
KRAC 35/14								M14						-	
KRAC 50/8	70	50	9,8	16,0	42	62	25	M8	√	16	3	5	100 / 10	2,8 / 0,28	
KRAC 50/10								M10						2,4 / 0,24	
KRAC 50/12								M12						-	
KRAC 50/14								M14						-	
KRAC 70/8	95	70	11,2	18,5	52	72	25	M8	√	18	3	6	100 / 10	3,25 / 0,33	
KRAC 70/10								M10						3,95 / 0,4	
KRAC 70/12								M12						3,6 / 0,36	
KRAC 70/14								M14						3,73 / 0,38	
KRAC 70/16								M16						3,45 / 0,35	
KRAC 95/10	120	95	13,2	22,0	56	75	25	M10	√	22	3	6	50 / 10	2,87 / 0,58	
KRAC 95/12								M12						2,74 / 0,55	
KRAC 95/14								M14						2,65 / 0,53	
KRAC 95/16								M16						2,71 / 0,55	
KRAC 120/10	150	120	14,7	23,0	56	80	30	M10	√	22	3	6	50 / 10	3,24 / 0,65	
KRAC 120/12								M12						3,2 / 0,64	
KRAC 120/14								M14						-	
KRAC 120/16								M16						3,3 / 0,66	
KRAC 150/10	185	150	16,3	25,0	60	90	30	M10	√	25	3	6	50 / 10	4,4 / 0,88	
KRAC 150/12								M12						4,2 / 0,84	
KRAC 150/14								M14						4,3 / 0,86	
KRAC 150/16								M16						4,3 / 0,86	
KRAC 150/20								M20						4,1 / 0,82	

Type	Cross-section, re/se [mm ²]	Cross-section, rm/sm [mm ²]	d	D	a min	E	W	Screw hole	DIN	Socket code no.	Lz/s	Lz/w	Quantity in package [pcs]	Weight [kg]
KRAC 185/10	240	185	18,3	28,5	60	91	30	M10	√	28	3	6	50 / 10	5,25 / 1,05
KRAC 185/12								M12						5,5 / 1,1
KRAC 185/14								M14						5,75 / 1,15
KRAC 185/16								M16						5,4 / 1,08
KRAC 185/20								M20						5,4 / 1,08
KRAC 240/10	300	240	21,0	32,0	70	103	38	M10	-	32	3	8	50 / 10	8,2 / 1,64
KRAC 240/12								M12						8,4 / 1,68
KRAC 240/14								M14						7,95 / 1,59
KRAC 240/16								M16						8 / 1,6
KRAC 240/20								M20						7,75 / 1,55
KRAC 300/12	-	300	23,3	34,0	70	103	38	M12	√	34	3	-	25 / 10	3,61 / 1,45
KRAC 300/14								M14						4,1 / 1,64
KRAC 300/16								M16						4,3 / 1,72
KRAC 300/20								M20						4,2 / 1,68

Lz/s - Number of crimping - wide Lz/w - Number of crimping - narrow

Tubular terminals, longitudinally sealed with sector-shaped hole, KRAS...SE type

FEATURES & BENEFITS

- ring terminal, sealed, Al, crimped part as per DIN, without galvanic tin plating
- for sector-shaped conductors of SM Class II profile cables; does not require conductor rounding
- to be used in most demanding connections

MECHANICAL DATA

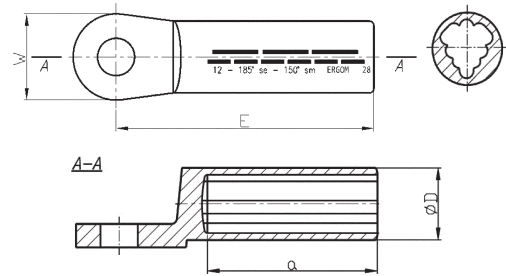
Material	Al
Covering	uncoated

CRIMPING SHAPE

Number of crimping - wide	3
---------------------------	---

NOTE!

Terminals are filled with special contact grease, packed in a separate foil bag.
No grease - on request.



Type	Cross-section, se [mm ²]	Cross-section, sm [mm ²]	D	a	E	W	Screw hole	Socket code no.	Lz/w	Quantity in package [pcs]	Weight [kg]
KRAS 50/8 SE	50	35	16,0	42	62	25	M8	16	5	100 / 10	2,64 / 0,27
KRAS 50/10 SE							M10				2,6 / 0,26
KRAS 50/12 SE							M12				2,4 / 0,24
KRAS 50/14 SE							M14				
KRAS 70/8 SE	70	50	18,5	52	72	25	M8	18	6	100 / 10	3,15 / 0,32
KRAS 70/10 SE							M10				3,63 / 0,37
KRAS 70/12 SE							M12				3,2 / 0,32
KRAS 70/14 SE							M14				
KRAS 95/10 SE	95	70	22,0	56	75	25	M10	22	6	50 / 10	2,6 / 0,53
KRAS 95/12 SE							M12				2,6 / 0,54
KRAS 95/14 SE							M14				2,4 / 0,48
KRAS 95/16 SE							M16				2,42 / 0,49
KRAS 120/10 SE	120	95	23,0	56	80	30	M10	22	6	50 / 10	3 / 0,6
KRAS 120/12 SE							M12				3,1 / 0,62
KRAS 120/14 SE							M14				
KRAS 120/16 SE							M16				3 / 0,6
KRAS 150/10 SE	150	120	25,0	60	90	30	M10	25	6	50 / 10	4,1 / 0,82
KRAS 150/12 SE							M12				
KRAS 150/14 SE							M14				3,52 / 0,71
KRAS 150/16 SE							M16				3,56 / 0,72
KRAS 150/20 SE							M20			3,52 / 0,71	
KRAS 185/10 SE	185	150	28,5	60	91	30	M10	28	6	50 / 10	5,14 / 1,03
KRAS 185/12 SE							M12				5,3 / 1,06
KRAS 185/14 SE							M14				
KRAS 185/16 SE							M16				4,7 / 0,94
KRAS 185/20 SE							M20				
KRAS 240/10 SE	240	185	32,0	70	103	38	M10	32	8	50 / 10	7,4 / 1,48
KRAS 240/12 SE							M12				7,5 / 1,5
KRAS 240/14 SE							M14				6,6 / 1,32
KRAS 240/16 SE							M16				7,12 / 1,43
KRAS 240/20 SE							M20			6,6 / 1,32	
KRAS 300/10 SE	300	240	34,0	70	103	38	M10	34	8	25 / 10	4,05 / 1,62
KRAS 300/12 SE							M12				
KRAS 300/14 SE							M14				
KRAS 300/16 SE							M16				3,8 / 1,52
KRAS 300/20 SE							M20			4,05 / 1,62	

Lz/w - Number of crimping - narrow

Tubular terminals, longitudinally sealed with sector-shaped hole, KRASC...SE type

FEATURES & BENEFITS

- ring terminal, sealed, Al, crimped part as per DIN, with galvanic tin plating
- for sector-shaped conductors of SM Class II profile cables; does not require conductor rounding
- to be used in most demanding connections, in Mediterranean conditions

MECHANICAL DATA

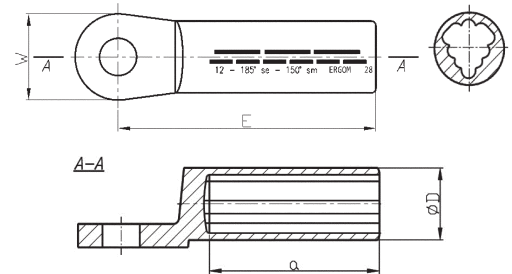
Material	Al
Covering	tin-plated

CRIMPING SHAPE

Number of crimping - wide	3
---------------------------	---

NOTE!

Terminals are filled with special contact grease, packed in a separate foil bag.
No grease - on request.



Type	Cross-section, se [mm ²]	Cross-section, sm [mm ²]	D	a	E	W	Screw hole	Socket code no.	Lz/w	Quantity in package [pcs]	Weight [kg]	
KRASC 50/8 SE	50	35	16,0	42	62	25	M8	16	5	100 / 10	2,64 / 0,27	
KRASC 50/10 SE							M10				2,6 / 0,26	
KRASC 50/12 SE							M12				2,4 / 0,24	
KRASC 50/14 SE							M14					
KRASC 70/8 SE	70	50	18,5	52	72	25	M8	18	6	100 / 10	3,15 / 0,32	
KRASC 70/10 SE							M10				3,63 / 0,37	
KRASC 70/12 SE							M12				3,2 / 0,32	
KRASC 70/14 SE							M14					
KRASC 95/10 SE	95	70	22,0	56	75	25	M10	22	6	50 / 10	2,6 / 0,53	
KRASC 95/12 SE							M12				2,5 / 0,54	
KRASC 95/14 SE							M14				2,4 / 0,48	
KRASC 95/16 SE							M16				2,4 / 0,49	
KRASC 120/10 SE	120	95	23,0	56	80	30	M10	22	6	50 / 10	3 / 0,6	
KRASC 120/12 SE							M12				3,1 / 0,62	
KRASC 120/14 SE							M14					
KRASC 120/16 SE							M16				3 / 0,6	
KRASC 150/10 SE	150	120	25,0	60	90	30	M10	25	6	50 / 10	4,1 / 0,82	
KRASC 150/12 SE							M12					
KRASC 150/14 SE							M14				3,52 / 0,71	
KRASC 150/16 SE							M16				3,56 / 0,72	
KRASC 150/20 SE							M20			3,52 / 0,71		
KRASC 185/10 SE	185	150	28,5	60	91	30	M10	28	6	50 / 10	5,14 / 1,03	
KRASC 185/12 SE							M12				5,3 / 1,06	
KRASC 185/14 SE							M14					
KRASC 185/16 SE							M16				4,7 / 0,94	
KRASC 185/20 SE							M20					
KRASC 240/10 SE	240	185	32,0	70	103	38	M10	32	6	50 / 10	7,4 / 1,48	
KRASC 240/12 SE							M12				7,5 / 1,5	
KRASC 240/14 SE							M14				6,6 / 1,32	
KRASC 240/16 SE							M16				7,12 / 1,43	
KRASC 240/20 SE							M20				6,6 / 1,32	
KRASC 300/10 SE							300				240	34,0
KRASC 300/12 SE	M12											
KRASC 300/14 SE	M14											
KRASC 300/16 SE	M16	10 / 25	1,52 / 3,8									
KRASC 300/20 SE	M20	25 / 10	4,05 / 1,62									

Lz/w - Number of crimping - narrow

Aluminium terminals, KDA type

FEATURES & BENEFITS

- ring terminal Al, crimped part as per DIN, without galvanic tin plating
- description of cable cross-section, terminal size and crimping die number on crimped part surface

MECHANICAL DATA

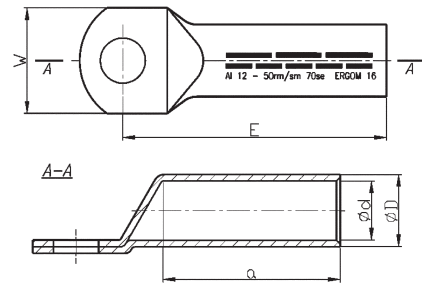
Material	Al
Covering	uncoated

CERTIFICATES & STANDARDS

Standards	EN 61238-1:2004
Design	DIN 46329 – concerns only the tubular part

NOTE!

- terminals are filled with special contact grease, packed in a separate foil bag;
- sector-shaped conductors must be rounded with special dies.



Type	Cross-section, re/se [mm²]	Cross-section, rm/sm [mm²]	d	D	a	E	W	Screw hole	Socket code no.	Lz/s	Lz/w	Quantity in package [pcs]	Weight [kg]
KDA 16/6	25	16	5,6	12,0	30	50	18	M6	12	2	4	100 / 10	1,55 / 0,16
KDA 16/8								M8					1,5 / 0,15
KDA 16/10								M10					1,6 / 0,16
KDA 25/6	35	25	6,8	12,0	30	57	19	M6	12	2	4	100 / 10	1,5 / 0,15
KDA 25/8								M8					1,6 / 0,16
KDA 25/10								M10					1,55 / 0,16
KDA 25/12								M12					2,3 / 0,23
KDA 35/6	50	35	8,0	14,0	42	68	22	M6	14	3	5	100 / 10	2,2 / 0,22
KDA 35/8								M8					2,4 / 0,24
KDA 35/10								M10					2,9 / 0,29
KDA 35/12								M12					3 / 0,3
KDA 35/14	70	50	9,8	16,0	42	71	26	M14	16	3	5	100 / 10	2,9 / 0,29
KDA 50/8								M8					3,8 / 0,38
KDA 50/10								M10					4,5 / 0,45
KDA 50/12								M12					4,3 / 0,43
KDA 50/14	95	70	11,2	18,5	52	79	28	M14	18	3	6	100 / 10	4,5 / 0,45
KDA 70/8								M8					3,6 / 0,72
KDA 70/10								M10					3,3 / 0,66
KDA 70/12								M12					3,7 / 0,74
KDA 70/14	120	95	13,2	22,0	56	82	34	M16	22	3	6	50 / 10	3,6 / 0,72
KDA 95/10								M10					3,3 / 0,66
KDA 95/12								M12					3,7 / 0,74
KDA 95/14								M14					3,6 / 0,72
KDA 95/16	150	120	14,7	23,0	56	90	33	M16	22	3	6	50 / 10	4,4 / 0,88
KDA 120/10								M10					4,75 / 0,95
KDA 120/12								M12					3,63 / 0,73
KDA 120/14								M14					4,55 / 0,91
KDA 120/16	185	150	16,3	25,0	60	94	37	M16	25	3	6	50 / 10	4,5 / 0,9
KDA 150/10								M10					4,62 / 0,93
KDA 150/12								M12					4,5 / 0,9
KDA 150/14								M14					4,62 / 0,93
KDA 150/16	107	41						M16					4,5 / 0,9
KDA 150/20								M20					4,65 / 0,93

Type	Cross-section, re/se [mm ²]	Cross-section, rm/sm [mm ²]	d	D	a	E	W	Screw hole	Socket code no.	Lz/s	Lz/w	Quantity in package [pcs]	Weight [kg]
KDA 185/12	240	185	18,3	28,5	60	99	41	M12	28	3	6	50 / 10	5,8 / 1,16
KDA 185/14						M14		6,2 / 1,24					
KDA 185/16						M16		6,3 / 1,26					
KDA 185/20						107	43	M20					6,4 / 1,28
KDA 240/12	300	240	21,0	32,0	70	111	47	M12	32	3	8	50 / 10	8 / 1,6
KDA 240/14						M14		8,2 / 1,64					
KDA 240/16						M16		7,3 / 1,46					
KDA 240/20						119	M20	8,6 / 1,72					
KDA 300/10	-	300	23,3	34,0	70	117	50	M12	34	3	8	25 / 10	4,5 / 1,8
KDA 300/12						M14							
KDA 300/14						M16							
KDA 300/16						120	M20	4,2 / 1,68					
KDA 300/20	125	M20											
KDA 400/14	-	400	26,0	38,5	100	165	60	M14	38	4	-	1	0,31
KDA 400/16								M16					0,28
KDA 400/20								M20					
KDA 500/14	-	500	29,0	44,0	120	185	63	M14	44	4	-	1	0,51
KDA 500/16								M16					
KDA 500/20								M20					

Lz/s - Number of crimping - wide Lz/w - Number of crimping - narrow

Aluminium terminals, KDAC type

FEATURES & BENEFITS

- ring terminal Al, crimped part as per DIN, with galvanic tin plating
- description of cable cross-section, terminal size and crimping die number on crimped part surface
- to be used in in Mediterranean conditions

MECHANICAL DATA

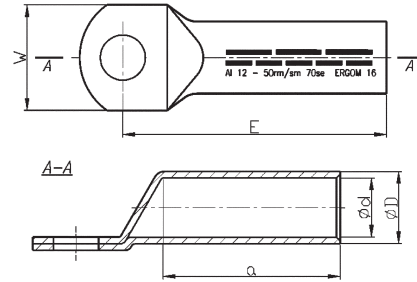
Material	Al
Covering	tin-plated

CERTIFICATES & STANDARDS

Standards	EN 61238-1:2004
Design	DIN 46329 – concerns only the tubular part

NOTE!

- terminals are filled with special contact grease, packed in a separate foil bag;
- sector-shaped conductors must be rounded with special dies.



Type	Cross-section, re/se [mm²]	Cross-section, rm/sm [mm²]	d	D	a	E	W	Screw hole	Socket code no.	Lz/s	Lz/w	Quantity in package [pcs]	Weight [kg]											
KDAC 16/6	25	16	5,6	12,0	30	50	18	M6	12	2	4	100 / 10	1,55 / 0,16											
KDAC 16/8								M8					1,5 / 0,15											
KDAC 16/10								M10					1,6 / 0,16											
KDAC 25/6	35	25	6,8	12,0	30	57	19	M6	12	2	4	100 / 10	1,5 / 0,15											
KDAC 25/8								M8					1,6 / 0,16											
KDAC 25/10								M10					1,55 / 0,16											
KDAC 25/12								M12					2,3 / 0,23											
KDAC 35/6	50	35	8,0	14,0	42	68	22	M6	14	3	5	100 / 10	2,2 / 0,22											
KDAC 35/8								M8					2,4 / 0,24											
KDAC 35/10								M10					2,9 / 0,29											
KDAC 35/12								M12					3 / 0,3											
KDAC 35/14								M14					2,9 / 0,29											
KDAC 50/8	70	50	9,8	16,0	42	69	23	M8	16	3	5	100 / 10	3,8 / 0,38											
KDAC 50/10								M10					4,5 / 0,45											
KDAC 50/12								M12					4,3 / 0,43											
KDAC 50/14								M14					3,6 / 0,72											
KDAC 70/8								95					70	11,2	18,5	52	79	28	M8	18	3	6	50 / 10	3,3 / 0,66
KDAC 70/10																			M10					3,7 / 0,74
KDAC 70/12	M12	3,6 / 0,72																						
KDAC 70/14	M14	4,4 / 0,88																						
KDAC 70/16	120	95	13,2	22,0	56	82	34	M16	22	3	6	50 / 10	4,75 / 0,95											
KDAC 95/10								M10					3,63 / 0,73											
KDAC 95/12								M12					4,55 / 0,91											
KDAC 95/14								M14					4,5 / 0,9											
KDAC 95/16								M16					4,62 / 0,93											
KDAC 120/10	150	120	14,7	23,0	56	90	33	M10	25	3	6	50 / 10	4,5 / 0,9											
KDAC 120/12								M12					4,65 / 0,93											
KDAC 120/14								M14					4,65 / 0,93											
KDAC 120/16								M16					4,65 / 0,93											
KDAC 150/10								185					150	16,3	25,0	60	99	37	M10	25	3	6	50 / 10	4,65 / 0,93
KDAC 150/12																			M12					4,65 / 0,93
KDAC 150/14	M14	4,65 / 0,93																						
KDAC 150/16	M16	4,65 / 0,93																						
KDAC 150/20						107	41	M20					4,65 / 0,93											

Type	Cross-section, re/se [mm ²]	Cross-section, rm/sm [mm ²]	d	D	a	E	W	Screw hole	Socket code no.	Lz/s	Lz/w	Quantity in package [pcs]	Weight [kg]
KDAC 185/12	240	185	18,3	28,5	60	99	41	M12	28	3	6	50 / 10	5,8 / 1,16
KDAC 185/14						M14		6,2 / 1,24					
KDAC 185/16						M16		6,3 / 1,26					
KDAC 185/20						M20		6,4 / 1,28					
KDAC 240/12	300	240	21,0	32,0	70	107	43	M20	32	3	8	50 / 10	8 / 1,6
KDAC 240/14						M14		8,2 / 1,64					
KDAC 240/16						M16		7,3 / 1,46					
KDAC 240/20						M20		8,6 / 1,72					
KDAC 300/12	-	300	23,3	34,0	70	111	45	M12	34	3	8	25 / 10	4,5 / 1,8
KDAC 300/14						M14							
KDAC 300/16						M16							
KDAC 300/20						M20							
KDAC 400/14	-	400	26,0	38,5	100	117	50	M12	38	4	-	25 / 1	7,8 / 0,32
KDAC 400/16						M14		1				0,32	
KDAC 400/20						M16						0,29	
KDAC 500/14						-		500				29,0	44,0
KDAC 500/16	M14												
KDAC 500/20	M16												
KDAC 500/20	M20												

Lz/s - Number of crimping - wide Lz/w - Number of crimping - narrow

Tubular terminals for 2 bolts KDA ... 2X type

FEATURES & BENEFITS

- two-ring terminal Al, crimped part as per DIN, without galvanic tin plating
- description of cable cross-section, terminal size and crimping die number on crimped part surface
- other designs on client's request

LOGISTIC DATA

Quantity in package [pcs] 1

MECHANICAL DATA

Material Al

Covering uncoated

DIMENSIONS

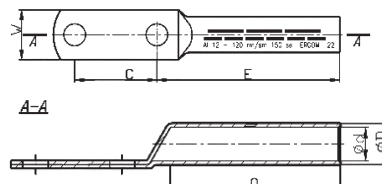
C 40

CERTIFICATES & STANDARDS

Design DIN 46329 – concerns only the tubular part

NOTE!

- terminals are filled with special contact grease, packed in a separate foil bag;
- sector-shaped conductors must be rounded with special dies.



Type	Cross-section, re/se [mm ²]	Cross-section, rm/sm [mm ²]	d	D	a	E	W	Screw hole	Socket code no.	Lz/s	Lz/w	Weight [kg]
KDA 120/2x12	150	120	14,7	23,0	56	94	33	M12	22	3	6	0,1
KDA 120/2x16								M16				
KDA 150/2x12	185	150	16,3	25,0	60	99	37	M12	25	3	6	0,15
KDA 150/2x16								M16				
KDA 185/2x12	240	185	18,3	28,5	60	111	41	M12	28	3	6	0,2
KDA 185/2x16								M16				
KDA 240/2x12	300	240	21,0	32,0	70	111	45	M12	32	3	8	0,25
KDA 240/2x16								M16				
KDA 300/2x12	-	300	23,3	34,0	70	117	50	M12	34	3	8	0,28
KDA 300/2x16								M16				
KDA 400/2x12	-	400	26,0	38,5	100	165	60	M12	38	4	-	0,63
KDA 400/2x16								M16				
KDA 500/2x12	-	500	29,0	44,0	120	185	63	M12	44	5	-	0,85
KDA 500/2*16								M16				

Lz/s - Number of crimping - wide Lz/w - Number of crimping - narrow

Aluminium thin-walled terminals, 2KAm type

FEATURES & BENEFITS

- thin-walled ring terminal Al
- design not recommended for new installations
- low-cost design, only for much less demanding applications
- does not contain grease ensuring gas-tight connection in crimped part - grease available separately

MECHANICAL DATA

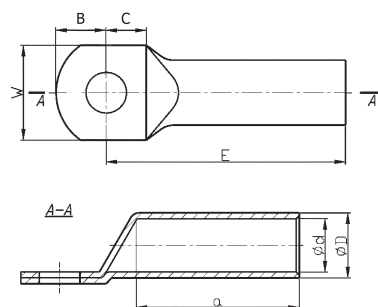
Material	Al
Covering	uncoated

CERTIFICATES & STANDARDS

Design	thin-walled
--------	-------------

NOTE!

Sector shaped conductors (sm) must be rounded with special dies.



Type	Cross-section, re/se [mm ²]	Cross-section, rm/sm [mm ²]	d	D	a	B	C	E	W	Screw hole	Socket code no.	Lz/s	Lz/w	Quantity in package [pcs]	Weight [kg]
2KAM 16/6	25	16	5,2	9,2	24	11	10	46	15,5	M6	10	2	4	100 / 10	0,66 / 0,07
2KAM 16/8						M8									
2KAM 16/10						M10									
2KAM 25/6	35	25	6,4	10,4	26	11	10	49	17,5	M6	11	2	4	100 / 10	0,82 / 0,09
2KAM 25/8						M8									
2KAM 25/10						M10									
2KAM 25/12	50	35	7,6	12,0	27	14	13	52	21,5	M12	12	2	4	100 / 10	0,82 / 0,09
2KAM 35/6						M6									
2KAM 35/8						M8									
2KAM 35/10	70	50	9,2	14,0	34	14	13	56	23,5	M10	14	2	5	100 / 10	1,1 / 0,11
2KAM 35/12						M12									
2KAM 35/14						M14									
2KAM 35/16	95	70	10,6	15,5	36	17	16	56	25,5	M16	16	3	5	100 / 10	1,24 / 0,13
2KAM 50/8						M8									
2KAM 50/10						M10									
2KAM 50/12	120	95	12,8	18,0	47	11	10	63	21,5	M8	18	3	5	50 / 10	1,65 / 0,17
2KAM 50/14						M14									
2KAM 50/16						M16									
2KAM 70/8	150	120	14,3	19,6	50	14	13	65	25,5	M10	19	3	6	50 / 10	1,7 / 0,17
2KAM 70/10						M12									
2KAM 70/12						M12									
2KAM 70/14	150	120	14,3	19,6	50	17	16	68	28,5	M14	19	3	6	50 / 10	1,54 / 0,31
2KAM 70/16						M16									
2KAM 95/8						M8									
2KAM 95/10	150	120	14,3	19,6	50	17	16	72	32,0	M16	19	3	6	50 / 10	1,5 / 0,15
2KAM 95/12						M12									
2KAM 95/14						M14									
2KAM 95/16	150	120	14,3	19,6	50	20	21	99	32,0	M20	19	3	6	50 / 10	2,1 / 0,21
2KAM 120/8						M8									
2KAM 120/10						M10									
2KAM 120/12	150	120	14,3	19,6	50	17	16	88	28,5	M12	19	3	6	50 / 10	2,1 / 0,21
2KAM 120/14						M14									
2KAM 120/16						M16									
2KAM 120/20	150	120	14,3	19,6	50	20	21	99	32,0	M20	19	3	6	50 / 10	2,2 / 0,22
2KAM 120/8						M8									
2KAM 120/10						M10									

Type	Cross-section, re/se [mm ²]	Cross-section, rm/sm [mm ²]	d	D	a	B	C	E	W	Screw hole	Socket code no.	Lz/s	Lz/w	Quantity in package [pcs]	Weight [kg]
2KAM 150/10	185	150	16,2	22,0	55	17	16	99	32,0	M10	21	3	6	50 / 10	2,6 / 0,52
2KAM 150/12										M12					2,9 / 0,58
2KAM 150/14										M14					2,7 / 0,54
2KAM 150/16										M16					2,95 / 0,59
2KAM 150/20										M20					3,3 / 0,66
2KAM 185/10	240	185	17,8	24,0	60	20	21	109	34,5	M10	23	3	6	50 / 10	3,75 / 0,67
2KAM 185/12										M12					3,55 / 0,71
2KAM 185/14										M14					3,45 / 0,69
2KAM 185/16										M16					3,25 / 0,65
2KAM 185/20										M20					5,3 / 1,06
2KAM 240/10	300	240	20,2	28,2	64	20	21	115	40,0	M10	28	3	8	50 / 10	5 / 1
2KAM 240/12										M12					5,2 / 1,04
2KAM 240/14										M14					
2KAM 240/16										M16					
2KAM 240/20										M20					

Lz/s - Number of crimping - wide Lz/w - Number of crimping - narrow

Tubular thin-walled connectors, 2ZA type

FEATURES & BENEFITS

- thin-walled connector Al, to make "butt splice" cable connections
- design not recommended for new installations
- low-cost design, only for much less demanding applications
- does not contain grease ensuring gas-tight connection in crimped part - grease available separately

MECHANICAL DATA

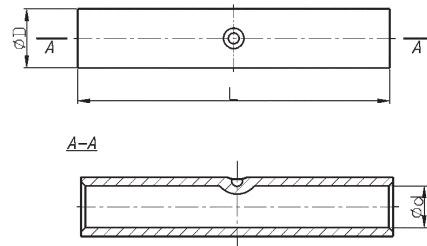
Material	Al
Covering	uncoated

CERTIFICATES & STANDARDS

Design	thin-walled
--------	-------------

NOTE!

- sector-shaped conductors must be rounded with special dies.



Type	Cross-section, re/se [mm ²]	Cross-section, rm/sm [mm ²]	d	D	L	Socket code no.	Lz/s	Lz/w	Quantity in package [pcs]	Weight [kg]
2ZA 16	25	16	5,2	9,2	47	10	1-1	3-3	100 / 10	0,6 / 0,06
2ZA 25	35	25	6,4	10,4	57	11	2-2	4-4	100 / 10	0,8 / 0,08
2ZA 35	50	35	7,6	12,0	63	12	2-2	4-4	100 / 10	1,4 / 0,14
2ZA 50	70	50	9,2	14,0	76	14	2-2	4-4	100 / 10	1,8 / 0,18
2ZA 70	95	70	10,6	15,6	84	16	2-2	5-5	100 / 10	2,3 / 0,23
2ZA 95	120	95	12,8	18,0	96	18	2-2	5-5	50 / 10	1,6 / 0,32
2ZA 120	150	120	14,3	19,7	110	19	2-2	6-6	50 / 10	2,1 / 0,42
2ZA 150	185	150	16,2	22,0	118	21	2-2	6-6	50 / 10	2,9 / 0,58
2ZA 185	240	185	17,8	24,0	126	23	2-2	6-6	50 / 10	3,5 / 0,7
2ZA 240	300	240	20,2	28,2	136	28	2-2	6-6	50 / 10	5,6 / 1,12

Lz/s - Number of crimping - wide Lz/w - Number of crimping - narrow

Compression connectors, LA ... type

FEATURES & BENEFITS

- connector Al, crimped part as per DIN, without galvanic tin plating, to make "butt splice" cable connections
- description of cable cross-section, crimping die number on crimped part surface
- central stamping guarantees correct length of conductor insertion
- cable cross-section change impossible

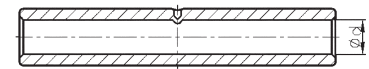
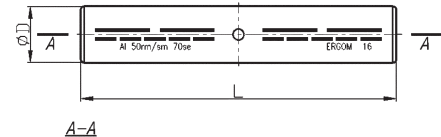


MECHANICAL DATA

Material	Al
Covering	uncoated

CERTIFICATES & STANDARDS

Standards	EN 61238-1
Design	DIN 46267/2 - concerns only the tubular part



NOTE!

- LA terminals are filled with special contact grease, packed in a separate foil bag;
- sector-shaped conductors must be rounded with special dies.

LA...BS - without contact grease;

Type	Cross-section, re/se [mm ²]	Cross-section, rm/sm [mm ²]	d	D	L	Grease	Socket code no.	Lz/s	Lz/w	Quantity in package [pcs]	Weight [kg]
LA 10	16	10	5,0	10,0	55	contact grease	10	1-1	3-3	100 / 10	1,06 / 0,11
LA 16	25	16	5,6	12,0	55	contact grease	12	1-1	3-3	100 / 10	1,5 / 0,15
LA 25	35	25	6,8	12,0	70	contact grease	12	2-2	4-4	100 / 10	1,63 / 0,17
LA 35	50	35	8,0	14,0	85	contact grease	14	2-2	5-5	100 / 10	2,63 / 0,27
LA 50	70	50	9,8	16,0	85	contact grease	16	2-2	5-5	100 / 10	3,35 / 0,34
LA 70	95	70	11,2	18,5	105	contact grease	18	3-3	6-6	100 / 10	5,2 / 0,52
LA 95	120	95	13,2	22,0	105	contact grease	22	3-3	6-6	50 / 10	3,7 / 0,74
LA 120	150	120	14,7	23,0	105	contact grease	22	3-3	6-6	50 / 10	3,9 / 0,78
LA 150	185	150	16,3	25,0	125	contact grease	25	3-3	7-7	50 / 10	4,75 / 0,95
LA 185	240	185	18,3	28,5	125	contact grease	28	3-3	7-7	50 / 10	7,9 / 1,58
LA 240	300	240	21,0	32,0	145	contact grease	32	3-3	8-8	50 / 10	9,3 / 1,86
LA 300	-	300	23,3	34,0	145	contact grease	34	3-3	-	25 / 10	5 / 2
LA 400	-	400	26,0	38,5	210	contact grease	38	4-4	-	25 / 1	9,3 / 0,38
LA 500	-	500	29,0	44,0	210	contact grease	44	4-4	-	25 / 1	12,5 / 0,5
LA 10 BS	16	10	5,0	10,0	55	without contact grease	10	1-1	3-3	100 / 10	1,06 / 0,11
LA 16 BS	25	16	5,6	12,0	55	without contact grease	12	1-1	3-3	100 / 10	1,5 / 0,15
LA 25 BS	35	25	6,8	12,0	70	without contact grease	12	2-2	4-4	100 / 10	1,63 / 0,17
LA 35 BS	50	35	8,0	14,0	85	without contact grease	14	2-2	5-5	100 / 10	2,63 / 0,27
LA 50 BS	70	50	9,8	16,0	85	without contact grease	16	2-2	5-5	100 / 10	3,35 / 0,34
LA 70 BS	95	70	11,2	18,5	105	without contact grease	18	3-3	6-6	100 / 10	5,2 / 0,52
LA 95 BS	120	95	13,2	22,0	105	without contact grease	22	3-3	6-6	50 / 10	3,7 / 0,74
LA 120 BS	150	120	14,7	23,0	105	without contact grease	22	3-3	6-6	50 / 10	3,9 / 0,78
LA 150 BS	185	150	16,3	25,0	125	without contact grease	25	3-3	7-7	50 / 10	4,75 / 0,95
LA 185 BS	240	185	18,3	28,5	125	without contact grease	28	3-3	7-7	50 / 10	7,9 / 1,58
LA 240 BS	300	240	21,0	32,0	145	without contact grease	32	3-3	8-8	50 / 10	9,3 / 1,86
LA 300 BS	-	300	23,3	34,0	145	without contact grease	34	3-3	-	25 / 10	5 / 2
LA 400 BS	-	400	26,0	38,5	210	without contact grease	38	4-4	-	25 / 1	9,3 / 0,37
LA 500 BS	-	500	29,0	44,0	210	without contact grease	44	4-4	-	25 / 1	12,5 / 0,5

Lz/s - Number of crimping - wide Lz/w - Number of crimping - narrow

Compression connectors, LA .../... type

FEATURES & BENEFITS

- connector Al, crimped part as per DIN, without galvanic tin plating, to make "butt splice" cable connections
- description of cable cross-section, crimping die number on crimped part surface
- wide range of solutions facilitating connection of cables of various diameters

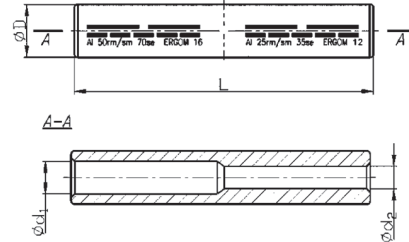
MECHANICAL DATA

Material	Al
Covering	uncoated

NOTE!

- terminals are filled with special contact grease, packed in a separate foil bag;
- sector-shaped conductors must be rounded with special dies.

Tin version on request



Type	Cross-section, d ₁ rm/sm [mm ²]	Cross-section, d ₁ re/se [mm ²]	Cross-section, d ₂ rm/sm [mm ²]	Cross-section, d ₂ re/se [mm ²]	D	L	d ₁	d ₂	Socket code no.	Lz/s	Lz/w	Quantity in package [pcs]	Weight [kg]
LA 25/16	25	35	16	25	12,0	75	6,8	5,4	12	2-2	4-4	10	0,19
LA 35/16	35	50	16	25	14,0	90	8,0	5,4	14	2-2	5-5	10	0,31
LA 35/25			25	35				6,8					
LA 50/25	50	70	25	35	16,0	90	9,8	6,8	16	2-2	5-5	10	0,38
LA 50/35			35	50				8,0					
LA 70/25	70	95	25	35	18,5	110	11,2	6,8	18	3-3	6-6	10	0,68
LA 70/35			35	50				8,0					
LA 70/50			50	70				9,8					
LA 95/35	95	120	35	50	22,0	110	13,2	8,0	22	3-3	6-6	10	0,66
LA 95/50			50	70				9,8					
LA 95/70			70	95				11,2					
LA 120/25	120	150	25	35	23,0	110	14,7	6,8	22	3-3	6-6	10	1,2
LA 120/35			35	50				8,0					
LA 120/50			50	70				9,8					
LA 120/70			70	95				11,2					
LA 120/95	120	150	95	120	23,0	110	14,7	13,2	22	3-3	6-6	10	0,88
LA 150/35			35	50				8,0					
LA 150/50			50	70				9,8					
LA 150/70			70	95				11,2					
LA 150/95	150	185	95	120	25,0	130	16,3	13,2	25	3-3	6-6	10	1,36
LA 150/120			120	150				14,7					
LA 185/120			120	150				14,7					
LA 185/150	185	240	120	150	28,5	130	18,3	14,7	28	3-3	7-7	10	1,8
LA 185/150			150	185				16,3					
LA 240/120	240	300	180	150	32,0	150	21,0	14,7	32	3-3	8-8	10	2,51
LA 240/150			150	185				16,3					
LA 240/185			185	240				18,3					
LA 300/185	300	-	185	240	34,0	150	23,3	18,3	34	3-3	8-8	1	0,26
LA 300/240			240	300				21,0					

Lz/s - Number of crimping - wide Lz/w - Number of crimping - narrow

Compression connectors with barrier, LAP ... type

FEATURES & BENEFITS

- tight connector Al, crimped part as per DIN, without galvanic tin plating, to make "butt splice" cable connections
- description of cable cross-section, crimping die number on crimped part surface
- cable cross-section change impossible

MECHANICAL DATA

Material	Al
Covering	uncoated

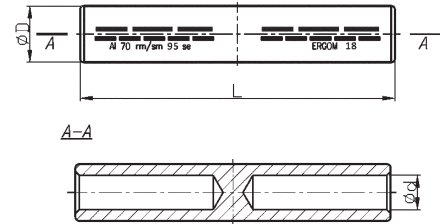
CERTIFICATES & STANDARDS

Standards	EN 61238-1
Design	DIN 46267/2 - concerns only the tubular part

NOTE!

- terminals are filled with special contact grease, packed in a separate foil bag;
- sector-shaped conductors must be rounded with special dies.

Tin version on request



Type	Cross-section, re/se [mm ²]	Cross-section, rm/sm [mm ²]	d	D	L	Socket code no.	Lz/s	Lz/w	Quantity in package [pcs]	Weight [kg]
LAP 16	25	16	5,6	12,0	75	12	2-2	4-4	10	0,2
LAP 25	35	25	6,8	12,0	75	12	2-2	4-4	10	0,02
LAP 35	50	35	8,0	14,0	90	14	2-2	5-5	10	0,03
LAP 50	70	50	9,8	16,0	90	16	2-2	5-5	10	0,04
LAP 70	95	70	11,2	18,5	110	18	3-3	6-6	10	0,06
LAP 95	120	95	13,2	22,0	120	22	3-3	6-6	10	0,09
LAP 120	150	120	14,7	23,0	120	22	3-3	6-6	10	0,09
LAP 150	185	150	16,3	25,0	130	25	3-3	6-6	10	0,11
LAP 185	240	185	18,3	28,5	130	28	3-3	6-6	10	0,16
LAP 240	300	240	21,0	32,0	150	32	3-3	8-8	10	2,1
LAP 300	-	300	23,3	34,0	155	34	4-4	8-8	1	0,27

Lz/s - Number of crimping - wide Lz/w - Number of crimping - narrow

Compression connectors with barrier, LAP .../... type

FEATURES & BENEFITS

- tight connector Al, crimped part as per DIN, without galvanic tin plating, to make "butt splice" cable connections
- description of cable cross-section, crimping die number on crimped part surface
- cable cross-section change impossible

LOGISTIC DATA

Quantity in package [pcs] 10

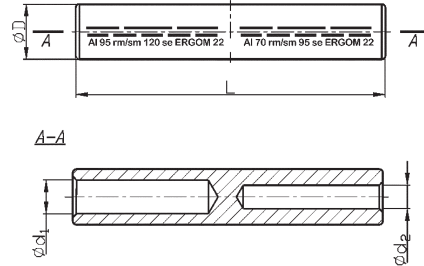
MECHANICAL DATA

Material Al
Covering uncoated

NOTE!

- terminals are filled with special contact grease, packed in a separate foil bag;
- sector-shaped conductors must be rounded with special dies.
- larger recommended number of crimps always refers to a larger ID of the connector.

Tin version on request.



Type	Cross-section, d ₁ rm/sm [mm ²]	Cross-section, d ₁ re/se [mm ²]	Cross-section, d ₂ rm/sm [mm ²]	Cross-section, d ₂ re/se [mm ²]	D	L	d ₁	d ₂	Socket code no.	Lz/s	Lz/w	Weight [kg]		
LAP 16/10	16	25	10	16	12,0	75	5,6	4,5	12	2-1	4-2	0,2		
LAP 25/10	25	16	16	25			6,8	5,6						
LAP 25/16			25	16			6,8	5,6						
LAP 35/16	35	50	16	25	14,0	90	8,0	5,6	14	2-2	5-4	0,3		
LAP 35/25			25	35			6,8	6,8						
LAP 50/25	50	70	25	35	16,0	90	9,8	6,8	16	2-2	5-4	0,4		
LAP 50/35			35	50			8,0	8,0						
LAP 70/25			25	35			6,8	6,8						
LAP 70/35	70	95	35	50	18,5	110	11,2	8,0	18	3-2	6-4	0,6		
LAP 70/50			50	70			9,8	6-5			0,6			
LAP 95/35			35	50			8,0	6-5			0,9			
LAP 95/50	95	120	50	70	22,0	120	13,2	9,8	22	3-2	6-5	0,9		
LAP 95/70			70	95			11,2	3-3					6-6	0,8
LAP 120/35	120	150	35	50	23,0	120	14,7	8,0	22	3-2	6-5	0,95		
LAP 120/50			50	70				9,8				1		
LAP 120/70			70	95				11,2				3-3	6-6	0,9
LAP 120/95			95	120				13,2						
LAP 150/35	150	185	35	50	25,0	130	16,3	8,0	25	3-2	6-5	1,4		
LAP 150/50			50	70				9,8				1,3		
LAP 150/70			70	95				11,2				3-3	6-6	0,13
LAP 150/95			95	120				13,2						
LAP 150/120			120	150				14,7						
LAP 185/50	185	240	50	70	28,5	130	18,3	9,8	28	3-3	6-5	1,8		
LAP 185/70			70	95				11,2				6-6	1,7	
LAP 185/95			95	120				13,2						
LAP 185/120			120	150				14,7				6-3	1,55	
LAP 185/150			150	185				16,3						
LAP 240/95	240	300	95	120	32,0	150	21,0	13,2	32	3-3	8-6	2,2		
LAP 240/120			120	150				14,7				2,15		
LAP 240/150			150	185				16,3				2,1		
LAP 240/185			185	240				18,3				1,95		

Lz/s - Number of crimping - wide Lz/w - Number of crimping - narrow

Compression connectors with barrier, LAWP ... type

FEATURES & BENEFITS

- tight connector Al, without galvanic tin plating, to make "butt splice" cable connections
- description of cable cross-section, crimping die number on crimped part surface
- for operation with MV equipment; connector shape ensures more even electromagnetic field distribution
- cable cross-section change impossible

LOGISTIC DATA

Quantity in package [pcs] 10

MECHANICAL DATA

Material Al
Covering uncoated

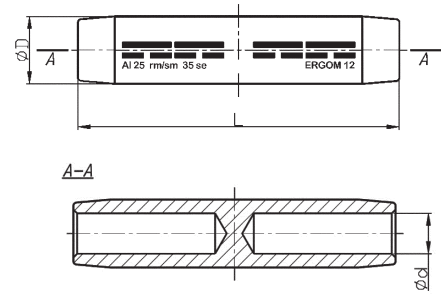
ELECTRICAL DATA

Voltage [kV] 1 ÷ 36

NOTE!

- terminals are filled with special contact grease, packed in a separate foil bag;
- sector-shaped conductors must be rounded with special dies.

Tin version on request



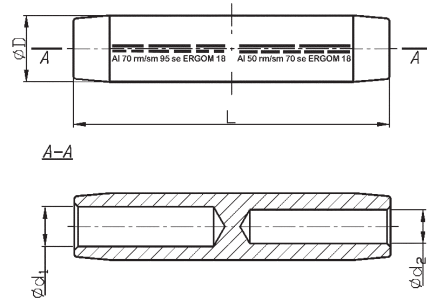
Type	Cross-section, re/se [mm ²]	Cross-section, rm/sm [mm ²]	d	D	L	Socket code no.	Lz/s	Lz/w	Weight [kg]
LAWP 16	25	16	5,6	12	85	12	2-2	4-4	0,2
LAWP 25	35	25	6,8	12,0	85	12	2-2	4-4	0,2
LAWP 35	50	35	8,0	14,0	100	14	2-2	5-5	0,3
LAWP 50	70	50	9,8	16,0	100	16	2-2	5-5	0,35
LAWP 70	95	70	11,2	18,5	120	18	3-3	6-6	0,56
LAWP 95	120	95	13,2	22,0	136	22	3-3	6-6	0,9
LAWP 120	150	120	14,7	23,0	136	22	3-3	6-6	0,8
LAWP 150	185	150	16,3	25,0	150	25	3-3	6-6	1,1
LAWP 185	240	185	18,3	28,5	150	28	3-3	6-6	1,5
LAWP 240	300	240	21,0	32,0	170	32	3-3	8-8	2,1

Lz/s - Number of crimping - wide Lz/w - Number of crimping - narrow

Compression connectors with barrier, LAWP .../... type

FEATURES & BENEFITS

- tight connector Al, without galvanic tin plating, to make "butt splice" cable connections
- description of cable cross-section, crimping die number on crimped part surface
- for operation with MV equipment; connector shape ensures more even electromagnetic field distribution
- wide range of solutions facilitating connection of cables of various diameters



LOGISTIC DATA

Quantity in package [pcs]	10
---------------------------	----

MECHANICAL DATA

Material	Al
Covering	uncoated

ELECTRICAL DATA

Voltage [kV]	1 ÷ 36
--------------	--------

NOTE!

- terminals are filled with special contact grease, packed in a separate foil bag;
- sector-shaped conductors must be rounded with special dies.
- larger recommended number of crimps always refers to a larger ID of the connector.

Tin version on request.

Type	Cross-section, d ₁ mm/sm [mm ²]	Cross-section, d ₁ re/se [mm ²]	Cross-section, d ₂ mm/sm [mm ²]	Cross-section, d ₂ re/se [mm ²]	D	L	d ₁	d ₂	Socket code no.	Lz/s	Lz/w	Weight [kg]	
LAWP 35/25	35	50	25	35	14,0	100	8,0	6,8	14	2-2	5-4	0,3	
LAWP 50/25	50	70	25	35	16,0	100	9,8	6,8	16	2-2	5-4	0,4	
LAWP 50/35			35	50				8,0			5-5		
LAWP 70/35	70	95	35	50	18,5	120	11,2	8,0	18	3-2	6-5	0,6	
LAWP 70/50			50	70				9,8			0,65		
LAWP 95/50	95	120	50	70	22,0	136	13,2	9,8	22	3-2	6-5	0,9	
LAWP 95/70			70	95				11,2		3-3	0,85		
LAWP 120/25	120	150	25	35	23,0	136	14,7	6,8	22	3-2	6-4	1,2	
LAWP 120/35			35	50				8,0			1		
LAWP 120/50			50	70				9,8			6-5	1,1	
LAWP 120/70			70	95				11,2			1		
LAWP 120/95			95	120				13,2			3-3	6-6	1,4
LAWP 150/25	150	185	25	35	25,0	150	16,3	6,8	25	3-2	6-4	1,4	
LAWP 150/35			35	50				8,0			6-5	1,3	
LAWP 150/50			50	70				9,8			1,3		
LAWP 150/70			70	95				11,2			3-3	6-6	1,35
LAWP 150/95			95	120				13,2					
LAWP 150/120	120	150	14,7	6-6	1,2								

Type	Cross-section, d ₁ rm/sm [mm ²]	Cross-section, d ₁ re/se [mm ²]	Cross-section, d ₂ rm/sm [mm ²]	Cross-section, d ₂ re/se [mm ²]	D	L	d ₁	d ₂	Socket code no.	Lz/s	Lz/w	Weight [kg]	
LAWP 185/25	185	240	25	35	28,5	150	18,3	6,8	28	3-2	6-4	1,8	
LAWP 185/35			35	50				8,0			6-5		
LAWP 185/50			50	70				9,8			3-3		6-6
LAWP 185/70			70	95				11,2					
LAWP 185/95			95	120				13,2					
LAWP 185/120			120	150				14,7					
LAWP 185/150			150	185				16,3			32		3-2
LAWP 240/25	240	300	25	35	32,0	170	21,0	6,8					
LAWP 240/35			35	50				8,0	8-5				
LAWP 240/50			50	70				9,8	3-3	8-6			
LAWP 240/70			70	95				11,2					
LAWP 240/95			95	120				13,2					
LAWP 240/120			120	150				14,7					
LAWP 240/150			150	185				16,3	3-3	8-6	2,5		
LAWP 240/185	185	240	18,3										

Lz/s - Number of crimping - wide Lz/w - Number of crimping - narrow

Compression connectors, LAW ... type

FEATURES & BENEFITS

- connector Al, without galvanic tin plating, to make "butt splice" cable connections
- description of cable cross-section, crimping die number on crimped part surface
- for operation with MV equipment; connector shape ensures more even electromagnetic field distribution
- cable cross-section change impossible

MECHANICAL DATA

Material	Al
Covering	uncoated

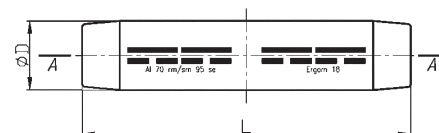
ELECTRICAL DATA

Voltage [kV]	1 ÷ 36
--------------	--------

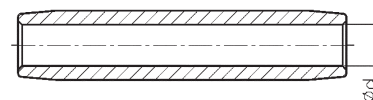
NOTE!

- terminals are filled with special contact grease, packed in a separate foil bag;
- sector-shaped conductors must be rounded with special dies.

Tin version on request



A-A



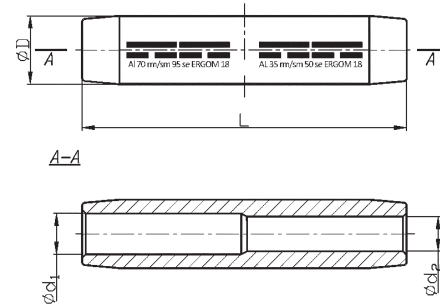
Type	Cross-section, re/ se [mm ²]	Cross-section, rm/ sm [mm ²]	d	D	L	Socket code no.	Lz/s	Lz/w	Quantity in package [pcs]	Weight [kg]
LAW 16	25	16	5,6	12,0	90	12	2-2	4-4	10	0,1
LAW 25	35	25	6,8	12,0	90	12	2-2	4-4	10	0,2
LAW 35	50	35	8,0	14,0	90	14	2-2	4-4	10	0,3
LAW 50	70	50	9,8	16,0	90	16	2-2	4-4	10	0,35
LAW 70	95	70	11,2	18,5	95	18	2-2	4-4	10	0,47
LAW 95	120	95	13,2	22,5	100	22	2-2	4-4	10	0,72
LAW 120	150	120	14,7	23,0	105	22	2-2	4-4	10	0,75
LAW 150	185	150	16,3	25,0	105	25	2-2	4-4	10	0,9
LAW 185	240	185	18,3	28,5	125	28	2-2	5-5	10	1,4
LAW 240	300	240	21,0	32,0	125	32	2-2	5-5	10	1,6
LAW 300	-	300	23,3	34,0	125	34	2-2	5-5	10	1,9
LAW 400	-	400	26,0	38,5	150	38	3-3	-	1	0,26
LAW 500	-	500	29,0	44,0	170	44	3-3	-	1	0,4

Lz/s - Number of crimping - wide Lz/w - Number of crimping - narrow

Compression connectors, LAW .../... type

FEATURES & BENEFITS

- connector Al, without galvanic tin plating, to make "butt splice" cable connections
- description of cable cross-section, crimping die number on crimped part surface
- for operation with MV equipment; connector shape ensures more even electromagnetic field distribution
- wide range of solutions facilitating connection of cables of various diameters



MECHANICAL DATA

Material	Al
Covering	uncoated

ELECTRICAL DATA

Voltage [kV]	1 ÷ 36
--------------	--------

NOTE!

- terminals are filled with special contact grease, packed in a separate foil bag;
- sector-shaped conductors must be rounded with special dies.
- larger recommended number of crimps always refers to a larger ID of the connector.

Tin version on request.

Type	Cross-section, d_1 mm/sm [mm ²]	Cross-section, d_1 re/se [mm ²]	Cross-section, d_2 mm/sm [mm ²]	Cross-section, d_2 re/se [mm ²]	D	L	d_1	d_2	Socket code no.	Lz/s	Lz/w	Quantity in package [pcs]	Weight [kg]	
LAW 35/25	35	50	25	35	14,0	90	8,0	6,8	14	2-2	4-4	10	0,55	
LAW 50/25	50	70	25	35	16,0	90	9,8	6,8	16	2-2	4-4	10	0,55	
LAW 50/35			35	50				8,0						0,05
LAW 70/35	70	95	35	50	18,5	95	11,2	8,0	18	2-2	4-4	10	0,65	
LAW 70/50			50	70				9,8						0,7
LAW 95/50	95	120	50	70	22,5	100	13,2	9,8	22	2-2	4-4	10	1,15	
LAW 95/70			70	95				11,2						1,1
LAW 120/50	120	150	50	70	23,0	105	14,7	9,8	22	2-2	4-4	10	1,35	
LAW 120/70			70	95				11,2						1,3
LAW 120/95			95	120				13,2						1,25
LAW 150/95	150	185	95	120	25,0	105	16,3	13,2	25	2-2	4-4	10	1,45	
LAW 150/120			120	150				14,7						1,4
LAW 185/120	185	240	120	150	28,5	125	18,3	14,7	28	2-2	5-4	10	1,75	
LAW 185/150			150	185				16,3						1,7
LAW 240/150	240	300	150	185	32,0	125	21,0	16,3	32	2-2	5-4	10	2,25	
LAW 240/185			185	240				18,3						2,2
LAW 300/185	300	-	185	240	34,0	125	23,4	18,3	34	2-2	5-5	1	0,36	
LAW 300/240			240	300				21,0						0,35
LAW 400/240	400	-	240	300	38,5	150	26,0	21,0	38	3-3	-	1	0,36	
LAW 400/300			300	-				23,6						0,37

Lz/s - Number of crimping - wide Lz/w - Number of crimping - narrow

Aluminium pins for cables with flexible insulation, acc. to VDE 0295, BAK type

FEATURES & BENEFITS

- Al pin, without galvanic plating
- description of cable cross-section, crimping die number on crimped part surface
- facilitates disconnection after loosening screws in terminal

LOGISTIC DATA

Quantity in package [pcs] 1

MECHANICAL DATA

Material Al

Covering uncoated

DIMENSIONS

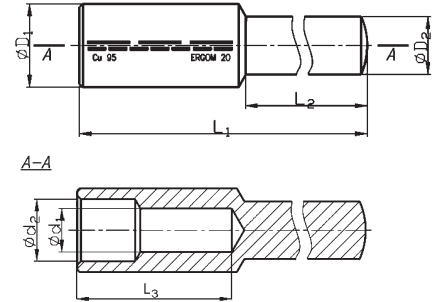
L₂ 65

NOTE!

- terminals are filled with special contact grease, packed in a separate foil bag;
- sector-shaped conductors must be rounded.

Dimension d₂ - cable diameter with insulation must be provided when ordering.

Tin version on request.



Type	Cross-section, re/se [mm ²]	Cross-section, rm/sm [mm ²]	L ₁	L ₃	d ₁	D ₁	D ₂	Socket code no.	Lz/s	Lz/w	Weight [kg]
BAK 35	50	35	140	43	8,3	18,5	8,0	18	3	7	0,06
BAK 50	70	50	140	43	10,0	20,5	10,0	20	3	7	0,07
BAK 70	95	70	140	53	11,5	22,5	10,0	22	3	8	0,08
BAK 95	120	95	143	57	13,5	22,5	11,0	22	3	8	0,08
BAK 120	150	120	148	57	14,8	23,0	12,0	22	4	9	0,09
BAK 150	185	150	153	61	16,5	25,5	14,0	25	4	9	0,11

Lz/s - Number of crimping - wide Lz/w - Number of crimping - narrow