

STD56L(F)/56EL(F)/80L(F)/80EL(F)

OPERATING MANUAL

LED Tower Light with Horn

Thank you for purchasing QLight product. Please read this manual carefully before installing this product for safe and long use.

1 Product Features

- This product built-in signal sound with high brightness LED warning light can transmit both visual signal and auditory signal at the same time.
- Using our original LED light distribution system, this product emits widely light of the signal.
- Lens standard color arrangement
 - 1 layer : RED-R
 - 2 layers : RED-R, GREEN-G
 - 3 layers : RED-R, AMBER-A, GREEN-G
 - 4 layers : RED-R, AMBER-A, GREEN-G, BLUE-B
 - 5 layers : RED-R, AMBER-A, GREEN-G, BLUE-B, WHITE-W
- Material: Lens-AS, Body-ABS, Reflector: Heat resistance ABS
- Volume: Max. 105dB/1m
- Flashes(Flashing Type): 60-80/Min.
- Protection Class: IP54

2 Specification

• Specification for STD56L/ STD56LF

Model	Layer	Voltage	Current	Weight	Flashes	Color
STD56L LED Steady	1	DC12V	0.365A	0.99Kg	60~80 /min.	Red-R
		DC24V	0.314A	0.99Kg		
		AC110V	0.118A	1.38Kg		
		AC220V	0.059A	1.38Kg		
	2	DC12V	0.476A	1.23Kg		Red-R Green-G
		DC24V	0.410A	1.23Kg		
		AC110V	0.134A	1.62Kg		
		AC220V	0.067A	1.62Kg		
	3	DC12V	0.588A	1.47Kg		Red-R Amber-A Green-G
		DC24V	0.545A	1.47Kg		
		AC110V	0.149A	1.86Kg		
		AC220V	0.074A	1.86Kg		
STD56LF LED Steady/Flashing	4	DC12V	0.700A	1.71Kg		Red-R Amber-A Green-G Blue-B
		DC24V	0.506A	1.71Kg		
		AC110V	0.165A	2.10Kg		
		AC220V	0.082A	2.10Kg		
	5	DC12V	0.812A	1.95Kg		Red-R Amber-A Green-G Blue-B White-W
		DC24V	0.602A	1.95Kg		
		AC110V	0.181A	2.34Kg		
		AC220V	0.090A	2.34Kg		

• Specification for STD56EL/ STD56ELF

Model	Layer	Voltage	Current	Weight	Flashes	Color
STD56EL LED Steady	1	DC12V	0.332A	0.90Kg	60~80 /min.	Red-R
		DC24V	0.292A	0.90Kg		
		AC110V	0.113A	1.38Kg		
		AC220V	0.056A	1.38Kg		
	2	DC12V	0.443A	1.23Kg		Red-R Green-G
		DC24V	0.388A	1.23Kg		
		AC110V	0.129A	1.62Kg		
		AC220V	0.064A	1.62Kg		
STD56ELF LED Steady/Flashing	3	DC12V	0.555A	1.47Kg		Red-R Amber-A Green-G
		DC24V	0.523A	1.47Kg		
		AC110V	0.144A	1.86Kg		
		AC220V	0.071A	1.86Kg		
	4	DC12V	0.677A	1.71Kg		Red-R Amber-A Green-G Blue-B
		DC24V	0.484A	1.71Kg		
		AC110V	0.160A	2.10Kg		
		AC220V	0.079A	2.10Kg		
	5	DC12V	0.779A	1.95Kg		Red-R Amber-A Green-G Blue-B White-W
		DC24V	0.580A	1.95Kg		
		AC110V	0.176A	2.34Kg		
		AC220V	0.087A	2.34Kg		

• Specification for STD56L/ STD56LF

Model	Layer	Voltage	Current	Weight	Flashes	Color
STD80L LED Steady	1	DC12V	0.377A	0.99Kg	60~80 /min.	Red-R
		DC24V	0.326A	0.99Kg		
		AC110V	0.124A	1.38Kg		
		AC220V	0.062A	1.38Kg		
	2	DC12V	0.488A	1.23Kg		Red-R Green-G
		DC24V	0.422A	1.23Kg		
		AC110V	0.140A	1.62Kg		
		AC220V	0.070A	1.62Kg		
STD80LF LED Steady/Flashing	3	DC12V	0.600A	1.47Kg		Red-R Amber-A Green-G
		DC24V	0.557A	1.47Kg		
		AC110V	0.155A	1.86Kg		
		AC220V	0.077A	1.86Kg		
	4	DC12V	0.712A	1.71Kg		Red-R Amber-A Green-G Blue-B
		DC24V	0.518A	1.71Kg		
		AC110V	0.171A	2.10Kg		
		AC220V	0.085A	2.10Kg		
	5	DC12V	0.824A	1.95Kg		Red-R Amber-A Green-G Blue-B White-W
		DC24V	0.614A	1.95Kg		
		AC110V	0.187A	2.34Kg		
		AC220V	0.093	2.34Kg		

• Specification for STD80EL/ STD80ELF

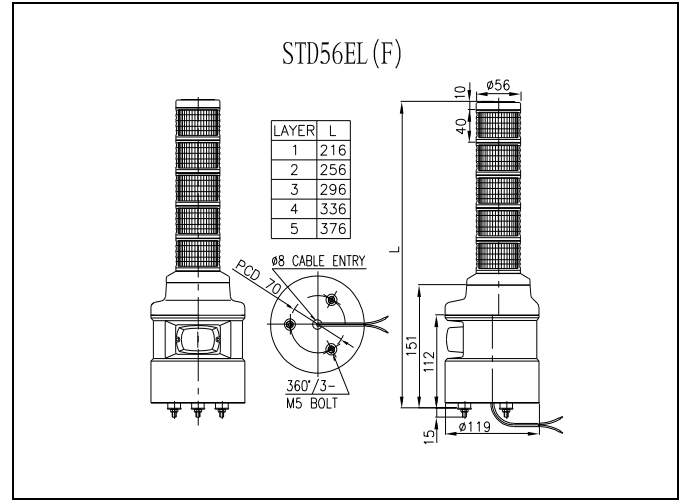
Model	Layer	Voltage	Current	Weight	Flashes	Color
STD80EL LED Steady	1	DC12V	0.337A	0.97Kg	60~80 /min.	Red-R
		DC24V	0.303A	0.97Kg		
		AC110V	0.116A	1.36Kg		
		AC220V	0.058A	1.36Kg		
	2	DC12V	0.448A	1.19Kg		Red-R Green-G
		DC24V	0.399A	1.19Kg		
		AC110V	0.132A	1.58Kg		
		AC220V	0.066A	1.58Kg		
	3	DC12V	0.560A	1.41Kg		Red-R Amber-A Green-G
		DC24V	0.534A	1.41Kg		
		AC110V	0.147A	1.80Kg		
		AC220V	0.073A	1.80Kg		
STD80ELF LED Steady/Flashing	4	DC12V	0.672A	1.63Kg		Red-R Amber-A Green-G Blue-B
		DC24V	0.495A	1.63Kg		
		AC110V	0.163A	2.02Kg		
		AC220V	0.081A	2.02Kg		
	5	DC12V	0.784A	1.85Kg		Red-R Amber-A Green-G Blue-B White-W
		DC24V	0.591A	1.85Kg		
		AC110V	0.179A	2.24Kg		
		AC220V	0.089A	2.24Kg		

3 Sound tone combination

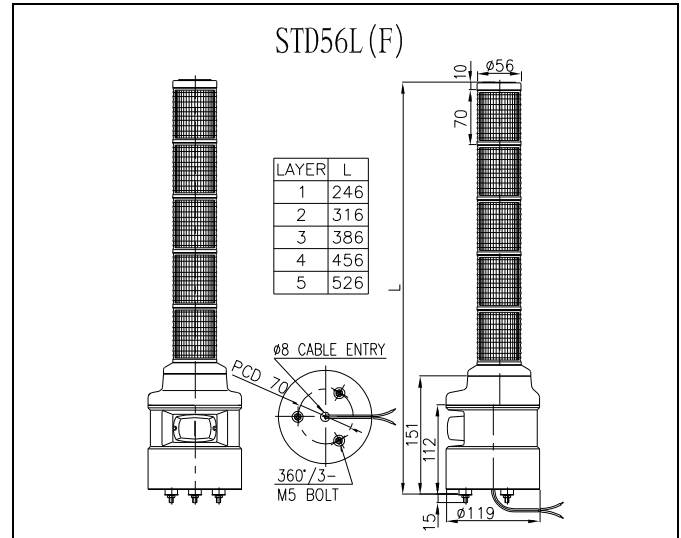
	Main Built-in Sounds	CH	Sound Tone	DB(Max)
WS	5Warning Sounds	ch1 ch2 ch3 ch4 ch5	Fire A-ANG Sound Emergency WA-U Sound Ambulance PI-PO Sound Machinery Fault PI-PI Sound High-Expasion Foam release PI-Sound	105dB
WM	5Melodies	ch1 ch2 ch3 ch4 ch5	Sweet Home For Elise Cuckoo Waltz Piano Sonata Turkish March	105dB
WA	5Alarms	ch1 ch2 ch3 ch4 ch5	Beep. intermittent Door chime Phone Ring sound PI.PI.PI. short interval Tripping bead sound	103dB
WV	3Voice Signals	Ch1 Ch2 Ch3	Voice recording 3 channels	95dB

4 Structure Drawing

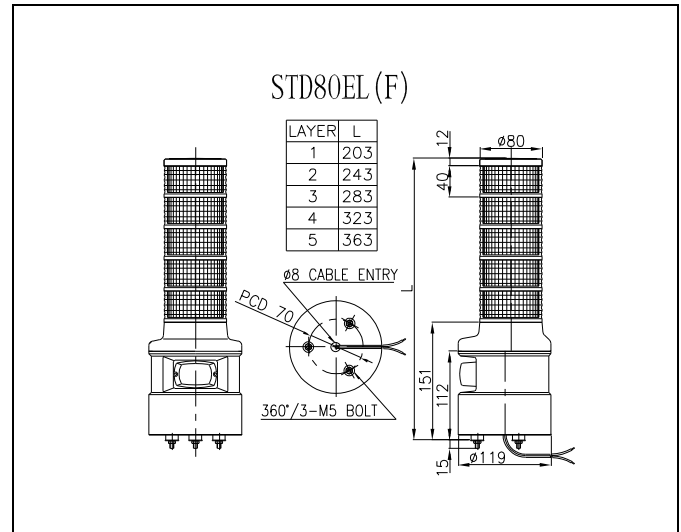
1. STD56EL/ STD56ELF



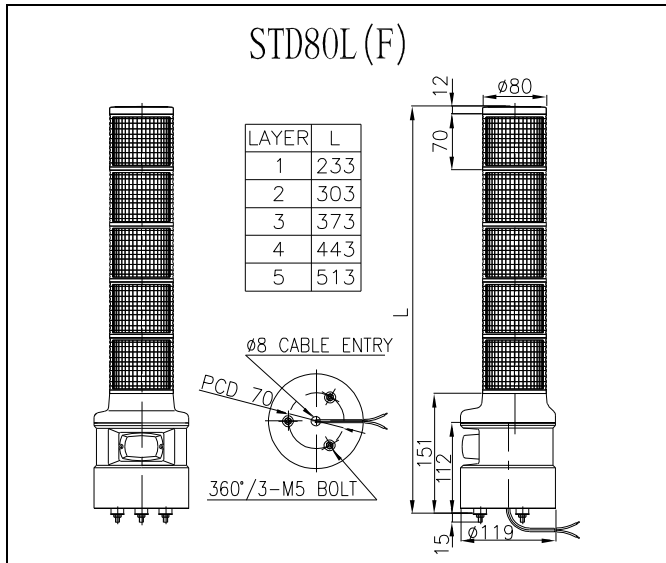
2. STD56L/ STD56LF



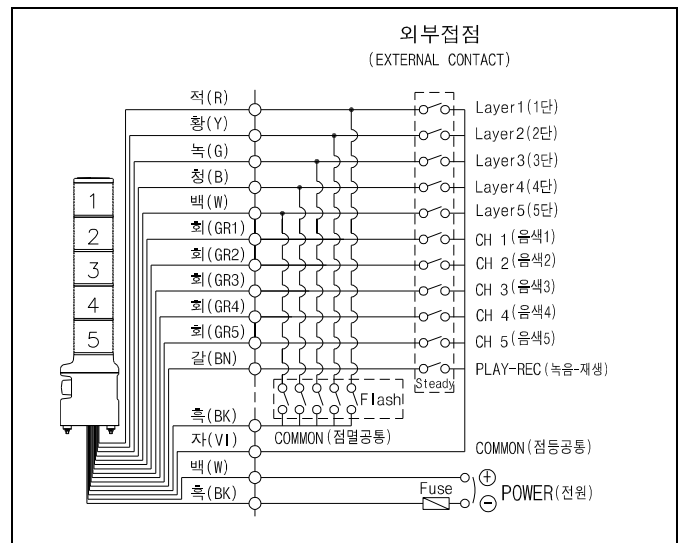
3. STD80EL/ STD80ELF



4. STD80L/ STD80LF



Steady/Flashing-STD56(E)LF,STD80(E)LF Wiring Instructions



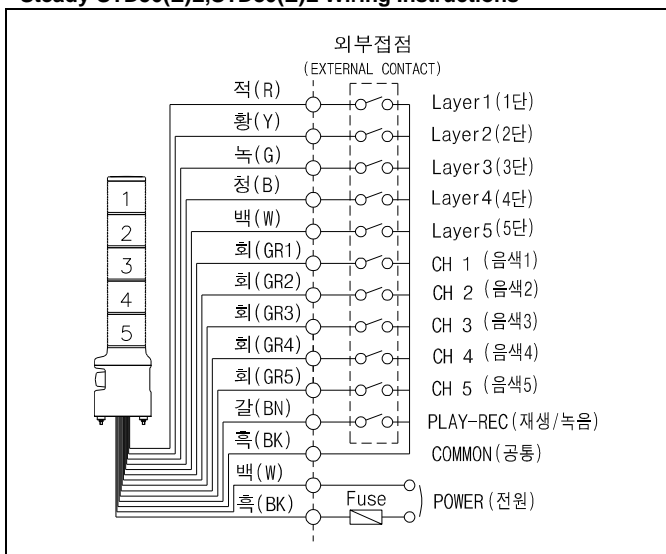
5 Wiring Instructions

Power lines and signal sound tone lines come out from the product. Please connect them correctly after referring to below instruction.

- ▶ Power line
- Power line: UL1015-NO.18(0.75sq) X 2c 400mm
- In case of product using AC voltage, connect the line without Polarity(wire color).
- In case of product using DC voltage, black line is negative(-).

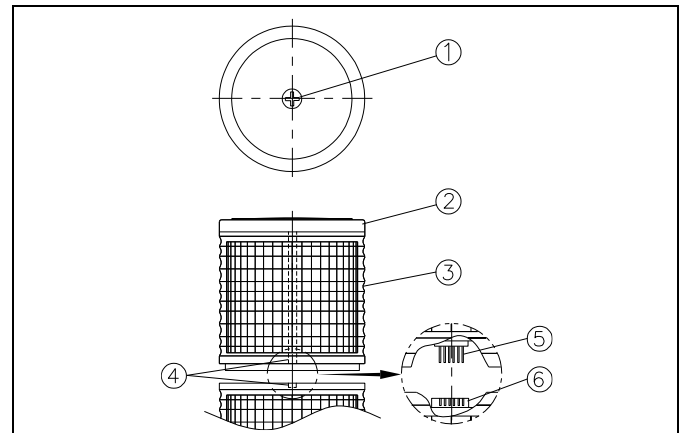
- ▶ Signal line
- Signal line: UL1007-NO.22(0.3sq) 400mm

Steady-STD56(E)L,STD80(E)L Wiring Instructions



6 LED Kit change & color rearrangement

This product is made with all-in-one kit for a source of light and lens. Lens kits of each stack are connected by connecting pin. Please be careful, when arranging color of the lens or changing it.



1) Warning!

- Must turn off power supply and change bulb after 1 minute at least.

2) Lens Removal

- Release the bolts ① which fix the cover and take off the cover ②.

3) Release lens

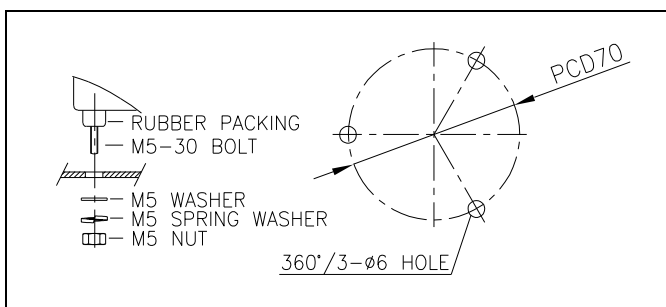
- Take off lenses ③ what you need to change.

4) Lens Kit Change & Assembling

- To change lens kit or rearrange it, please check ④ and then check the connection situation of ⑤. Please insert the rubber packing correctly to stick it inserted on the top of lens.

7 Mounting Instructions

- This product was manufactured with the structure for indoor use. It is possible to install the product in any direction when using indoor space.
- Outdoor use is limited at a place where no water or very little water percolates. Mounting also should be done only on the vertical standing direction.
- Please make a hole by a drill where you need to attach our product and refer to below picture for a hole size. (Make sure PCD from external view drawing.)
- Fix the product by using nuts(M5-3EA) originally equipped on mounting bolt on bottom of the product.



Output 2 kinds of sounds	Short by signal line of sound	Rechecking for wiring
	Faulty of sound tone selection switch	Contact Qlight or their distributors
Fault of sound output	Wrong wiring	Rechecking for wiring
	Faulty of HORN	Contact Qlight or their distributors
Steady, Flashing – No Sound - No	No power supplying	Checking for power supply
	Wrong wiring	Rechecking for wiring

■ Inquiry for Product and C/S

QLIGHT CO., LTD.

<http://www.qlight.com>

E-mail : trade@qlight.com

Overseas Sales Team / Factory

Tel) +82-55-328-4082 Fax) +82-55-328-3883

185-25 Mukbang-ro Sangdong-Myeon, Gimhae-Si,

Gyeongsangnam-do, Korea

8 Caution

- Insulate the end of wiring that is not used. A short circuit of signal line can cause a trouble.
- If using voltage is seriously higher or lower than rated voltage, it can reduce the self-life of the product or can cause a problem on product operating. Make sure the using voltage does not exceed +/-5% of the rated voltage.
- If lens or body of the product is contaminated by chemicals such as thinner, benzene, the product can be damaged, discolored or deformed. Please be careful.
- Do not give strong impact to the product. It can be a reason of wire disconnection or short circuit.
- Do not strongly pull the wire out from the product. It can cause a disorder.

9 Trouble Shooting

Symptom	Reason	Solution
No emitting partially LED signal light	LED partially damaged	Checking for voltage
Output of high sound more than standards	Supplying voltage higher than rated Voltage	
Weak light, sound lose	Supplying voltage lower than rated Voltage	
Steady – Ok Flashing - No	Wrong wiring	Rechecking for wiring