



X CLOSE

Rotary Switch > SRBV Series > SRBV170701

8-positions Low-profile Vertical Type SRBV Series

| [Dimensions](#) | [Mounting Hole Dimensions](#) | [Operation Part Details \(a\)](#) |
| [Circuit Diagram and Dummy Terminals](#) | [Packing Specifications](#) | [Attached Parts](#) |
| [Soldering Conditions](#) |



Part number [Series Common Info](#)
SRBV170701

NET SHOP

3D CAD

RoHS

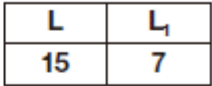
Print

Inquiry

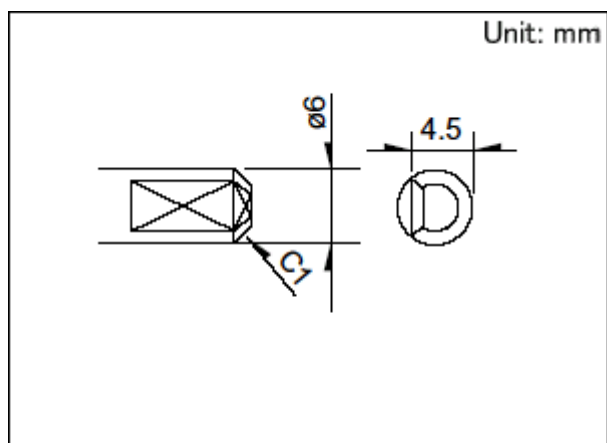
Poles	1	
Positions	7	
Changeover angle	30 ± 3°	
Changeover timing	Non shorting	
Rotational torque	30 ± 15mN·m	
Actuator configuration	Flat	
Actuator length	L: 15mm	
Operating temperature range		-10°C to +85°C
Rating (max.)/(min.) (Resistive load)		0.3A 16V

		DC/50μA 3V DC
		50mΩ
Electrical performance	Contact resistance (Initial performance/After lifetime)	max./150mΩ
		max.
	Insulation resistance	100MΩ min. 100V DC
	Voltage proof	100V AC for 1 minute
	Terminal strength	5N for 1 minute
Mechanical performance	Actuator strength	Rotational direction 0.6N·m
		Push direction 100N
		Measuring position from mounting surface 10mm
	Wobble of actuator (load at the tip of shaft: 1N)	Shaft wobble (max. value) 0.2mm max.
		Applicable mounting dimension 15mm
Durability	Operating life without load	10,000 cycles
		100mΩ max.
	Operating life with load (at max. rated load)	10,000 cycles
Environmental performance		150mΩ max.
	Cold	-20±2°C for 96h
	Dry heat	85±2°C for 96h
	Damp heat	40±2°C, 90 to 95%RH for 96h
Minimum order unit (pcs.)		Japan 165
		Export 330

Dimensions

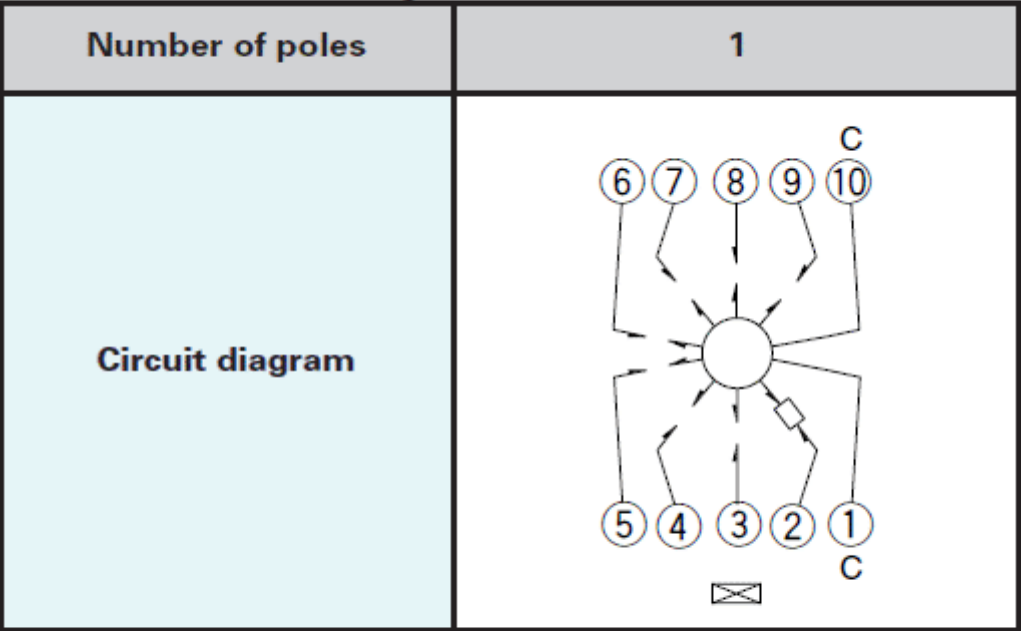
[illegible]

Operation Part Details (a)



Circuit Diagram and Dummy Terminals

Standard Circuit Diagram (Viewed from the Direction A)



Dummy Terminals

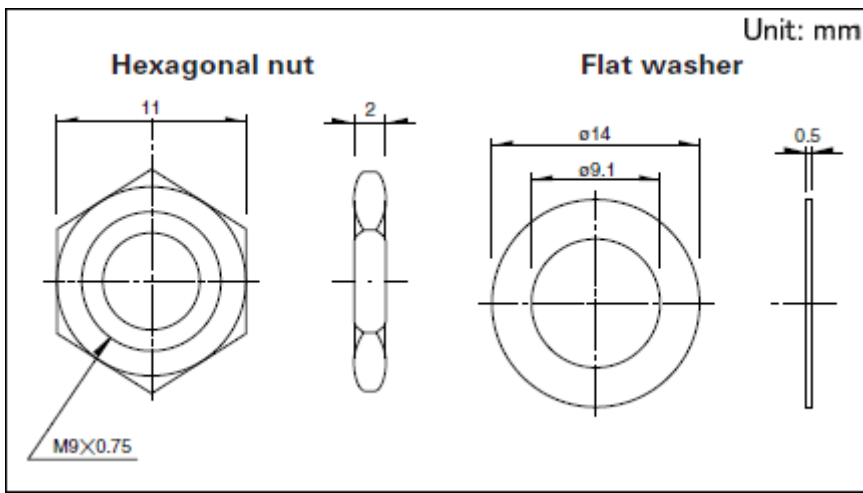
7-positions	⑨
-------------	---

Packing Specifications

Bulk

Number of	1 case / Japan	165
packages (pcs.)	1 case / export packing	330
Export package measurements (mm)	400 × 270 × 185	

Attached Parts



The following parts are included with the product.

Soldering Conditions

Reference for Dip Soldering

Items	Preheating temperature-
	Preheating time -
Dip soldering	Soldering temperature $260 \pm 5^{\circ}\text{C}$
	Duration of immersion $10 \pm 1\text{s}$

Reference for Hand Soldering

Soldering temperature	$350 \pm 10^{\circ}\text{C}$
Soldering time	$3 + 1/0\text{s}$

Notes are common to this series/models.

1. This site catalog shows only outline specifications. When using the products, please obtain formal specifications for supply.
2. Please place purchase orders per minimum order unit (integer).
3. Products other than those listed in the above chart are also available. Please contact us for details.
4. This products can be used in vehicles.
Although these products are designed to perform over a wide operating temperature range, please ensure that you receive and read the formal delivery specifications before use.

Inquiries about Products

[Inquiry.](#)

COPYRIGHT© 2020 ALPS ALPINE CO., LTD