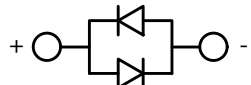
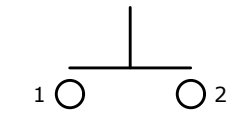


RECOMMENDED  
PANEL CUT-OUT

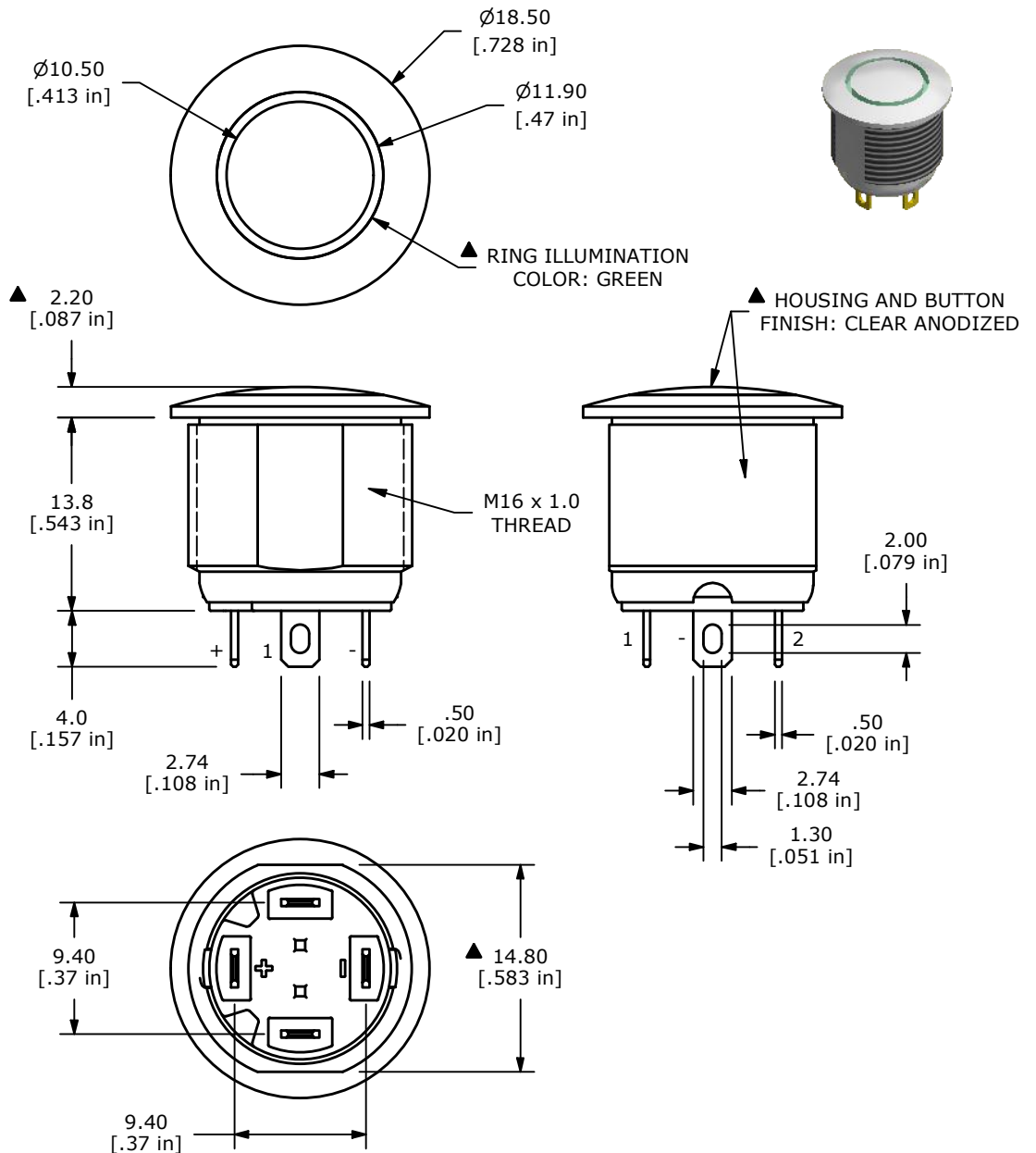



▲ SCHEMATIC  
OFF - (ON)

( ) DENOTES MOMENTARY FUNCTION

## NOTE:

1. ALL DIMENSIONS IN MM [INCH]
2. GENERAL TOLERANCE: X.X =  $\pm 0.4$   
X.XX =  $\pm 0.25$
3. TERMINAL NUMBERS FOR REF ONLY
4. CONTACT MATERIAL: SILVER PLATED
5. RATING: 2A 36VDC
6. ELECTRIC LIFE: 200,000
7. INSULATION RESISTANCE: 1,000M $\Omega$  MIN @ 500VDC.
8. DIELECTRIC STRENGTH: 2,000VAC MIN. FOR 1 MINUTE
9. CONTACT RESISTANCE: 50m $\Omega$  MAX. @ 1A 12VDC
10. OPERATING TEMP.: -20°C to 70°C
11. TRAVEL: 2.0mm
12. ▲ DENOTES CRITICAL PARAMETER.
13. ILLUMINATION COLOR: GREEN
14. HARDWARE SUPPLIED: O-RING AND HEXNUT (NOT SHOWN)
- ▲ 15. ILLUMINATION VOLTAGE RATING: 3.1V @ 20 mA
16. INGRESS PROTECTION: IP67



REV	ECO NO	DESCRIPTION	DATE	BY	<div> E-SWITCH®</div>					OBJECT ID
B	ECO-100928	ILLUMINATION VOLTAGE TO 3.1V @ 20 mA	04/20/22	MR						100115977
A	ECO-100059	RELEASE	04/26/21	JM	TITLE PVA6RE24231					
THE INFORMATION CONTAINED IN THIS DOCUMENT IS PROPRIETARY TO E-SWITCH AND IS NOT TO BE COPIED OR TRANSFERRED					SCALE 2:1	DATE 4/22/2021	DR JM	DWG T960051	REV B	

THE INFORMATION CONTAINED IN THIS DOCUMENT IS PROPRIETARY TO  
E-SWITCH AND IS NOT TO BE COPIED OR TRANSFERRED