

# DEK-OE- 24DC/ 48DC/100/T - Solid-state relay terminal block



2964254  
<https://www.phoenixcontact.com/gb/products/2964254>

Please be informed that the data shown in this PDF document is generated from our online catalog. Please find the complete data in the user documentation. Our general terms of use for downloads are valid.



Input solid-state relay terminal block, input: 24 V DC, output: 3 - 48 V DC/100 mA, with isolating plug in output, terminal block width: 6.2 mm

## Commercial data

Item number	2964254
Packing unit	10 pc
Minimum order quantity	1 pc
Sales key	CK61D1
Product key	CK61D1
Catalog page	Page 71 (IF-2002)
GTIN	4017918100803
Weight per piece (including packing)	21.06 g
Weight per piece (excluding packing)	21.06 g
Customs tariff number	85364190
Country of origin	CN

# DEK-OE- 24DC/ 48DC/100/T - Solid-state relay terminal block



2964254

<https://www.phoenixcontact.com/gb/products/2964254>

## Technical data

### Notes

General	The housing is open on one side. The appropriate cover is D-DEK 1,5 GN (2716949).
General	Use of EB 80-DIK... bridges in the DEK terminal blocks: Absorption of humidity from the ambient air as well as an unfavorable tolerance between a larger number of DEK terminal blocks and the EB 80-DIK... bridge may cause (minor) expansion of the DEK housing. When the EB 80-DIK... bridges are used, therefore, it is recommended that these be disconnected after about 10 to 12 DEK terminal blocks and a wire bridge to the next DEK terminal block be inserted in their place.

### Product properties

Product type	Solid-state relay module
Product family	DEK
Application	Input function
Operating mode	100% operating factor

### Insulation characteristics

Overvoltage category	III
Pollution degree	2

### Electrical properties

Test voltage (Input/output)	2.5 kV AC (Input/output)
-----------------------------	--------------------------

### Input data

Nominal input voltage $U_N$	24 V DC
Input voltage range in reference to $U_N$	0.9 ... 1.1
Input voltage range	21.6 V DC ... 26.4 V DC
Switching threshold "0" signal in reference to $U_N$	$\leq 0.4$
Switching threshold "1" signal in reference to $U_N$	$\geq 0.8$
Typical input current at $U_N$	6.5 mA
Typical response time	40 $\mu$ s (delay)
Typical turn-off time	40 $\mu$ s (delay)
Status display	Yellow LED
Protective circuit	Reverse polarity protection; Bridge rectifier
Transmission frequency	30 Hz

### Output data

Contact switching type	1 N/O contact
Design of digital output	electronic
Output voltage range	3 V DC ... 48 V DC
Limiting continuous current	100 mA
Voltage drop at max. limiting continuous current	$\leq 0.9$ V

# DEK-OE- 24DC/ 48DC/100/T - Solid-state relay terminal block



2964254

<https://www.phoenixcontact.com/gb/products/2964254>

Output circuit	2-conductor, floating
Protective circuit	Reverse polarity protection; Polarity protection diode
	Surge protection

## Connection data

Connection method	Screw connection
Stripping length	8 mm
Screw thread	M3
Conductor cross section rigid	0.2 mm <sup>2</sup> ... 2.5 mm <sup>2</sup>
Conductor cross section flexible	0.2 mm <sup>2</sup> ... 2.5 mm <sup>2</sup>
Conductor cross section AWG	24 ... 14
Tightening torque	0.5 Nm

## Dimensions

Width	6.2 mm
Height	80 mm
Depth	56 mm

## Material specifications

Color	green (RAL 6021)
-------	------------------

## Environmental and real-life conditions

### Ambient conditions

Ambient temperature (operation)	-20 °C ... 60 °C
Ambient temperature (storage/transport)	-20 °C ... 70 °C

## Standards and regulations

Standards/regulations	IEC 60664
	IEC 60664A
	DIN VDE 0110

## Mounting

Mounting type	DIN rail mounting
Assembly instructions	in rows with zero spacing
Mounting position	any

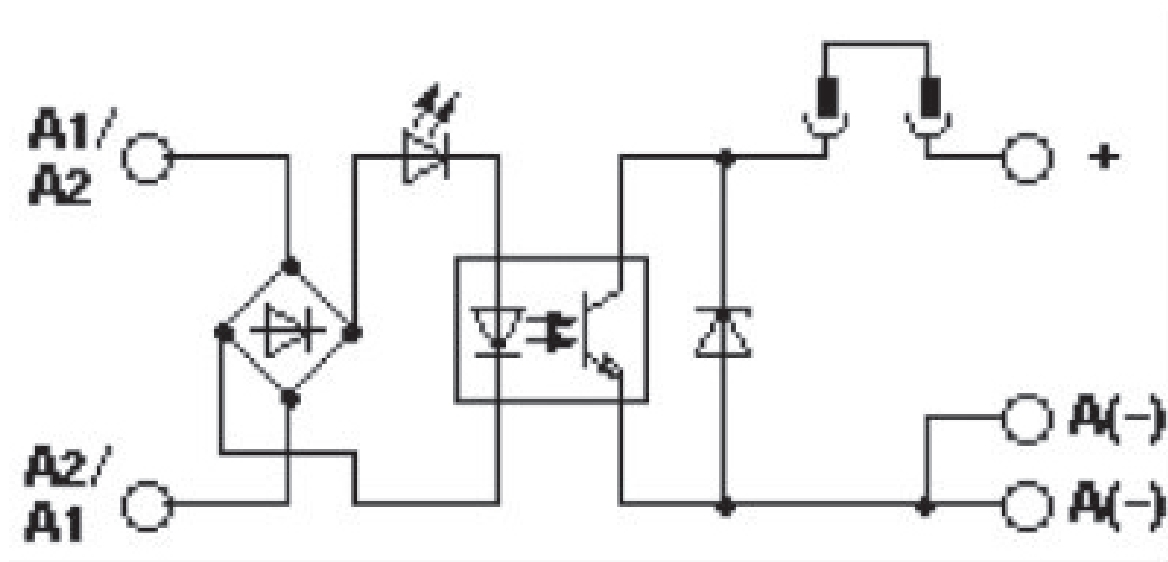
# DEK-OE- 24DC/ 48DC/100/T - Solid-state relay terminal block

2964254

<https://www.phoenixcontact.com/gb/products/2964254>

## Drawings

Circuit diagram



# DEK-OE- 24DC/ 48DC/100/T - Solid-state relay terminal block



2964254

<https://www.phoenixcontact.com/gb/products/2964254>

## Approvals

🔗 To download certificates, visit the product detail page: <https://www.phoenixcontact.com/gb/products/2964254>



**EAC**

Approval ID: TR\_TS\_D\_00573\_c



**EAC**

Approval ID: RU\*C-DE.\*08.B.00010

# DEK-OE- 24DC/ 48DC/100/T - Solid-state relay terminal block



2964254

<https://www.phoenixcontact.com/gb/products/2964254>

## Classifications

### ECLASS

ECLASS-11.0	27371604
ECLASS-12.0	27371604
ECLASS-13.0	27371604

### ETIM

ETIM 9.0	EC001504
----------	----------

### UNSPSC

UNSPSC 21.0	39122300
-------------	----------

# DEK-OE- 24DC/ 48DC/100/T - Solid-state relay terminal block



2964254  
<https://www.phoenixcontact.com/gb/products/2964254>

## Environmental product compliance

REACH SVHC	Lead 7439-92-1
	Hexahydromethylphthalic anhydride
China RoHS	Environmentally Friendly Use Period = 50 years
	For information on hazardous substances, refer to the manufacturer's declaration available under "Downloads"

# DEK-OE- 24DC/ 48DC/100/T - Solid-state relay terminal block



2964254

<https://www.phoenixcontact.com/gb/products/2964254>

## Accessories



Note: Applying some accessories below might limit this product.

### EB 2- DIK RD - Insertion bridge

2716693

<https://www.phoenixcontact.com/gb/products/2716693>



Insertion bridge, pitch: 6.15 mm, number of positions: 2, color: red



Max. current carrying capacity: 26 A

---

### EB 3- DIK RD - Insertion bridge

2716745

<https://www.phoenixcontact.com/gb/products/2716745>



Insertion bridge, pitch: 6.15 mm, number of positions: 3, color: red



Max. current carrying capacity: 26 A

---

# DEK-OE- 24DC/ 48DC/100/T - Solid-state relay terminal block



2964254

<https://www.phoenixcontact.com/gb/products/2964254>


## EB 4- DIK RD - Insertion bridge

2716758

<https://www.phoenixcontact.com/gb/products/2716758>

Insertion bridge, pitch: 6.15 mm, number of positions: 4, color: red



 Max. current carrying capacity: 26 A

---


## EB 5- DIK RD - Insertion bridge

2716761

<https://www.phoenixcontact.com/gb/products/2716761>

Insertion bridge, pitch: 6.15 mm, number of positions: 5, color: red



 Max. current carrying capacity: 26 A

---

# DEK-OE- 24DC/ 48DC/100/T - Solid-state relay terminal block



2964254

<https://www.phoenixcontact.com/gb/products/2964254>


## EB 10- DIK RD - Insertion bridge

2716774

<https://www.phoenixcontact.com/gb/products/2716774>

Insertion bridge, pitch: 6.15 mm, number of positions: 10, color: red



 Max. current carrying capacity: 26 A

---

## EB 80- DIK RD - Insertion bridge

2715953

<https://www.phoenixcontact.com/gb/products/2715953>

Insertion bridge, pitch: 6.2 mm, number of positions: 80, color: red



 Max. current carrying capacity: 26 A

# DEK-OE- 24DC/ 48DC/100/T - Solid-state relay terminal block



2964254

<https://www.phoenixcontact.com/gb/products/2964254>


## EB 5- DIK BU - Insertion bridge

2716677

<https://www.phoenixcontact.com/gb/products/2716677>

Insertion bridge, pitch: 6.15 mm, number of positions: 5, color: blue



 Max. current carrying capacity: 26 A

---


## EB 10- DIK BU - Insertion bridge

2716680

<https://www.phoenixcontact.com/gb/products/2716680>

Insertion bridge, pitch: 6.15 mm, number of positions: 10, color: blue



 Max. current carrying capacity: 26 A

# DEK-OE- 24DC/ 48DC/100/T - Solid-state relay terminal block



2964254

<https://www.phoenixcontact.com/gb/products/2964254>


## EB 80- DIK BU - Insertion bridge

2715940

<https://www.phoenixcontact.com/gb/products/2715940>

Insertion bridge, pitch: 6.2 mm, number of positions: 80, color: blue



 Max. current carrying capacity: 26 A

---

## D-DEK 1,5 GN - Separating plate

2716949

<https://www.phoenixcontact.com/gb/products/2716949>

Cover for setting the end of a terminal row, color: green



# DEK-OE- 24DC/ 48DC/100/T - Solid-state relay terminal block



2964254

<https://www.phoenixcontact.com/gb/products/2964254>

## ZB 6:UNBEDRUCKT - Zack marker strip

1051003

<https://www.phoenixcontact.com/gb/products/1051003>



Zack marker strip, Strip, white, unlabeled, can be labeled with: PLOTMARK, CMS-P1-PLOTTER, mounting type: snapped, for terminal block width: 6.2 mm, lettering field size: 6.15 x 10.5 mm, Number of individual labels: 10

---

## ZB 6,LGS:FORTL.ZAHLEN - Zack marker strip

1051016

<https://www.phoenixcontact.com/gb/products/1051016>



Zack marker strip, Strip, white, labeled, can be labeled with: CMS-P1-PLOTTER, printed horizontally: consecutive numbers 1 ... 10, 11 ... 20, etc. up to 491 ... 500, mounting type: snapped, for terminal block width: 6.2 mm, lettering field size: 6.15 x 10.5 mm, Number of individual labels: 10

# DEK-OE- 24DC/ 48DC/100/T - Solid-state relay terminal block



2964254

<https://www.phoenixcontact.com/gb/products/2964254>

## ZB 6/WH-100:UNBEDRUCKT - Zack marker strip

5060935

<https://www.phoenixcontact.com/gb/products/5060935>



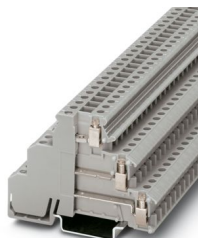
Zack marker strip, Strip, white, unlabeled, can be labeled with: PLOTMARK, CMS-P1-PLOTTER, mounting type: snapped, for terminal block width: 6.2 mm, lettering field size: 6.15 x 10.5 mm, Number of individual labels: 1000

---

## DIKD 1,5 - Initiator/actuator terminal block

2715979

<https://www.phoenixcontact.com/gb/products/2715979>



Initiator/actuator terminal block, nom. voltage: 250 V, nominal current: 24 A, connection method: Screw connection, 1st, 2nd and 3rd level, Rated cross section: 2.5 mm<sup>2</sup>, cross section: 0.2 mm<sup>2</sup> - 4 mm<sup>2</sup>, mounting type: NS 35/7,5, NS 35/15, color: gray

---

Phoenix Contact 2024 © - all rights reserved

<https://www.phoenixcontact.com>

PHOENIX CONTACT Ltd

Halesfield 13, Telford

Shropshire, TF7 4PG

01952 681700

[info@phoenixcontact.co.uk](mailto:info@phoenixcontact.co.uk)