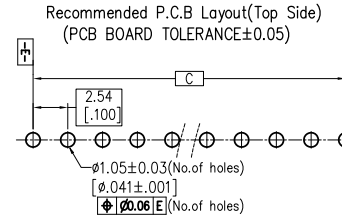
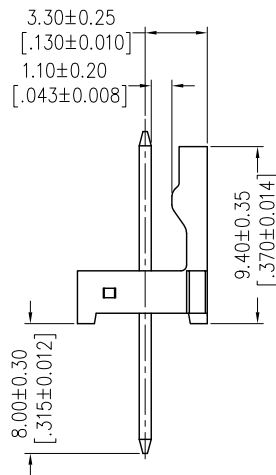
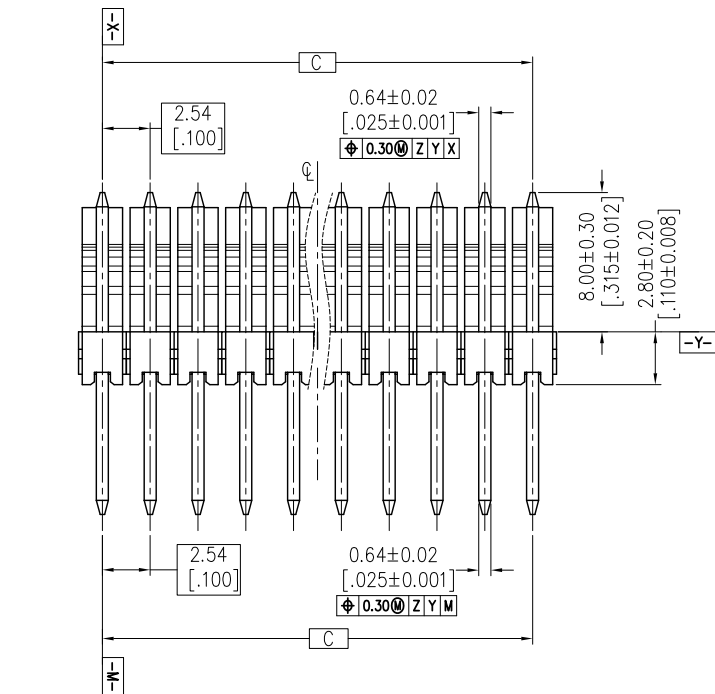
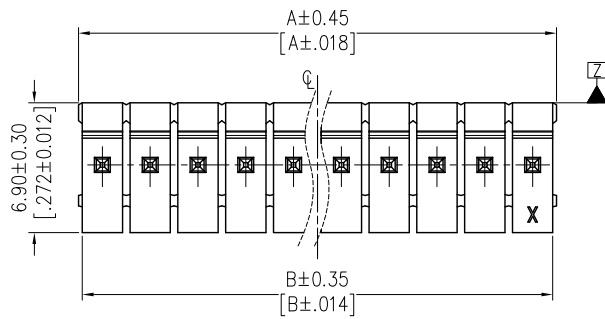


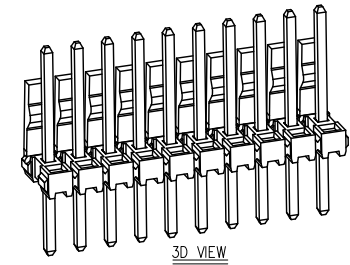
MAS-CON HEADER, Series 100, 2,54mm, 180° breakable, in-line splice



ORDERING INFORMATION			
Part No.	DIM A	DIM B	DIM C
MWWS100- 02- D_E	5,08	4,68	2,54
MWWS100- 03- D_E	7,62	7,22	5,08
MWWS100- 04- D_E	10,16	9,76	7,62
MWWS100- 05- D_E	12,70	12,30	10,16
MWWS100- 06- C_E	15,24	14,84	12,70
MWWS100- 07- C_E	17,78	17,38	15,24
MWWS100- 08- C_E	20,32	19,92	17,78
MWWS100- 09- C_E	22,86	22,46	20,32
MWWS100- 10- C_E	25,40	25,00	22,86
MWWS100- 11- C_E	27,94	27,54	25,40
MWWS100- 12- C_E	30,48	30,08	27,94
MWWS100- 13- C_E	33,02	32,62	30,48
MWWS100- 14- C_E	35,56	35,16	33,02
MWWS100- 15- C_E	38,10	37,70	35,56
MWWS100- 16- C_E	40,64	40,24	38,10
MWWS100- 17- C_E	43,18	42,78	40,64
MWWS100- 18- C_E	45,72	45,32	43,18
MWWS100- 19- C_E	48,26	47,86	45,72
MWWS100- 20- C_E	50,80	50,40	48,26
MWWS100- 21- C_E	53,34	52,94	50,80
MWWS100- 22- C_E	55,88	55,48	53,34
MWWS100- 23- C_E	58,42	58,02	55,88
MWWS100- 24- C_E	60,96	60,56	58,42
MWWS100- 25- C_E	63,50	63,10	60,96
MWWS100- 26- C_E	66,04	65,64	63,50
MWWS100- 27- C_E	68,58	68,18	66,04
MWWS100- 28- C_E	71,12	70,72	68,58
MWWS100- 29- C_E	73,66	73,26	71,12
MWWS100- 30- C_E	76,20	75,80	73,66
MWWS100- 31- C_E	78,74	78,34	76,20
MWWS100- 32- C_E	81,28	80,88	78,74
MWWS100- 33- C_E	83,82	83,42	81,28
MWWS100- 34- C_E	86,36	85,96	83,82
MWWS100- 35- C_E	88,90	88,50	86,36
MWWS100- 36- C_E	/	91,04	88,90

NOTES:
 Contact Resistance: 20mΩ max.
 Withstand Voltage: 2000V AC/minute
 Insulation Resistance: 1000MΩ min.
 Operation Temperature: -55°C to +105°C
 Contact Material: Brass
 Contact plating: Sn over Ni (Au on request)
 Insulator Material: PA66 (UL94V-0)

OPERATION	
X.X	±0.40
X.XX	±0.25
X.XXX	±0.15
Angle	± 3°
DIM	TOL



REV	DATE	NOTE	NAME
2	25.08.2020	DRW revised	JAL
1	03.04.2020	issued	LAD