

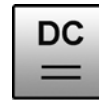
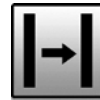
dimensions 31.5 x 12 x 20mm

operating range 12m

- ✓ plastic housing, compact design
- ✓ infrared light
- ✓ switching output no/nc switchable
- ✓ M8-connector 4-pin



**low-cost through-beam sensor
with high operating range**



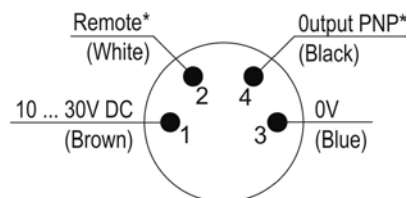
Technical Data

OY310370

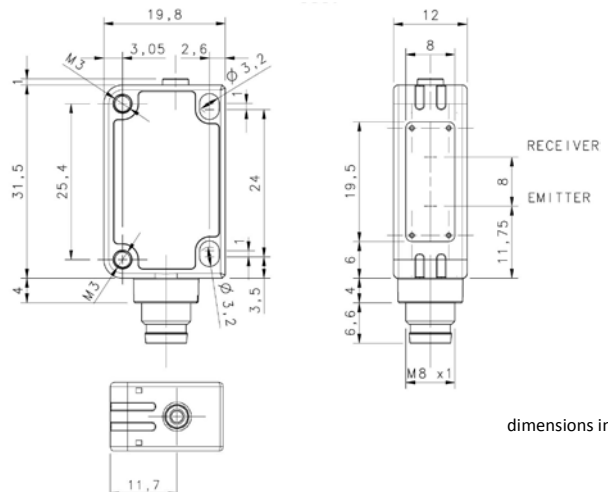
function	through-beam sensor (transmitter / receiver)
operating range	12m
residual ripple	< 10%
current consumption (w/o load)	≤ 20mA
output current (max. load)	≤ 100mA
output signal	NO / NC programmable
voltage drop	≤ 2V DC
response / decay time	≤ 2ms
switching frequency	250Hz
transmitting element (pulsed)	LED, infrared
wavelength	860nm
short-circuit protected	+
reverse polarity protected	+
display (signal, only receiver)	LED yellow
display (operating, only transmitter)	LED green
material (housing)	plastic (ABS)
material (front screen)	PMMA
system of protection (EN60529)	IP 67
temperature (operating)	-20 ... +55°C
temperature (storage)	-20 ... +70°C
connection	M8-connector, 4-pin

connection:

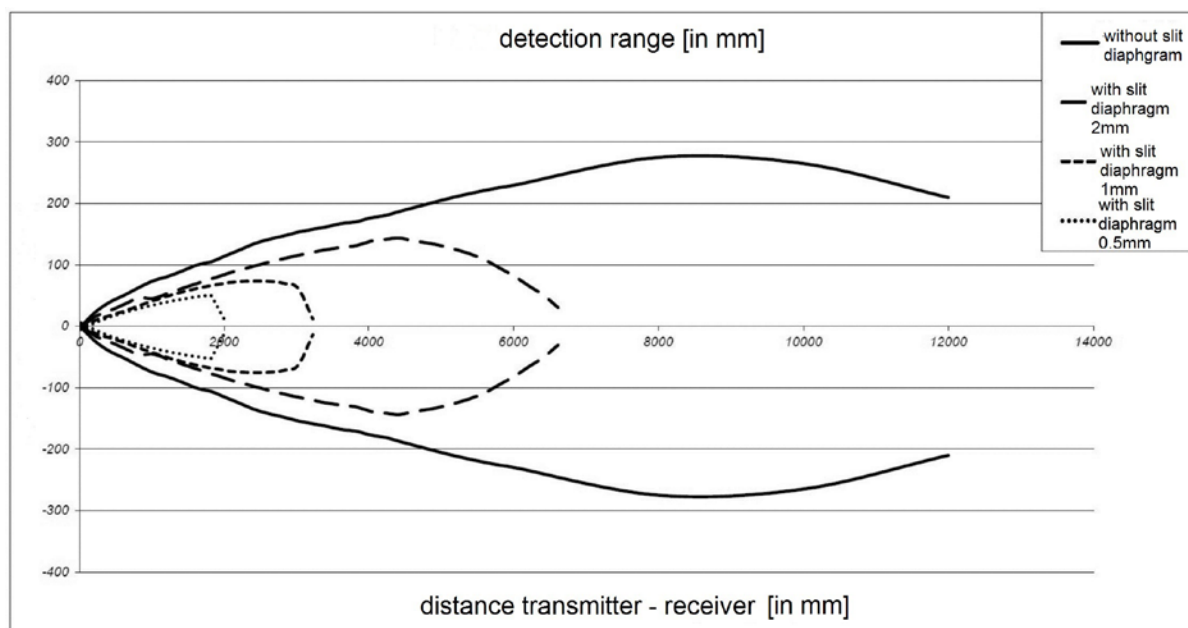
dimensional drawing:



*only receiver



dimensions in mm



Alignment

Position the transmitter and receiver in a way that they face each other. Take note of the maximum operating range. Fix the receiver.

Then move the transmitter both in horizontal and vertical way in order to determine the switch-on and switch-off points. Fix the transmitter exactly in the middle between these points.

Setting of the switching output

If you connect the „Remote“-wire (white) with the operating voltage (brown), the switching output operates in a light-on mode (NC).

If you do not connect the „Remote“-wire (white) or connect it with 0V (blue), the switching output operates in a dark-on mode (NO).

Article no: **OY310370**

Connection accessories: e.g. **VK200375**

Accessories

Article no.	Description	Material
AO000473	bracket for lateral mounting	steel chrome-plated
AO000474	bracket L-shaped mounting	steel chrome-plated
AO000475	slit diaphragm 0.5x19mm for design 31	steel chrome-plated
AO000476	slit diaphragm 1x19mm for design 31	steel chrome-plated
AO000477	slit diaphragm 2x19mm for design 31	steel chrome-plated
AY000118	fastening-parts for sensors design 09/16/26/31/33	steel

Warning: Never use these devices in applications where the safety of a person depends on their functionality.