

**OG050571****OPTICAL SENSORS • FORKED LIGHT BARRIERS**

sensor optical, fork, 25x10x45mm, fork width 5mm, 10-30V DC, 1x PNP/NPN NC/NO, Connector M8 3pin, IP67, Aluminum+Plastic, Infrared light, 10kHz pulsed, Manual adjustment

**MECHANICAL FEATURES**

Ambient temperature	-25 °C ... 60 °C
Degree of protection (IP)	IP67
Design	Cuboid
Diameter detection	-
Fork depth	17 mm
Fork light barrier design	Furcate
Fork width	5 mm
Housing material	Aluminum
Installation bracket	-
Material of optical surface	Plastic
Sensor height	25 mm
Sensor length	10 mm
Sensor width	45 mm

**ELECTRICAL FEATURES**

Analog output 0 V ... 10 V	-
Analog output 4 mA ... 20 mA	-
Connection to amplifier	-
Decay time	0.05 ms
Dynamic switching output	-
Equipment protection class	Protection class 3
Hysteresis	0.1 mm
No-load current	30 mA
Number of pins	3
Number of switching outputs	1
Operating voltage	10 V ... 30 V
Rated switching current	100 mA
Relative repeat accuracy	0.02 mm
Repeatability +/-	20 µm
Response time	0.05 ms
Reverse polarity protection	+
Scanning function	Light-/dark-on mode
Setting procedure	Manual adjustment

**ELECTRICAL FEATURES**

Short-circuit protection	+
Switching frequency	10000 Hz
Type of electrical connection	Connector M8
Type of switching function	Normally closed contact/normally open contact
Type of switching output	PNP/NPN
Type of the forked light barrier	Standard
Voltage drop	1.5 V
Voltage type	DC
With communication interface, analog	-
With communication interface, RS-232	-
With other analog output	-
With time function	-

**OPTICAL FEATURES**

Min. object size	0.1 mm
Resolution	100 µm
Light beam form	Point
Pulsed light source	+

**OTHER FEATURES**

Feeding technology	+
--------------------	---

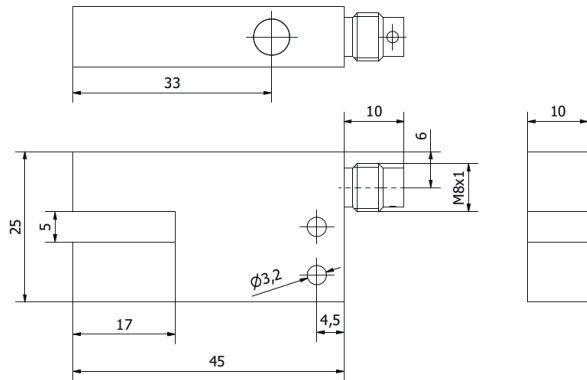
**Other**

Packaging dimensions	150mm x 10mm x 160mm
Shipping weight	
Tariff code	85365019

**Classification**

ipf product group	110
eClass 8.0	27270909
eClass 9.0	27270909
eClass 9.1	27270909
ETIM-5.0	EC002720
ETIM-6.0	EC002720
ETIM-7.0	EC002720

**Connection**

**Dimensional drawing****Installation**

Mounting / installation may only be carried out by a qualified electrician!

**Disposal****Safety warnings**

Before initial operation, please make sure to follow all safety instructions that may be provided in the product information. Never use these devices in applications where the safety of a person depends on their functionality. LED lighting systems can generate intensive UV radiation, which can damage your eyes in case of improper use. The manufacturer cannot be held responsible for damages that result from improper use or connection.