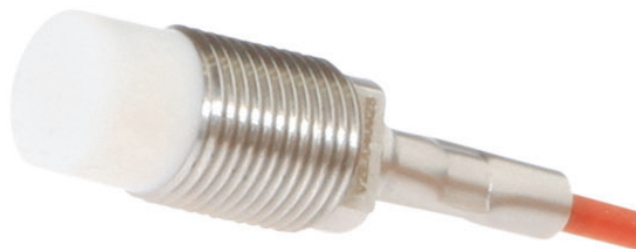


KN126050
CAPACITIVE SENSORS • INCREASED AMBIENT TEMPERATURE

sensor capacitive, M12x1 25long, Non-flush, Sn: 1-25, 250°C, Amplifier Amplifier, Cable 2m FEP, IP67, V2A


MECHANICAL FEATURES

Ambient temperature (MAX)	250 °C
Ambient temperatures < -25°C	+
Cable length	2 m
Degree of protection (IP)	IP67
Design	Cylinder, screw-thread
Housing material	Stainless steel (V2A)
Increased ambient temperatures > 80°C	+
Material of cable sheath	FEP
Mechanical mounting condition for sensor	Non-flush
Pressure-proof	-
Sensor length	25 mm
Thread pitch	1 mm
Thread size, metric	12

ELECTRICAL FEATURES

Cascadable	-
Reverse polarity protection	+
Short-circuit protection	+
Suitable for safety functions	-
Switching distance	25 mm
Switching distance	1 mm ... 25 mm
Type of electrical connection	Cable
Type of switching function	Amplifier
Type of switching output	Amplifier
With monitoring function of downstream devices	-

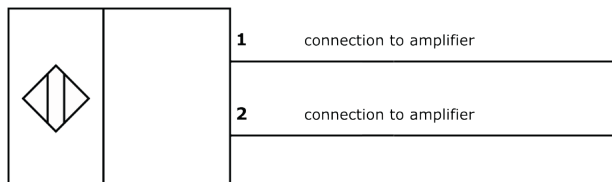
OTHER FEATURES

Level detection	+
Other	
Packaging dimensions	77.0mm x 25.0mm x 123.0mm
Shipping weight	0.08kg
Tariff code	85365019

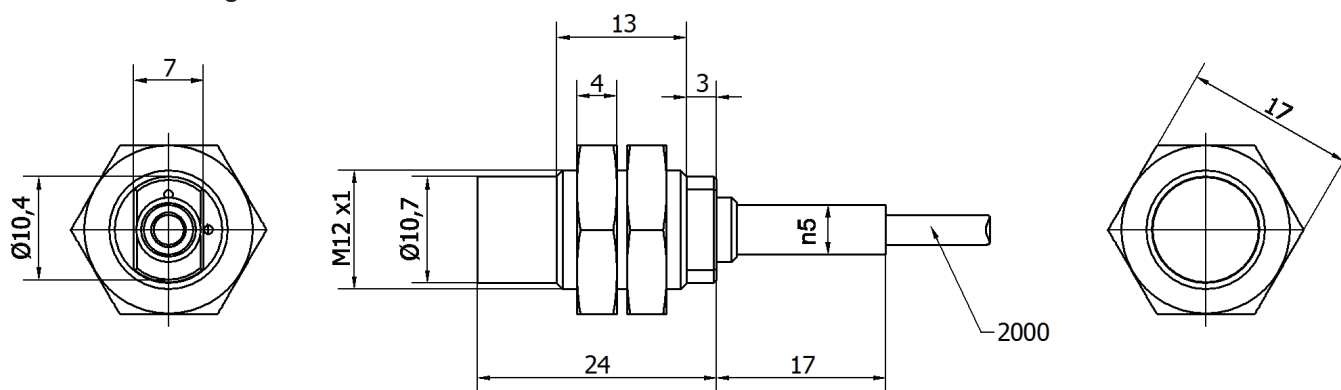
Classification

ipf product group	242
eClass 8.0	27270102
eClass 9.0	27270102
eClass 9.1	27270102
ETIM-5.0	EC002715
ETIM-6.0	EC002715
ETIM-7.0	EC002715

Connection



Dimensional drawing



Installation



Mounting / installation may only be carried out by a qualified electrician!

Disposal



Safety warnings

Before initial operation, please make sure to follow all safety instructions that may be provided in the product information.

Never use these devices in applications where the safety of a person depends on their functionality.

LED lighting systems can generate intensive UV radiation, which can damage your eyes in case of improper use. The manufacturer cannot be held responsible for damages that result from improper use or connection.