

High-current probe

HSS-621 305 400 S 5002 M

Item HSS-621-0002



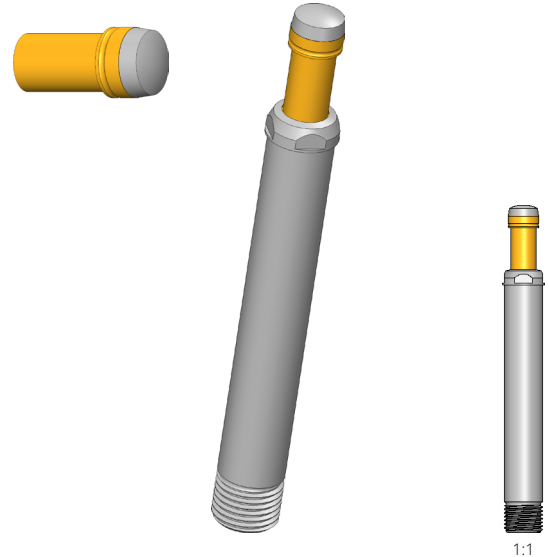
GO TO PRODUCT

ingun[®]

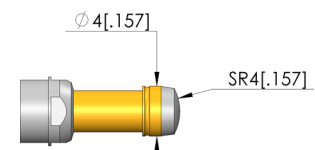
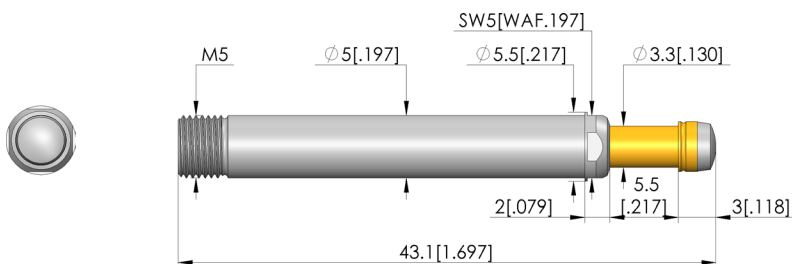
Partner for Future Technology

- Trusted high-current probes, optimally sized for current load capacity ratio
- Low resistance probe with Ri typical: < 10 mOhm
- For use in function and burn-in tests
- Large selection of tip styles and spring forces for optimum contact with DUT
- Secure hold in the receptacle due to threaded connection

INGUN SELECTION



1:1



General data

Product group:	High-current test probe
Sub-product group:	Standard HSS (screw-in)
Series:	HSS-621 M screw-in
Grid:	6.35 mm [250 mil]
Contacting from:	Pad, Female connector
Magnetic:	Yes
Installation type:	Screw-in
Quick-exchange system:	Yes
Adjustable installation height:	No
Non-rotating:	No
Screw-in torque:	40 cNm [3.54 lbf-in]
Compatible receptacle(s):	KS-621 M
Min. temperature:	- 100 °C [- 212 °F]
Max. temperature:	+ 200 °C [+ 392 °F]
RoHS-compliant:	RoHS-3;6c

Electrical data

Current load capacity / rated current:	75 A
Typical resistance (Ri):	<5 mOhm

Mechanical data

Total length:	43.1 mm [1.69 in]
Barrel diameter:	5 mm [.196 in]
Maximum stroke:	5.5 mm [.216 in]
Spring pre-load:	1.99 N [7.15 ozf]
Collar height:	02
Spring force at working stroke:	5 N [17.9 ozf]
Recommended working stroke:	4.4 mm [.173 in]

HIGH-CURRENT TEST PROBE

High-current probe

HSS-621 305 400 S 5002 M

Item HSS-621-0002

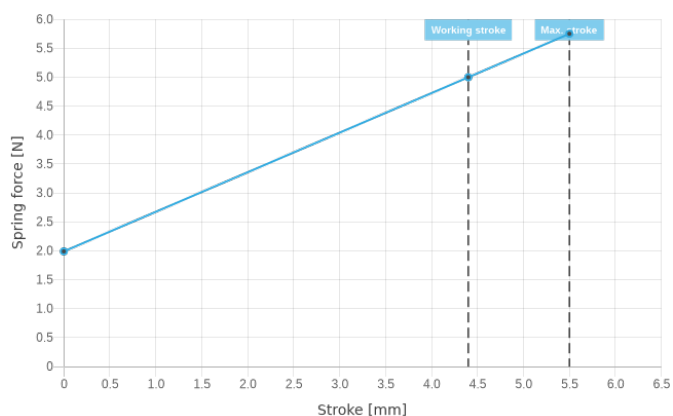


ingun[®]

Partner for Future Technology

Tip style data

Tip style: 05 bullet-nosed (full radius)
Tip diameter: 4 mm [.157 in]
Tip style surface: S silver
Tip style material: 3 CuBe



INGUN Prüfmittelbau GmbH

Max-Stromeyer-Straße 162
78467, Constance, Germany
Phone +49 7531 8105-0
Customer hotline +49 7531 8105-888
Fax +49 7531 8105-65
info@ingun.com



Prices and delivery times on request.
Technical changes reserved. 04/24_GB

Learn more about
High-current test probe



ingun.com

HIGH-CURRENT TEST PROBE