

# High-current probe

## HSS-150 305 400 S 9902 M

Item HSS-150-0065

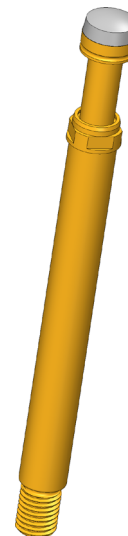
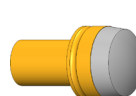


GO TO PRODUCT

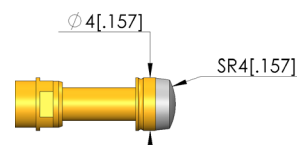
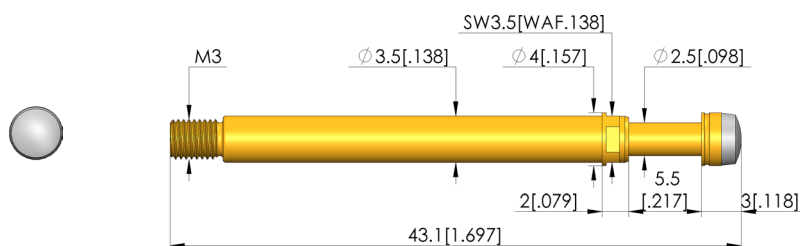
**ingun**<sup>®</sup>

Partner for Future Technology

- Trusted high-current probes, optimally sized for current load capacity ratio
- Low resistance probe with  $R_i$  typical: < 10 mOhm
- For use in function and burn-in tests
- Large selection of tip styles and spring forces for optimum contact with DUT
- Secure hold in the receptacle due to threaded connection



1:1



### General data

Product group:	High-current test probe
Sub-product group:	Standard HSS (screw-in)
Series:	HSS-150 M screw-in
Grid:	5.08 mm [200 mil]
Contacting from:	Pad, Female connector
Magnetic:	Yes
Installation type:	Screw-in
Quick-exchange system:	Yes
Adjustable installation height:	No
Non-rotating:	No
Screw-in torque:	10 - 20 cNm [.885 - 1.77 lbf·in]
Compatible receptacle(s):	KS-150 M
Min. temperature:	- 100 °C [- 212 °F]
Max. temperature:	+ 200 °C [+ 392 °F]
RoHS-compliant:	RoHS-3;6c

### Electrical data

Current load capacity / rated current:	50 A
Typical resistance ( $R_i$ ):	<10 mOhm

### Mechanical data

Total length:	43.1 mm [1.69 in]
Barrel diameter:	3.5 mm [.137 in]
Maximum stroke:	5.5 mm [.216 in]
Spring pre-load:	6.11 N [21.9 ozf]
Collar height:	02
Spring force at working stroke:	10 N [35.9 ozf]
Recommended working stroke:	4.4 mm [.173 in]

### Tip style data

Tip style:	05 bullet-nosed (full radius)
Tip diameter:	4 mm [.157 in]
Tip style surface:	S silver
Tip style material:	3 CuBe

HIGH-CURRENT TEST PROBE

# High-current probe

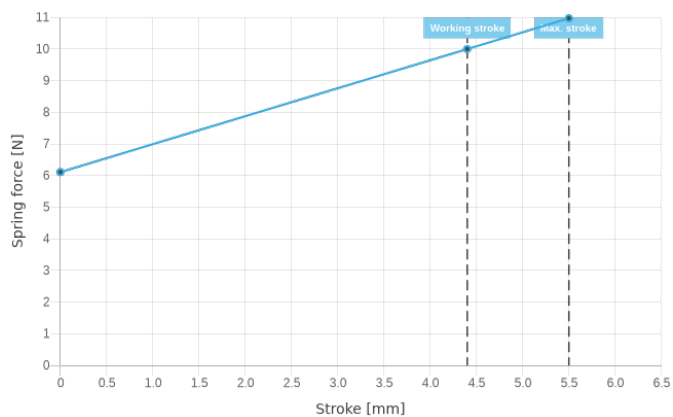
## HSS-150 305 400 S 9902 M

Item HSS-150-0065



**ingun**<sup>®</sup>

Partner for Future Technology



### INGUN Prüfmittelbau GmbH

Max-Stromeyer-Straße 162  
78467, Constance, Germany  
Phone +49 7531 8105-0  
Customer hotline +49 7531 8105-888  
Fax +49 7531 8105-65  
info@ingun.com



Prices and delivery times on request.  
Technical changes reserved. 04/24\_GB

Learn more about  
High-current test probe



ingun.com

HIGH-CURRENT TEST PROBE