

Spring-loaded test probe

GKS-945 357 106 A 1100

Item GKS-945-0005



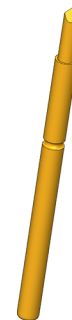
GO TO PRODUCT

ingun[®]

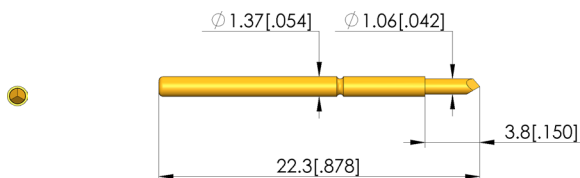
Partner for Future Technology

- Test probes for the construction of interfaces for reliable signal transmission
- Interface test probes are available for all interfaces from popular test system suppliers

INGUN SELECTION



1:1



General data

Product group:	Accessories (GKS / ADA)
Sub-product group:	Interface block probes
Series:	GKS-945
Grid:	2.54 mm [100 mil]
Contacting from:	Pad, via
Magnetic:	Yes
Installation type:	Plug-in
Quick-exchange system:	Yes
Adjustable installation height:	No
Non-rotating:	No
Compatible receptacle(s):	KS-945
Min. temperature:	- 40 °C [- 104 °F]
Max. temperature:	+ 80 °C [+ 176 °F]
RoHS-compliant:	RoHS-3;6c

Electrical data

Current load capacity / rated current:	5 A
Typical resistance (Ri):	<20 mOhm

Mechanical data

Total length:	22.3 mm [.877 in]
Barrel diameter:	1.37 mm [.053 in]
Maximum stroke:	3.2 mm [.125 in]
Spring pre-load:	0.6 N [2.15 ozf]
Collar height:	00
Spring force at working stroke:	1.1 N [3.95 ozf]
Recommended working stroke:	2.6 mm [.102 in]

Tip style data

Tip style:	57 30° 3-edged chisel, self-cleaning, special length
Tip diameter:	1.06 mm [.041 in]
Tip style surface:	A gold
Tip style material:	3 CuBe

Spring-loaded test probe GKS-945 357 106 A 1100

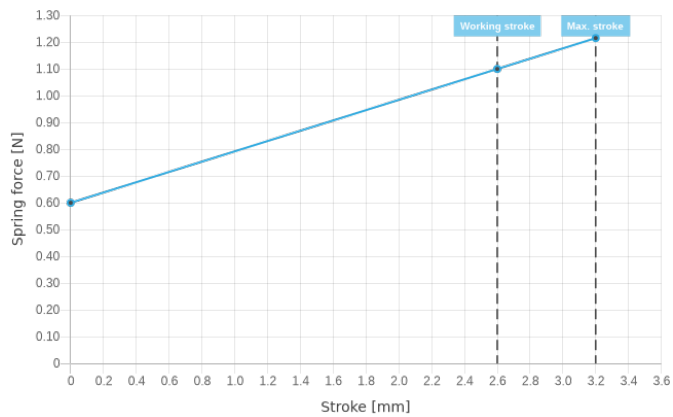
Item GKS-945-0005



GO TO PRODUCT

ingun[®]

Partner for Future Technology



INGUN Prüfmittelbau GmbH

Max-Stromeyer-Straße 162
78467, Constance, Germany
Phone +49 7531 8105-0
Customer hotline +49 7531 8105-888
Fax +49 7531 8105-65
info@ingun.com



Prices and delivery times on request.
Technical changes reserved. 04/24_GB

Learn more about
Test probes

