

Spring-loaded test probe

GKS-667 302 240 A 5002 M-AC

Item GKS-667-0013



GO TO PRODUCT

ingun[®]

Partner for Future Technology

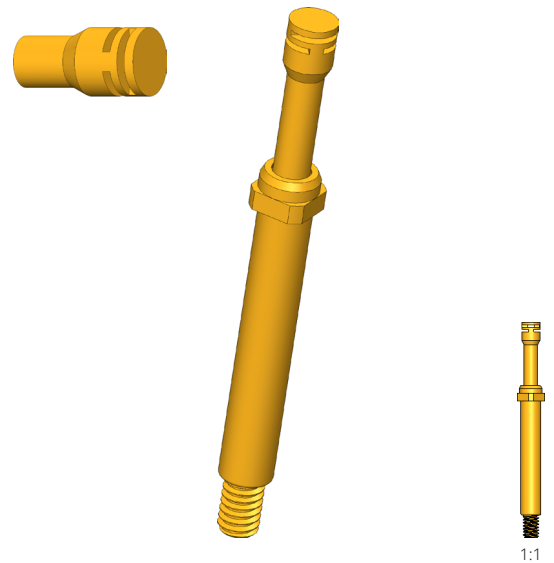
- Reduction of the contact surface temperature thanks to air cooling feature
- Equivalent dimensions to HSS-120 M
- Extended function of the HCM-667 M product series

Application

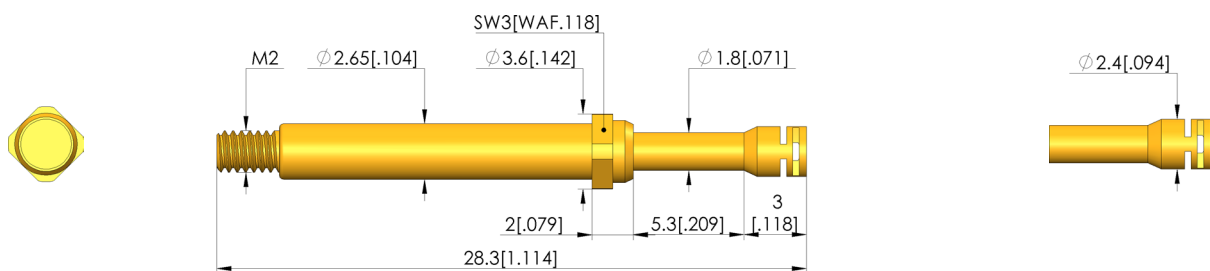
The GKS-667 M is used as a functional extension of the high-current multi-head solution (HCM). The additional air cooling it provides can improve the current transmission of the HCM.

Installation

The GKS-667 M is installed using the threaded receptacle. This allows the air cooling probe to be placed at any position on the HCM where a current-transmitting probe can be used.



1:1



General data

Product group:	Screw-in test probe
Sub-product group:	Screw-in test probe
Series:	GKS-667 M, screw-in
Grid:	4 mm [157 mil]
Contacting from:	Pin, posts, bead, flat contact
Magnetic:	Yes
Installation type:	Screw-in
Quick-exchange system:	Yes
Adjustable installation height:	No
Non-rotating:	No
Screw-in torque:	10 - 20 cNm [.885 - 1.77 lbf-in]
Compatible receptacle(s):	KS-113 M
Min. temperature:	- 100 °C [- 212 °F]
Max. temperature:	+ 200 °C [+ 392 °F]
RoHS-compliant:	RoHS-3;6c

Electrical data

Current load capacity / rated current:	5 A
Typical resistance (Ri):	<100 mOhm

Mechanical data

Total length:	28.3 mm [1.11 in]
Barrel diameter:	2.65 mm [.104 in]
Maximum stroke:	5 mm [.196 in]
Spring pre-load:	1.48 N [5.32 ozf]
Collar height:	02
Spring force at working stroke:	5 N [17.9 ozf]
Recommended working stroke:	4 mm [.157 in]

Tip style data

Tip style:	02 flat
Tip diameter:	2.4 mm [.094 in]
Tip style surface:	A gold
Tip style material:	3 CuBe

SCREW-IN TEST PROBE

Spring-loaded test probe GKS-667 302 240 A 5002 M-AC

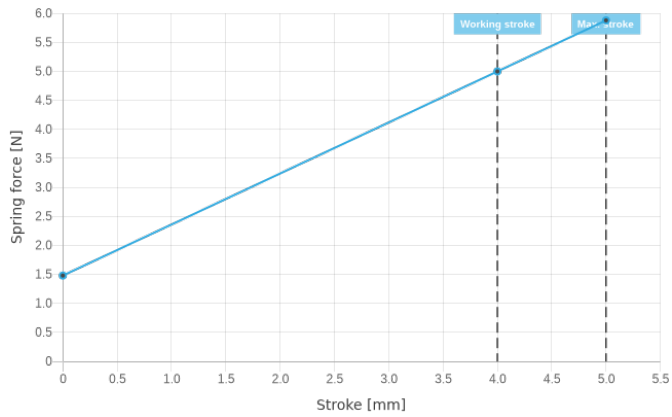
Item GKS-667-0013



GO TO PRODUCT

ingun[®]

Partner for Future Technology



INGUN Prüfmittelbau GmbH

Max-Stromeyer-Straße 162
78467, Constance, Germany
Phone +49 7531 8105-0
Customer hotline +49 7531 8105-888
Fax +49 7531 8105-65
info@ingun.com



Prices and delivery times on request.
Technical changes reserved. 04/24_GB

Learn more about
Screw-in test probe



SCREW-IN TEST PROBE

ingun.com