

# Spring-loaded test probe

## GKS-112 305 100 A 5010 M

Item GKS-112-2765

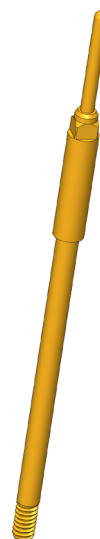


GO TO PRODUCT

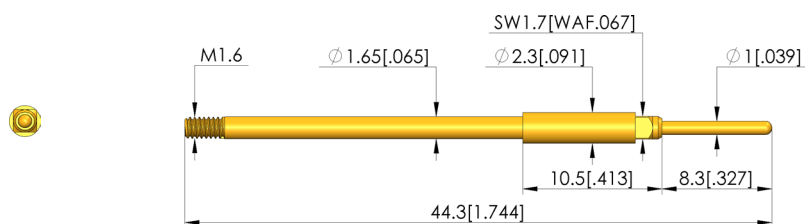
**ingun**<sup>®</sup>

Partner for Future Technology

- Screw-in test probes for applications with possible vibrations or unwanted side and axial forces (migration of the test probe out of the receptacle is reliably prevented)
- The screw-in test probe is securely installed in the KS using a torque screwdriver and bit tool. The required screw-in torque is applied via a square post on the receptacle.
- Stainless steel versions for temperatures from -100 °C up to +200 °C available



1:1



### General data

Product group:  
Sub-product group:  
Series:  
Grid:  
Contacting from:  
Magnetic:  
Installation type:  
Quick-exchange system:  
Adjustable installation height:  
Non-rotating:  
Screw-in torque:  
Compatible receptacle(s):  
Min. temperature:  
Max. temperature:  
RoHS-compliant:

Screw-in test probe  
Screw-in test probe  
GKS-112 M screw-in  
2.54 mm [100 mil]  
Pad, Female connector  
Yes  
Screw-in  
Yes  
No  
No  
3 - 5 cNm [.265 - .442 lbf·in]  
KS-112 M  
- 40 °C [- 104 °F]  
+ 80 °C [+ 176 °F]  
RoHS-3;6c

### Electrical data

Current load capacity / rated current:  
Typical resistance (Ri):

8 A  
<20 mOhm

### Mechanical data

Total length:  
Barrel diameter:  
Maximum stroke:  
Spring pre-load:  
Collar height:  
Spring force at working stroke:  
Recommended working stroke:

44.3 mm [1.74 in]  
1.65 mm [.064 in]  
5.3 mm [.208 in]  
1.49 N [5.35 ozf]  
10  
5 N [17.9 ozf]  
4 mm [.157 in]

### Tip style data

Tip style:  
Tip diameter:  
Tip style surface:  
Tip style material:

05 bullet-nosed (full radius)  
1 mm [.039 in]  
A gold  
3 CuBe

# Spring-loaded test probe

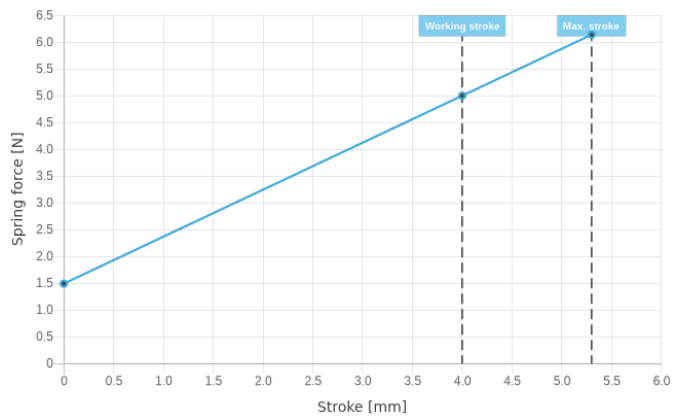
## GKS-112 305 100 A 5010 M

Item GKS-112-2765



**ingun**<sup>®</sup>

Partner for Future Technology



### INGUN Prüfmittelbau GmbH

Max-Stromeyer-Straße 162  
78467, Constance, Germany  
Phone +49 7531 8105-0  
Customer hotline +49 7531 8105-888  
Fax +49 7531 8105-65  
info@ingun.com



Prices and delivery times on request.  
Technical changes reserved. 05/24\_GB

Learn more about  
ICT/FCT Test probes



[ingun.com](https://www.ingun.com)

ICT/FCT TEST PROBES