

# Spring-loaded test probe GKS-112 204 130 R 0807

Item GKS-112-2637

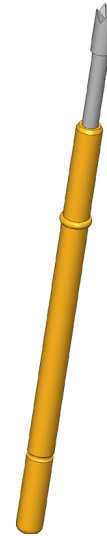
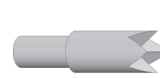


GO TO PRODUCT

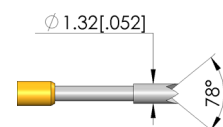
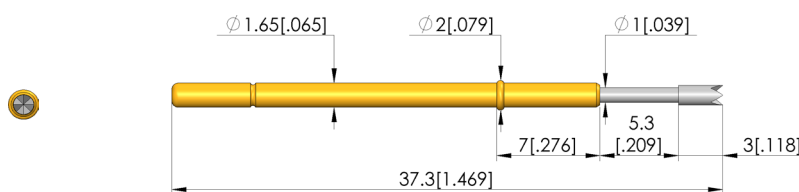
**ingun**<sup>®</sup>

Partner for Future Technology

- Robust test probes with distinctive collar (stop) on the barrel
- Optimum adjustment of the stroke ratios in the test fixture:  
The collar is available in different heights, which, in combination with the receptacles, allows a range of installation heights
- Stainless steel versions for temperatures from -100 °C up to +200 °C available



1:1



## General data

Product group:  
Sub-product group:  
Series:  
Grid:  
Contacting from:  
Magnetic:  
Installation type:  
Quick-exchange system:  
Adjustable installation height:  
Non-rotating:  
Compatible receptacle(s):  
Min. temperature:  
Max. temperature:  
RoHS-compliant:

ICT / FCT (in-circuit test and function test)  
Metric standard  
GKS-112  
2.54 mm [100 mil]  
Pad, pin, posts  
Yes  
Plug-in  
Yes  
No  
No  
KS-112  
- 40 °C [- 104 °F]  
+ 80 °C [+ 176 °F]  
RoHS-3;6a

## Electrical data

Current load capacity / rated current:  
Typical resistance (Ri):

5 A  
<20 mOhm

## Mechanical data

Total length:  
Barrel diameter:  
Maximum stroke:  
Spring pre-load:  
Collar height:  
Spring force at working stroke:  
Recommended working stroke:

37.3 mm [1.46 in]  
1.66 mm [0.065 in]  
5.3 mm [0.208 in]  
0.27 N [0.971 ozf]  
07  
0.8 N [2.87 ozf]  
4 mm [0.157 in]

## Tip style data

Tip style:  
Tip diameter:  
Tip style surface:  
Tip style material:

04 4-point crown  
1.3 mm [0.051 in]  
R rhodium  
2 steel

# Spring-loaded test probe

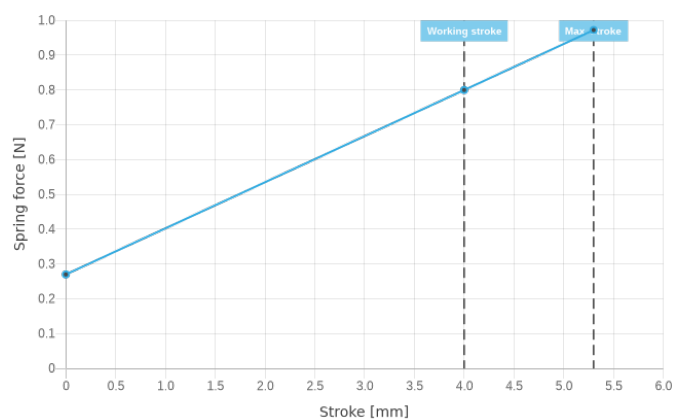
## GKS-112 204 130 R 0807

Item GKS-112-2637



**ingun**<sup>®</sup>

Partner for Future Technology



### INGUN Prüfmittelbau GmbH

Max-Stromeyer-Straße 162  
78467, Constance, Germany  
Phone +49 7531 8105-0  
Customer hotline +49 7531 8105-888  
Fax +49 7531 8105-65  
info@ingun.com



Prices and delivery times on request.

Learn more about  
ICT/FCT Test probes



ICT/FCT TEST PROBES