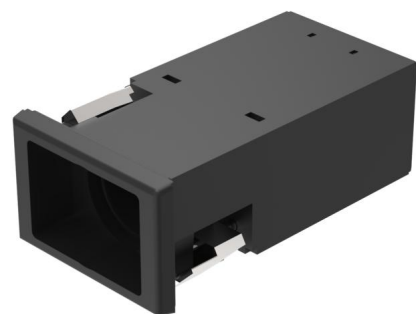


# EAO – Your Expert Partner for Human Machine Interfaces

## 22-215.011 - Illuminated pushbutton - Actuator

### 22-215.011 - Illuminated pushbutton - Actuator



Attention: The preview is based on a sample product. This can differ from your current configuration.

#### Attribute

Design	flush
Front dimension	36 mm x 24 mm
Front form	rectangular
IP front protection	IP65
Contact material	Silver
Front bezel colour	Black
Front bezel material	Plastic
Housing colour	Black
Housing material	Plastic
Lens illumination	optional illuminative
Mounting cut-out	22 mm x 30 mm
Switching action	Momentary
Switching current	10 A
Switching system	Snap-action switching element
Switching voltage	400 V
Terminal	Screw terminal
Weight	0.044 kg
Switching rating	400 V @ 10 A
Contacts	1 NC / 1 NO

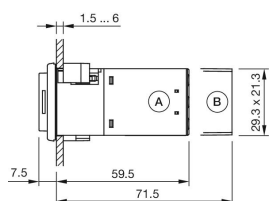
#### Function

Illuminated pushbutton

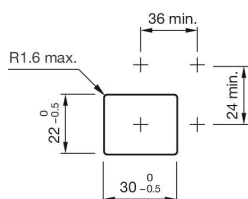
# EAO – Your Expert Partner for Human Machine Interfaces

## 22-215.011 - Illuminated pushbutton - Actuator

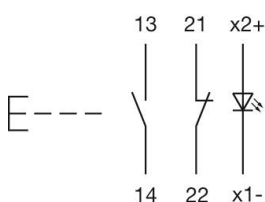
### Dimensions



### Mounting cut-outs



### Wiring diagrams



### Additional information

Contacts: NC = Normally closed, NO = Normally open

Contacts: NC = Normally closed, NO = Normally open