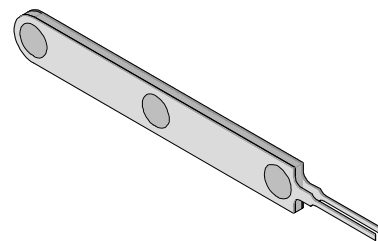




Extractor Tool

## Application Tooling Specification Sheet



Order No. 63813-1200

### FEATURES

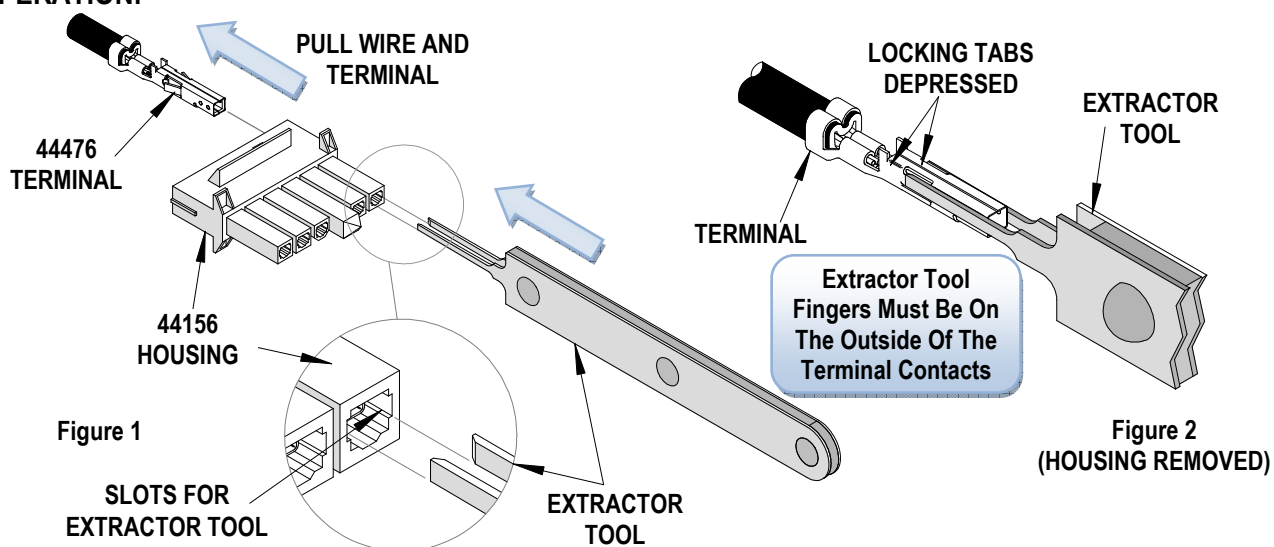
- This tool is designed for the removal of Mini-Fit Jr.® HCS crimped terminals from their housings.

### SCOPE

Products: Mini-Fit® HCS Crimp Terminal, 16-20 AWG.

Housing Series No.	Terminal Series No	Terminal Order No.					
44157	44478-**2*	44478-1221	44478-1122	44478-1121	44478-1222	44478-3121	44478-3122
		44478-3221	44478-3222				
44156	44476	44476-1111	44476-1112	44476-1211	44476-1212	44476-3111	44476-3112
		44476-3211	44476-3212	44476-9901	44476-9902	44476-9903	44476-9904
		44476-9905	44476-9906	44476-9907	44476-9908		
This Extractor Tool is designed <u>only</u> to be used with these Terminal and Housing Combination. All other Applications use Extractor Tool HT60630B (11-03-0044)							

### OPERATION:

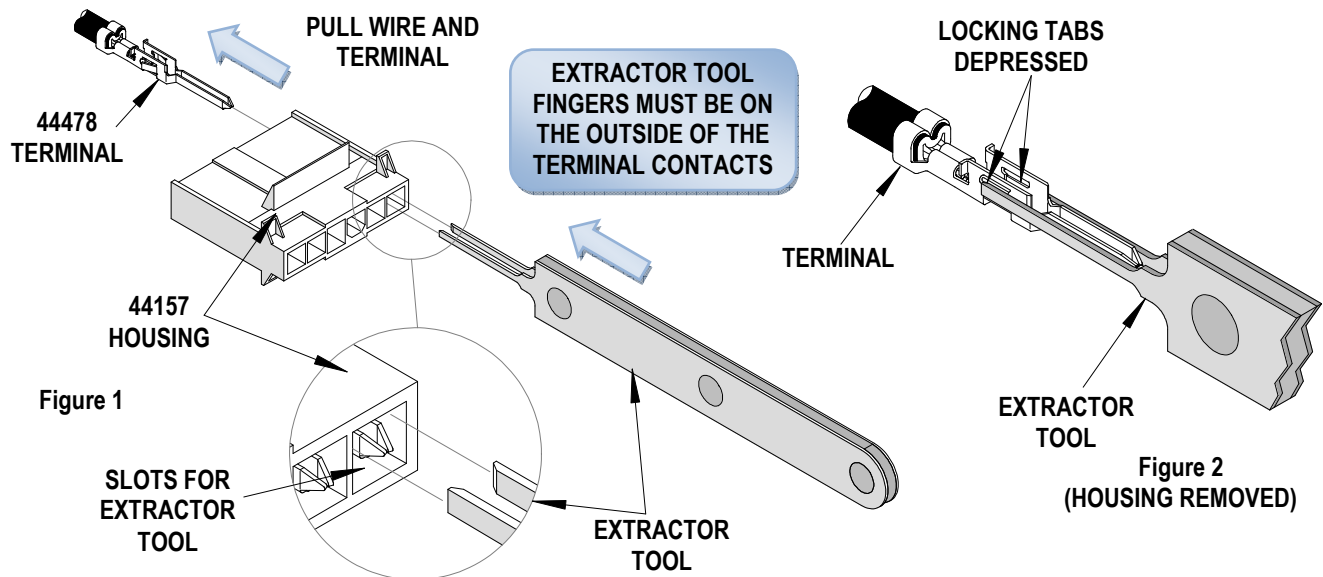


1. Insert the extractor tool into the housing as shown in See Figure 1.
2. Use the slots located on the inside of the housing to guide the extraction tool blades into the housing until contact is made with terminal.
3. Continue to insert the tool always checking to see that the blades of extraction tool are on the outside of the contact as shown in Figure 2.

4. Continue to insert extraction tool into housing until the locking tangs have snapped out of their locked position. If the terminal locking tabs are still not totally depressed, hold on tight to the wire and push it towards the extractor tool, this will completely depress the locking tabs. See Figure 2.
5. Gently pull the terminal wire out from the housing.

## OPERATION:

1. Insert the extractor tool into the housing as shown in See Figure 1.
2. Use the slots located on the inside of the housing to guide the extraction tool blades into the housing until they make contact with terminal.
3. Continue to insert the tool always checking to see that the blades of extraction tool are centered on the terminal nose and on the outside of the contact as shown in Figure 2.



4. Continue to insert extraction tool into housing until the locking tangs have snapped out of their locked position. If the terminal locking tabs are still not totally depressed, hold on tight to the wire and push it towards the extractor tool, this will completely depress the locking tabs. See Figure 2.
5. Gently pull the terminal wire out from the housing.

**NOTE:** When a terminal is removed in this manner the locking tangs are damaged and the terminal is not reusable.

**CAUTION:** This extractor tool should be used to extract the terminal only. Using it for unintended purposes may cause injury or damage to parts. Be careful not to deform the end of the terminal.

**CAUTION:** Molex specifications are valid only when used with Molex terminals, applicators and tooling.

Molex does not offer repair parts for Extractor Tools due to the inexpensive nature of these tools.

## Contact Information

For more information on Molex application tooling please contact Molex at 1-800-786-6539.

Visit our Web site at <http://www.molex.com>