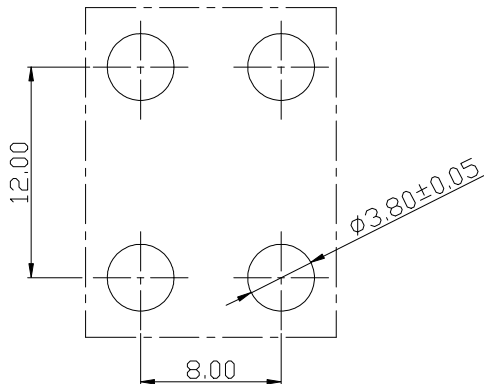
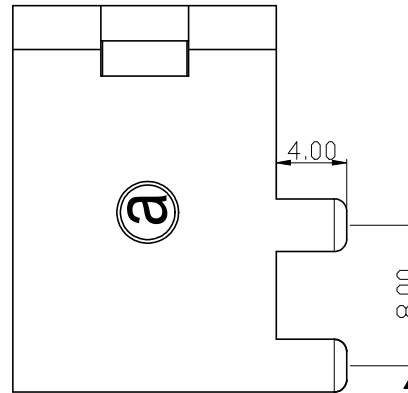
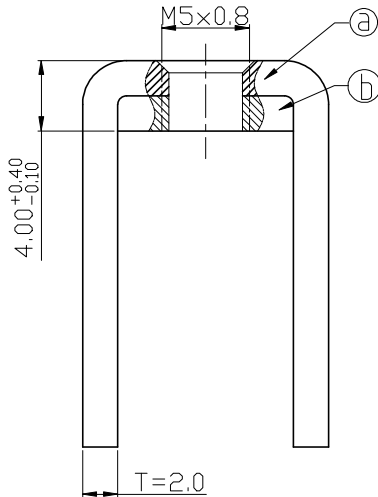
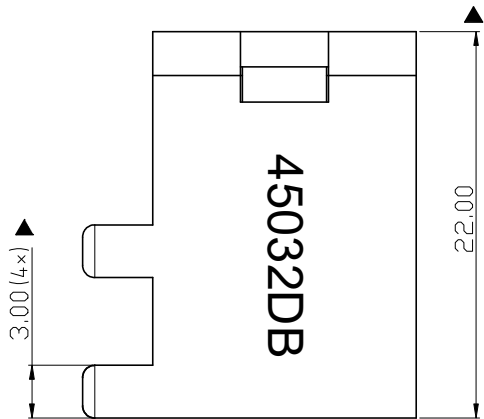
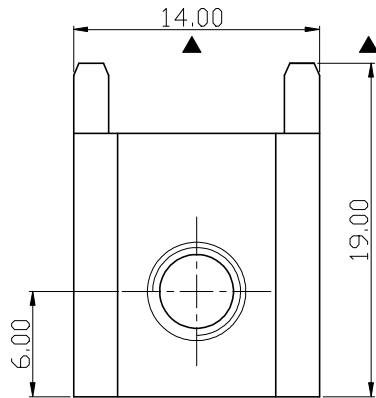


RoHS Compliant



PCB Layout

Rev.	SIGN	DATE	DESCRIPTION	APPROVER
B	—	2024.05.12	The first release	Guoxue
THIS IS CAD DRAWING, DO NOT REVISE MANUALLY!!!				

Technical Specification:

- Current: 120A.
- Torque: 15 lbf.in.
- Mark"▲" is the Critical dimension.

(b)	Spacer	Steel , Matte Tin Plated	1PCS
(a)	terminal	Copper alloy, Matte Tin Plated	1PCS
ITEM	PART NAME	DESCRIPTION	Q'ty

**Amphenol**  
**ANYTEK**

**CUSTOMER COPY**

ALL RIGHTS RESERVED. REPRODUCTION OR ISSUE TO THIRD PARTIES IN ANY FORM WHATEVER IS NOT PERMITTED WITHOUT WRITTEN AUTHORITY FROM THE PROPRIETOR. PROPERTY OF ANYTEK TECHNOLOGY CO., LTD

TITLE		AMT45032DB Conductive Bracket			
PART NO.		AMT0450032DB0000G		DWG NO.	8AMT0004
APPROVED	CHECKED	DESIGNED	DRAWN	CUST NO.	
		Guoxue 2024.05.12	Guoxue 2024.05.12		Tolerance
					>30 ±0.60
					6-30 ±0.40
					0-6 ±0.30
					ANGLES ±1°
				SHEET: 01/01	REV.: B