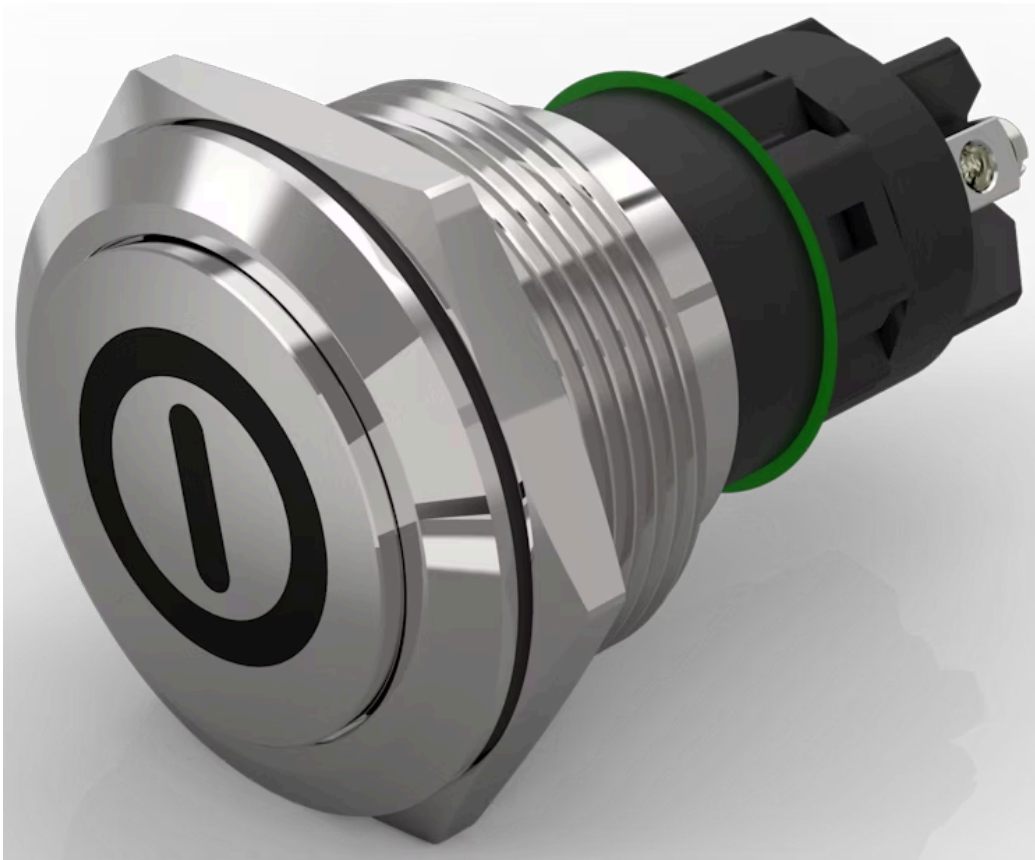


## Pushbutton Ø 22 mm silver contact

82-6162.2000.B001



<https://eao.com/p/82-6162.2000.B001>

Your product:



82-6162.2000.B001  
Pushbutton Ø 22 mm silver contact

FRONT

|                       |                 |
|-----------------------|-----------------|
| Front bezel material: | Stainless steel |
| Front bezel shape:    | flush           |

MOUNTING

|                   |         |
|-------------------|---------|
| Mounting cut-out: | Ø 22 mm |
|-------------------|---------|

OPERATING-/INDICATION PART

|                    |                  |
|--------------------|------------------|
| Lens colour:       | Silver           |
| Lens illumination: | non illuminative |
| Lens material:     | Stainless steel  |
| Lens shape:        | raised           |
| Lens optics:       | opaque           |

ELECTRICAL CHARACTERISTICS

|  |  |                 |
|--|--|-----------------|
| Rated Operational Voltage Ue:            | 250 VAC  |                 |
| Switching voltage and switching current: | according to IEC 60947-5-1 (Silver contacts)               |                 |
|  | Service categorie AC-15                                    |                 |
|  | Voltage  | Current         |
|  | 24 VAC   | 1 A             |
|  | 35 VAC   | 1 A (M12 versio |
|  | 110 VAC  | 1 A             |
|  | 220 VAC  | 0.5 A           |
|  | Switch rating DC service categorie DC-13 (Silver contacts) |                 |
|  | Voltage  | Current         |
|  | 24 VDC   | 0.7 A           |
|  | 35 VDC   | 0.5 A (M12 vers |
|  | 110 VDC  | 0.2 A           |
|  | 220 VDC  | 0.1 A           |

according to UL 508 (Silver contacts)

$\cos\phi$  0,75 ... 0,8

Voltage

120 VAC

240 VAC

24 VAC

Current

5 A

3 A

1 A

|  |  |
|--|--|
| <b>Thermal current I<sub>th</sub>:</b>         | 5 A  |
| <b>Electric strength:</b>                      | 1500 VAC, 50 Hz 1 minute between life terminals and ground |
| <b>Pollution degree:</b>                       | 2, according to EN IEC 60947-1                             |
| <b>Contacts:</b>                               | 1 C  |
| <b>Rated insulation voltage U<sub>i</sub>:</b> | 250 V  |
| <b>Electrical lifetime:</b>                    | 50 000 cycles of operation                                 |

### MECHANICAL CHARACTERISTIC

|                             |                                       |
|-----------------------------|---------------------------------------|
| <b>Switching action:</b>    | Maintained                            |
| <b>Contact material:</b>    | Silver                                |
| <b>Tightening torque:</b>   | 0.5 ... 0.6 Nm, Screw terminal 0.1 Nm |
| <b>Mechanical lifetime:</b> | 500 000 cycles of operation           |
| <b>Terminal:</b>            | Screw terminal                        |
| <b>Operating force:</b>     | 4 N ... 7 N                           |
| <b>Weight:</b>              | 0.02 kg                               |
| <b>Switching system:</b>    | Snap-action switching element         |
| <b>Operating Travel:</b>    | ca. 3 mm                              |

### AMBIENT CONDITION

|                               |  |
|-------------------------------|--|
| <b>Storage temperature:</b>   | – 40 °C ... + 80 °C  |
| <b>Vibration resistance:</b>  | 10 ... 500 Hz, amplitude 1.5 mm p-p according to IEC 60068-2-6 |
| <b>Operating temperature:</b> | – 30 °C ... + 70 °C  |
| <b>Shock resistance:</b>      | Max. 500 m / s <sup>2</sup> as per IEC 60068-2-27              |
| <b>Climate resistance:</b>    | Damp heat, 21 days according to IEC 60512-11                   |

### CERTIFICATE

|                      |   |
|----------------------|---|
| <b>Approbations:</b> | CB, CCC, C UL, UL                               |
| <b>Conformities:</b> | CE, 2011 / 65 / EC (RoHS), 2014 / 35 / EU (LVD) |

## OTHER

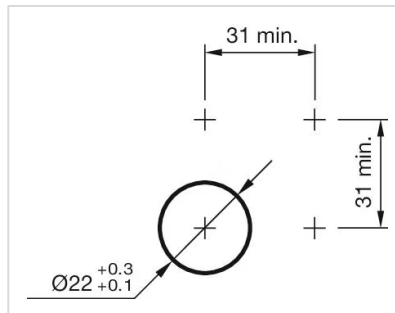
### Short Description:

Pushbutton Ø 22 mm silver contact, Maintained, 1 C, Screw terminal, Stainless steel, ON/OFF, Silver

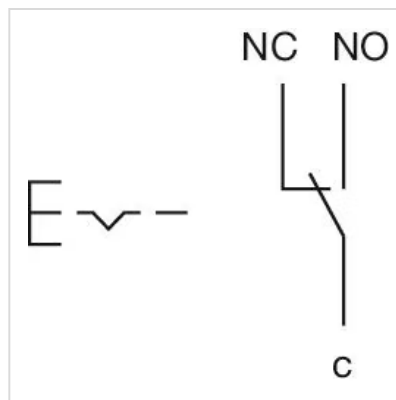
### Symbol:

ON/OFF

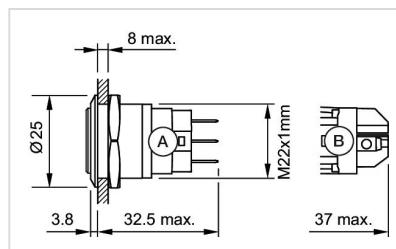
### Mounting cut-outs:



### Wiring diagrams:



### Dimension drawings:



A = Solder terminal  
B = Screw terminal

### Component layouts:

