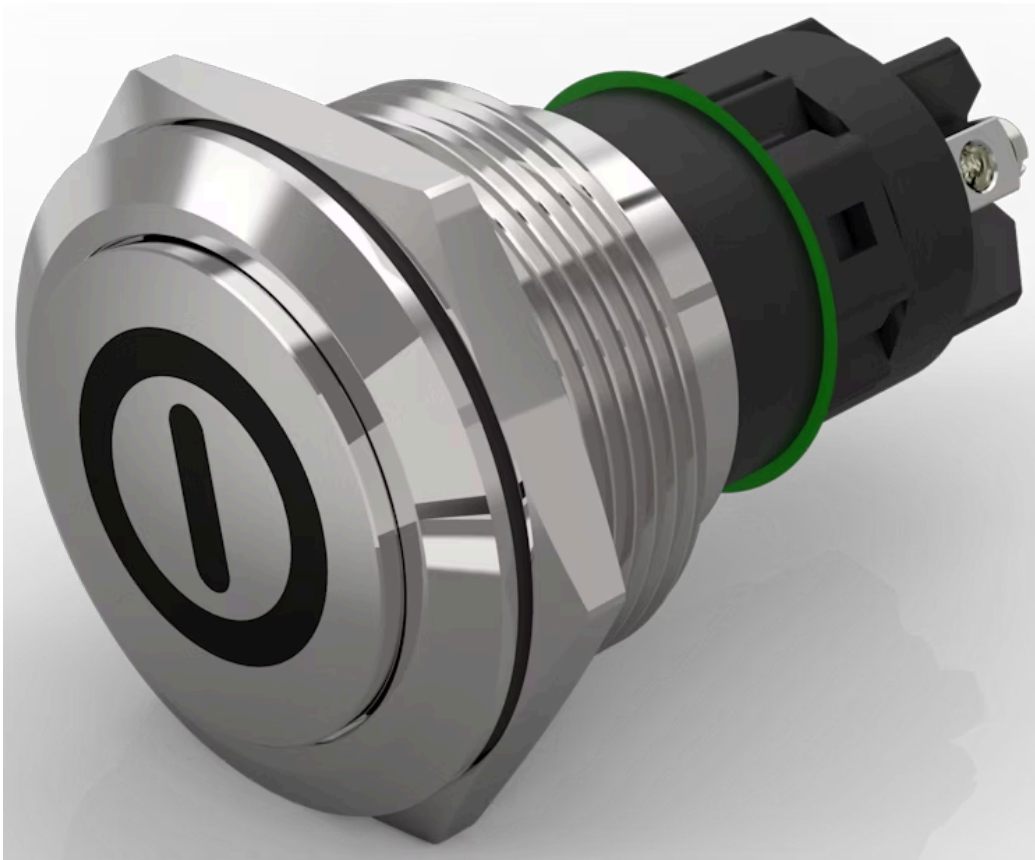


Pushbutton Ø 22 mm silver contact

82-6162.1000.B001



<https://eao.com/p/82-6162.1000.B001>

Your product:



82-6162.1000.B001
Pushbutton Ø 22 mm silver contact

FRONT

Front bezel shape:	flush
Front bezel material:	Stainless steel

MOUNTING

Mounting cut-out:	Ø 22 mm
-------------------	---------

OPERATING-/INDICATION PART

Lens shape:	flush
Lens optics:	opaque
Lens illumination:	non illuminative
Lens material:	Stainless steel
Lens colour:	Silver

ELECTRICAL CHARACTERISTICS

Rated Operational Voltage Ue:	250 VAC		
Switching voltage and switching current:	according to IEC 60947-5-1 (Silver contacts)		
	Service categorie AC-15		
	Voltage	Current	
	24 VAC	1 A	
	35 VAC	1 A (M12 version)	
	110 VAC	1 A	
	220 VAC	0.5 A	
	Switch rating DC service categorie DC-13 (Silver contacts)		
	Voltage	Current	
	24 VDC	0.7 A	
	35 VDC	0.5 A (M12 version)	
	110 VDC	0.2 A	
	220 VDC	0.1 A	

according to UL 508 (Silver contacts)

$\cos\phi$ 0,75 ... 0,8

Voltage

120 VAC

240 VAC

24 VAC

Current

5 A

3 A

1 A

Electrical lifetime:	50 000 cycles of operation
Pollution degree:	2, according to EN IEC 60947-1
Thermal current I_{th}:	5 A
Rated insulation voltage U_i:	250 V
Electric strength:	1500 VAC, 50 Hz 1 minute between life terminals and ground
Contacts:	1 C

MECHANICAL CHARACTERISTIC

Switching action:	Momentary
Contact material:	Silver
Tightening torque:	0.5 ... 0.6 Nm, Screw terminal 0.1 Nm
Weight:	0.02 kg
Terminal:	Screw terminal
Switching system:	Snap-action switching element
Operating Travel:	ca. 3 mm
Mechanical lifetime:	1 Mio. cycles of operation
Operating force:	4 N ... 7 N

AMBIENT CONDITION

Shock resistance:	Max. 500 m / s ² as per IEC 60068-2-27
Operating temperature:	– 30 °C ... + 70 °C
Vibration resistance:	10 ... 500 Hz, amplitude 1.5 mm p-p according to IEC 60068-2-6
Storage temperature:	– 40 °C ... + 80 °C
Climate resistance:	Damp heat, 21 days according to IEC 60512-11

CERTIFICATE

Conformities:	CE, 2011 / 65 / EC (RoHS), 2014 / 35 / EU (LVD)
Approbations:	CB, CCC, C UL, UL

OTHER

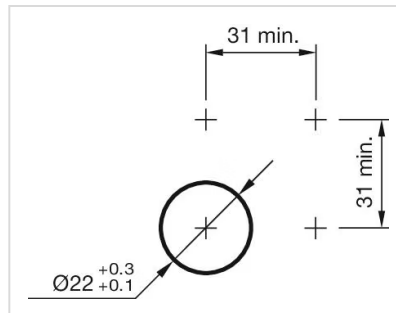
Short Description:

Pushbutton Ø 22 mm silver contact, Momentary, 1 C, Screw terminal, Stainless steel, ON/OFF, Silver

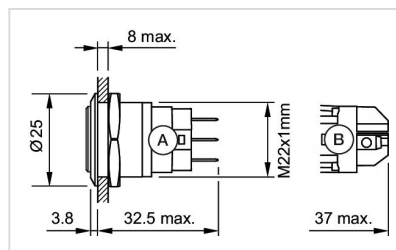
Symbol:

ON/OFF

Mounting cut-outs:

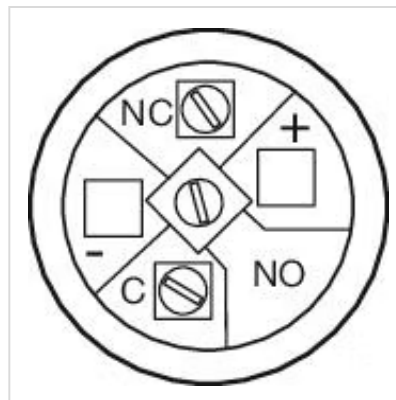


Dimension drawings:



A = Solder terminal
B = Screw terminal

Component layouts:



Wiring diagrams:

