

Illuminated pushbutton Ø 22 mm stainless steel 304, with symbol

82-6151.1A24.B006



<https://eao.com/p/82-6151.1A24.B006>

Your product:



82-6151.1A24.B006

Illuminated pushbutton Ø 22 mm
stainless steel 304, with symbol

FRONT

Front bezel material: Stainless steel

MOUNTING

Mounting cut-out: Ø 22 mm

OPERATING-/INDICATION PART

Illumination colour: Green

Lens illumination: illuminative

Lens shape: flush

Lens optics: opaque

Shape of illumination: Symbol

Lens material: Plastic metalised

Lens colour: Silver

ELECTRICAL CHARACTERISTICS

Rated insulation voltage U_i : 250 V

Thermal current I_{th} : 5 A

Operating voltage: 24 V DC

Contacts: 1 C

Switching voltage and switching current:

according to IEC 60947-5-1 (Silver contacts)

Service categorie AC-15

Voltage

24 VAC

35 VAC

110 VAC

220 VAC

Current

1 A

1 A (M12 version)

1 A

0.5 A

Switch rating DC service categorie DC-13 (Silver contacts)

Voltage

24 VDC

35 VDC

110 VDC

220 VDC

Current

0.7 A

0.5 A (M12 version)

0.2 A

0.1 A

according to UL 508 (Silver contacts)

$\cos\phi$ 0,75 ... 0,8

Voltage

120 VAC

240 VAC

24 VAC

Current

5 A

3 A

1 A

Pollution degree:

2, according to EN IEC 60947-1

Rated Operational Voltage U_e :

250 VAC

Electric strength:

1500 VAC, 50 Hz 1 minute between life terminals and ground

Electrical lifetime:

50 000 cycles of operation

MECHANICAL CHARACTERISTIC

Mechanical lifetime:

1 Mio. cycles of operation

Contact material:

Silver

Tightening torque:

0.5 ... 0.6 Nm

Switching action:

Momentary

Operating force:

4 N ... 7 N

Switching system:

Snap-action switching element

Weight:

0.025 kg

Operating Travel:

ca. 3 mm

Terminal:

Soldering terminal, 2.8 x 0.5 mm

AMBIENT CONDITION

Storage temperature:

- 40 °C ... + 80 °C

Operating temperature:

- 30 °C ... + 70 °C

Climate resistance:

Damp heat, 21 days according to IEC 60512-11

Shock resistance:

Max. 500 m / s² as per IEC 60068-2-27

Vibration resistance:

10 ... 500 Hz, amplitude 1.5 mm p-p according to IEC 60068-2-6

CERTIFICATE

Conformities: CE, 2011 / 65 / EC (RoHS), 2014 / 35 / EU (LVD)

Approbations: CB, CCC, C UL, UL

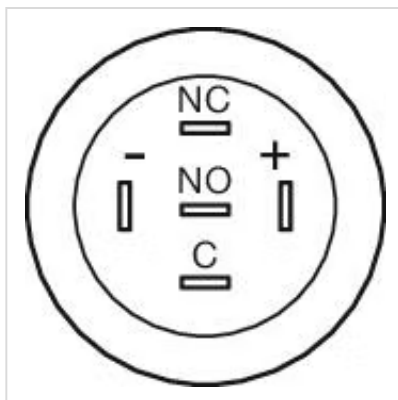
OTHER

Kind of illumination: Single-LED

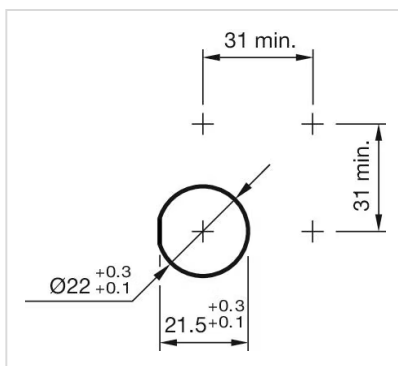
Short Description: Illuminated pushbutton Ø 22 mm stainless steel 304, with symbol, Momentary, 24 V DC, 1 C, Soldering terminal, 2.8 x 0.5 mm, Stainless steel, Green, Door open, Silver

Symbol: Door open

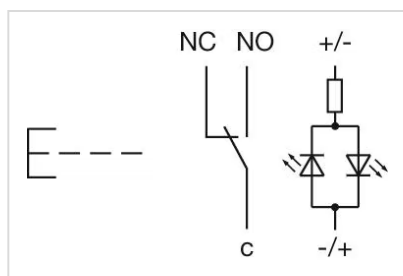
Component layouts:



Mounting cut-outs:



Wiring diagrams:



Dimension drawings:

