

Illuminated pushbutton Ø 22 mm silver contact

82-6151.1124.B001



<https://eao.com/p/82-6151.1124.B001>

Your product:



82-6151.1124.B001
Illuminated pushbutton Ø
22 mm silver contact

FRONT

Front bezel material: Stainless steel

MOUNTING

Mounting cut-out: Ø 22 mm

OPERATING-/INDICATION PART

Illumination colour: Blue

Lens material: Stainless steel

Shape of illumination: Ring

Lens shape: flush

Lens optics: opaque

Lens colour: Silver

Lens illumination: illuminative

ELECTRICAL CHARACTERISTICS

Thermal current I_{th}: 5 A

Rated insulation voltage U_i: 250 V

Operating voltage: 24 V AC/DC

Switching voltage and switching current:

according to IEC 60947-5-1 (Silver contacts)	
Service categorie AC-15	
Voltage	Current
24 VAC	1 A
35 VAC	1 A (M12 version)
110 VAC	1 A
220 VAC	0.5 A
Switch rating DC service categorie DC-13 (Silver contacts)	
Voltage	Current
24 VDC	0.7 A
35 VDC	0.5 A (M12 version)
110 VDC	0.2 A
220 VDC	0.1 A

according to UL 508 (Silver contacts)	
cosφ 0,75 ... 0,8	
Voltage	Current
120 VAC	5 A
240 VAC	3 A
24 VAC	1 A

Electric strength:	1500 VAC, 50 Hz 1 minute between life terminals and ground
Pollution degree:	2, according to EN IEC 60947-1
Rated Operational Voltage Ue:	250 VAC
Contacts:	1 C
Electrical lifetime:	50 000 cycles of operation

MECHANICAL CHARACTERISTIC

Contact material:	Silver
Mechanical lifetime:	1 Mio. cycles of operation
Tightening torque:	0.5 ... 0.6 Nm
Weight:	0.018 kg
Terminal:	Soldering terminal, 2.8 x 0.5 mm
Switching system:	Snap-action switching element
Operating force:	4 N ... 7 N
Switching action:	Momentary
Operating Travel:	ca. 3 mm

AMBIENT CONDITION

Storage temperature:	- 40 °C ... + 80 °C
Vibration resistance:	10 ... 500 Hz, amplitude 1.5 mm p-p according to IEC 60068-2-6
Climate resistance:	Damp heat, 21 days according to IEC 60512-11
Operating temperature:	

– 30 °C ... + 70 °C

Shock resistance:

Max. 500 m / s² as per IEC 60068-2-27

CERTIFICATE

Conformities:

CE, 2011 / 65 / EC (RoHS), 2014 / 35 / EU (LVD)

Approbations:

CB, CCC, C UL, UL

OTHER

Symbol:

ON/OFF

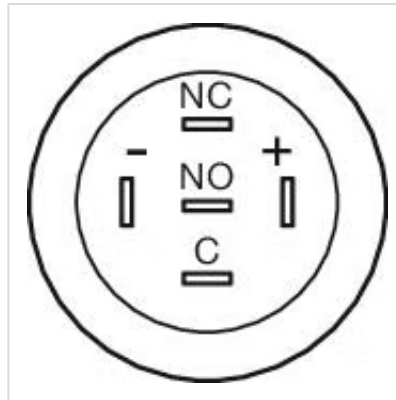
Short Description:

Illuminated pushbutton Ø 22 mm silver contact, Momentary, 24 V AC/DC, 1 C,
Soldering terminal, 2.8 x 0.5 mm, Stainless steel, Blue, ON/OFF, Silver

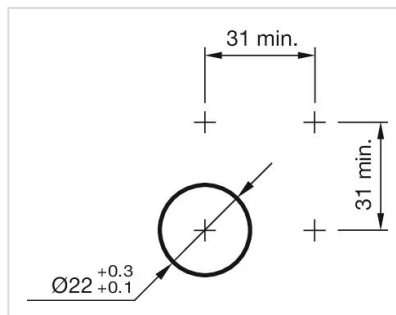
Kind of illumination:

Single-LED

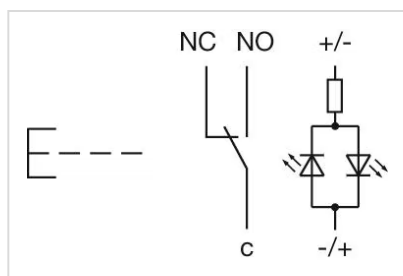
Component layouts:



Mounting cut-outs:



Wiring diagrams:



Dimension drawings:

