

Illuminated pushbutton Ø 19 mm silver contact

82-5152.11A4



<https://eao.com/p/82-5152.11A4>

Your product:



82-5152.11A4

Illuminated pushbutton Ø
19 mm silver contact

FRONT

Front bezel material: Stainless steel

Front bezel shape: flush

MOUNTING

Mounting cut-out: Ø 19 mm

OPERATING-/INDICATION PART

Lens optics: opaque

Lens shape: flush

Lens illumination: illuminative

Lens colour: Silver

Lens material: Stainless steel

Shape of illumination: Ring

Illumination colour: Red / Green

ELECTRICAL CHARACTERISTICS

Electrical lifetime: 50 000 cycles of operation

Electric strength: 1500 VAC, 50 Hz 1 minute between life terminals and ground

Switching voltage and switching current:

according to IEC 60947-5-1 (Silver contacts)	
Service categorie AC-15	
Voltage	Current
24 VAC	1 A
35 VAC	1 A (M12 version)
110 VAC	1 A
220 VAC	0.5 A
Switch rating DC service categorie DC-13 (Silver contacts)	
Voltage	Current
24 VDC	0.7 A
35 VDC	0.5 A (M12 version)
110 VDC	0.2 A
220 VDC	0.1 A

according to UL 508 (Silver contacts)	
cosφ 0,75 ... 0,8	
Voltage	Current
120 VAC	5 A
240 VAC	3 A
24 VAC	1 A

Operating voltage:	24 V DC
Pollution degree:	2, according to EN IEC 60947-1
Thermal current Ith:	5 A
Rated insulation voltage Ui:	250 V
Contacts:	1 C
Rated Operational Voltage Ue:	250 VAC

MECHANICAL CHARATERISTIC

Terminal:	Screw terminal
Weight:	0.018 kg
Switching action:	Momentary
Contact material:	Silver
Mechanical lifetime:	1 Mio. cycles of operation
Operating force:	4 N ... 7 N
Tightening torque:	0.5 ... 0.6 Nm
Switching system:	Snap-action switching element
Operating Travel:	ca. 3 mm

AMBIENT CONDITION

Vibration resistance:	10 ... 500 Hz, amplitude 1.5 mm p-p according to IEC 60068-2-6
Climate resistance:	Damp heat, 21 days according to IEC 60512-11
Operating temperature:	

– 30 °C ... + 70 °C

Shock resistance:

Max. 500 m / s² as per IEC 60068-2-27

Storage temperature:

– 40 °C ... + 80 °C

CERTIFICATE

Conformities:

CE, 2011 / 65 / EC (RoHS), 2014 / 35 / EU (LVD)

Approbations:

CB, CCC, C UL, UL

OTHER

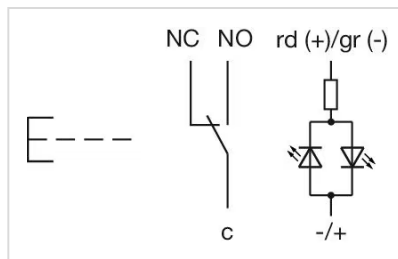
Kind of illumination:

Bi-colour-LED

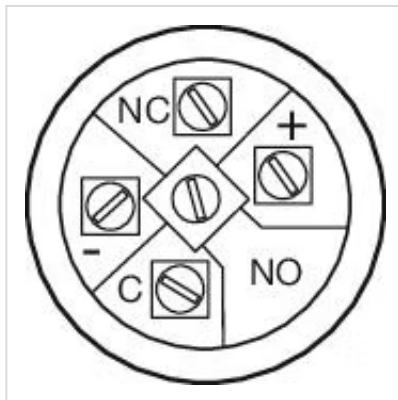
Short Description:

Illuminated pushbutton Ø 19 mm silver contact, Momentary, 24 V DC, 1 C, Screw terminal, Stainless steel, Red / Green, Silver

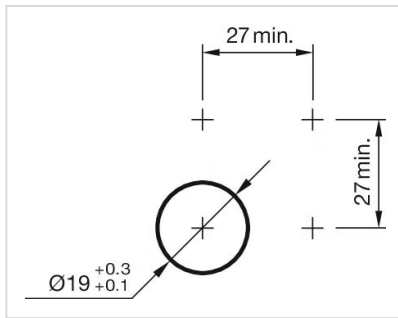
Wiring diagrams:



Component layouts:



Mounting cut-outs:



Dimension drawings:



A = Solder terminal
B = Screw terminal