

Illuminated pushbutton Ø 19 mm silver contact

82-5152.1114.B002



<https://eao.com/p/82-5152.1114.B002>

Your product:



82-5152.1114.B002

Illuminated pushbutton Ø 19 mm silver contact

FRONT

Front bezel shape:	flush
Front bezel material:	Stainless steel

MOUNTING

Mounting cut-out:	Ø 19 mm
-------------------	---------

OPERATING-/INDICATION PART

Lens colour:	Silver
Lens material:	Stainless steel
Lens illumination:	illuminative
Shape of illumination:	Ring
Lens optics:	opaque
Lens shape:	flush
Illumination colour:	Red

ELECTRICAL CHARACTERISTICS

Electric strength:	1500 VAC, 50 Hz 1 minute between life terminals and ground
Thermal current I _{th} :	5 A
Rated Operational Voltage U _e :	250 VAC
Contacts:	1 C
Rated insulation voltage U _i :	250 V
Switching voltage and switching current:	

according to IEC 60947-5-1 (Silver contacts)

Service categorie AC-15

Voltage

24 VAC

35 VAC

110 VAC

220 VAC

Current

1 A

1 A (M12 version)

1 A

0.5 A

Switch rating DC service categorie DC-13 (Silver contacts)

Voltage

24 VDC

35 VDC

110 VDC

220 VDC

Current

0.7 A

0.5 A (M12 version)

0.2 A

0.1 A

according to UL 508 (Silver contacts)

$\cos\phi$ 0,75 ... 0,8

Voltage

120 VAC

240 VAC

24 VAC

Current

5 A

3 A

1 A

Pollution degree: 2, according to EN IEC 60947-1

Operating voltage: 24 V DC

Electrical lifetime: 50 000 cycles of operation

MECHANICAL CHARACTERISTIC

Weight: 0.018 kg

Terminal: Screw terminal

Switching system: Snap-action switching element

Operating Travel: ca. 3 mm

Switching action: Momentary

Operating force: 4 N ... 7 N

Mechanical lifetime: 1 Mio. cycles of operation

Contact material: Silver

Tightening torque: 0.5 ... 0.6 Nm, Screw terminal 0.1 Nm

AMBIENT CONDITION

Vibration resistance: 10 ... 500 Hz, amplitude 1.5 mm p-p according to IEC 60068-2-6

Operating temperature: – 30 °C ... + 70 °C

Shock resistance: Max. 500 m / s² as per IEC 60068-2-27

Climate resistance: Damp heat, 21 days according to IEC 60512-11

Storage temperature: – 40 °C ... + 80 °C

CERTIFICATE

Conformities:

CE, 2011 / 65 / EC (RoHS), 2014 / 35 / EU (LVD)

Approbations:

CB, CCC, C UL, UL

OTHER

Kind of illumination:

Single-LED

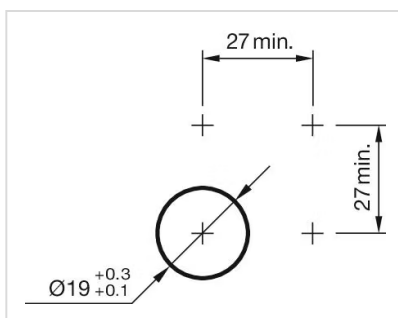
Short Description:

Illuminated pushbutton Ø 19 mm silver contact, Momentary, 24 V DC, 1 C, Screw terminal, Stainless steel, Red, Standby, Silver

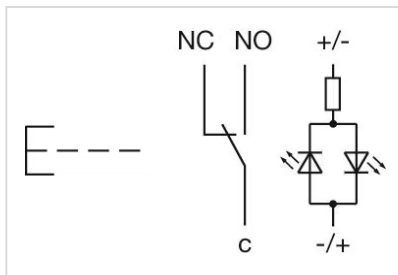
Symbol:

Standby

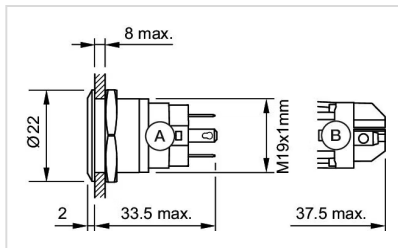
Mounting cut-outs:



Wiring diagrams:



Dimension drawings:



A = Solder terminal
B = Screw terminal

Component layouts:

