

## Pushbutton Ø 16 mm silver contact

82-4172.1000



<https://eao.com/p/82-4172.1000>

Your product:



82-4172.1000  
Pushbutton Ø 16 mm silver contact

FRONT

Front bezel material:	Stainless steel
Front bezel shape:	flush

MOUNTING

Mounting cut-out:	Ø 16 mm
-------------------	---------

OPERATING-/INDICATION PART

Lens optics:	opaque
Lens illumination:	non illuminative
Lens material:	Stainless steel
Lens colour:	Silver
Lens shape:	convex

ELECTRICAL CHARACTERISTICS

Contacts:	1 C
Rated insulation voltage Ui:	250 V
Switching voltage and switching current:	according to IEC 60947-5-1 (Silver contacts) Service categorie AC-15 Voltage 24 VAC 35 VAC 110 VAC 220 VAC Switch rating DC service categorie DC-13 (Silver contacts) Voltage 24 VDC 35 VDC 110 VDC 220 VDC
	Current 1 A 1 A (M12 versio 1 A 0.5 A Current 0.7 A 0.5 A (M12 vers 0.2 A 0.1 A

according to UL 508 (Silver contacts)

cos $\phi$  0,75 ... 0,8

Voltage

120 VAC

240 VAC

24 VAC

Current

5 A

3 A

1 A

<b>Pollution degree:</b>	2, according to EN IEC 60947-1
<b>Electric strength:</b>	1500 VAC, 50 Hz 1 minute between life terminals and ground
<b>Electrical lifetime:</b>	50 000 cycles of operation
<b>Rated Operational Voltage Ue:</b>	250 VAC
<b>Thermal current Ith:</b>	5 A

## MECHANICAL CHARACTERISTIC

<b>Switching action:</b>	Momentary
<b>Terminal:</b>	Screw terminal
<b>Weight:</b>	0.019 kg
<b>Mechanical lifetime:</b>	1 Mio. cycles of operation
<b>Operating Travel:</b>	ca. 3 mm
<b>Operating force:</b>	4 N ... 7 N
<b>Switching system:</b>	Snap-action switching element
<b>Contact material:</b>	Silver
<b>Tightening torque:</b>	0.5 ... 0.6 Nm, Screw terminal 0.1 Nm

## AMBIENT CONDITION

<b>Storage temperature:</b>	– 40 °C ... + 80 °C
<b>Operating temperature:</b>	– 30 °C ... + 70 °C
<b>Vibration resistance:</b>	10 ... 500 Hz, amplitude 1.5 mm p-p according to IEC 60068-2-6
<b>Climate resistance:</b>	Damp heat, 21 days according to IEC 60512-11
<b>Shock resistance:</b>	Max. 500 m / s <sup>2</sup> as per IEC 60068-2-27

## CERTIFICATE

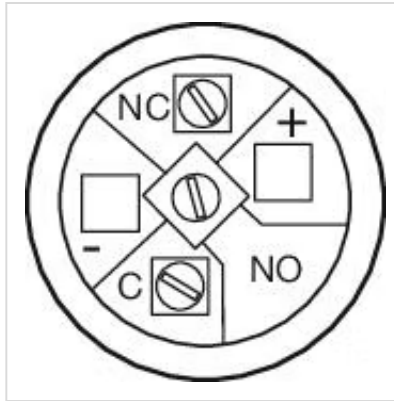
<b>Conformities:</b>	CE, 2011 / 65 / EC (RoHS), 2014 / 35 / EU (LVD)
<b>Approbations:</b>	CB, CCC, C UL, UL

## OTHER

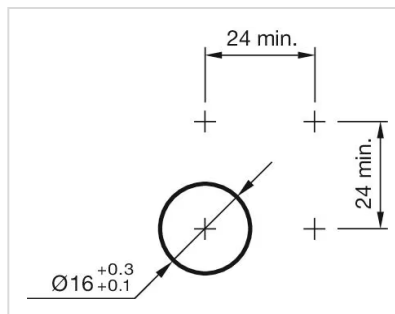
### Short Description:

Pushbutton Ø 16 mm silver contact, Momentary, 1 C, Screw terminal, Stainless steel, Silver

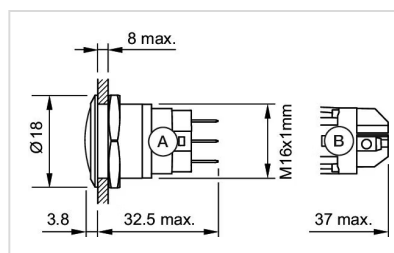
### Component layouts:



### Mounting cut-outs:



### Dimension drawings:



A = Solder terminal  
B = Screw terminal

### Wiring diagrams:

