

Pushbutton Ø 16 mm silver contact

82-4171.1000



<https://eao.com/p/82-4171.1000>

Your product:



82-4171.1000
Pushbutton Ø 16 mm silver contact

FRONT

Front bezel material:	Stainless steel
Front bezel shape:	flush

MOUNTING

Mounting cut-out:	Ø 16 mm
-------------------	---------

OPERATING-/INDICATION PART

Lens material:	Stainless steel
Lens illumination:	non illuminative
Lens shape:	convex
Lens colour:	Silver
Lens optics:	opaque

ELECTRICAL CHARACTERISTICS

Electrical lifetime:	50 000 cycles of operation
Pollution degree:	2, according to EN IEC 60947-1

Switching voltage and switching current:	according to IEC 60947-5-1 (Silver contacts)	
	Service categorie AC-15	
	Voltage	Current
	24 VAC	1 A
	35 VAC	1 A (M12 versio
	110 VAC	1 A
	220 VAC	0.5 A
	Switch rating DC service categorie DC-13 (Silver contacts)	
	Voltage	Current
	24 VDC	0.7 A
	35 VDC	0.5 A (M12 vers
	110 VDC	0.2 A
	220 VDC	0.1 A

according to UL 508 (Silver contacts)

$\cos\phi$ 0,75 ... 0,8

Voltage

120 VAC

240 VAC

24 VAC

Current

5 A

3 A

1 A

Thermal current I_{th}:	5 A
Rated Operational Voltage U_e:	250 VAC
Rated insulation voltage U_i:	250 V
Contacts:	1 C
Electric strength:	1500 VAC, 50 Hz 1 minute between line terminals and ground

MECHANICAL CHARACTERISTIC

Operating Travel:	ca. 3 mm
Switching action:	Momentary
Contact material:	Silver
Weight:	0.019 kg
Switching system:	Snap-action switching element
Mechanical lifetime:	1 Mio. cycles of operation
Tightening torque:	0.5 ... 0.6 Nm
Terminal:	Soldering terminal, 2.8 x 0.5 mm
Operating force:	4 N ... 7 N

AMBIENT CONDITION

Storage temperature:	– 40 °C ... + 80 °C
Climate resistance:	Damp heat, 21 days according to IEC 60512-11
Shock resistance:	Max. 500 m / s ² as per IEC 60068-2-27
Operating temperature:	– 30 °C ... + 70 °C
Vibration resistance:	10 ... 500 Hz, amplitude 1.5 mm p-p according to IEC 60068-2-6

CERTIFICATE

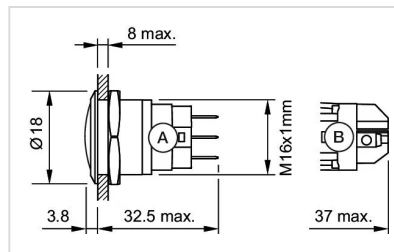
Conformities:	CE, 2011 / 65 / EC (RoHS), 2014 / 35 / EU (LVD)
Approbations:	CB, CCC, C UL, UL

OTHER

Short Description:

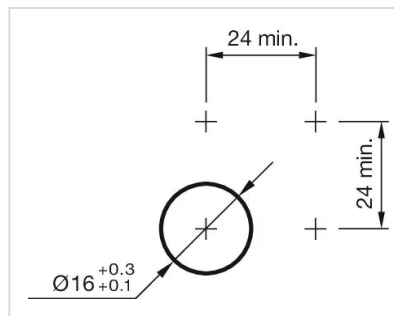
Pushbutton Ø 16 mm silver contact, Momentary, 1 C, Soldering terminal, 2.8 x 0.5 mm, Stainless steel, Silver

Dimension drawings:

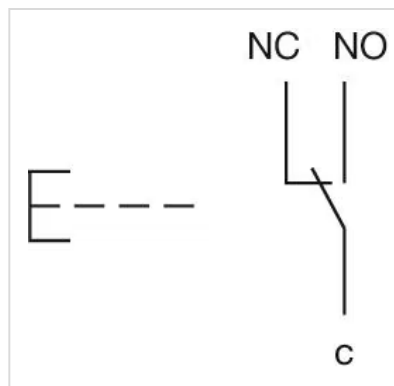


A = Solder terminal
B = Screw terminal

Mounting cut-outs:



Wiring diagrams:



Component layouts:

