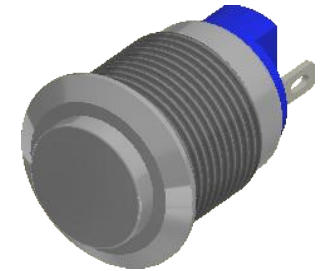


Ø9.00
[.354 in]

Ø14.00
[.551 in]

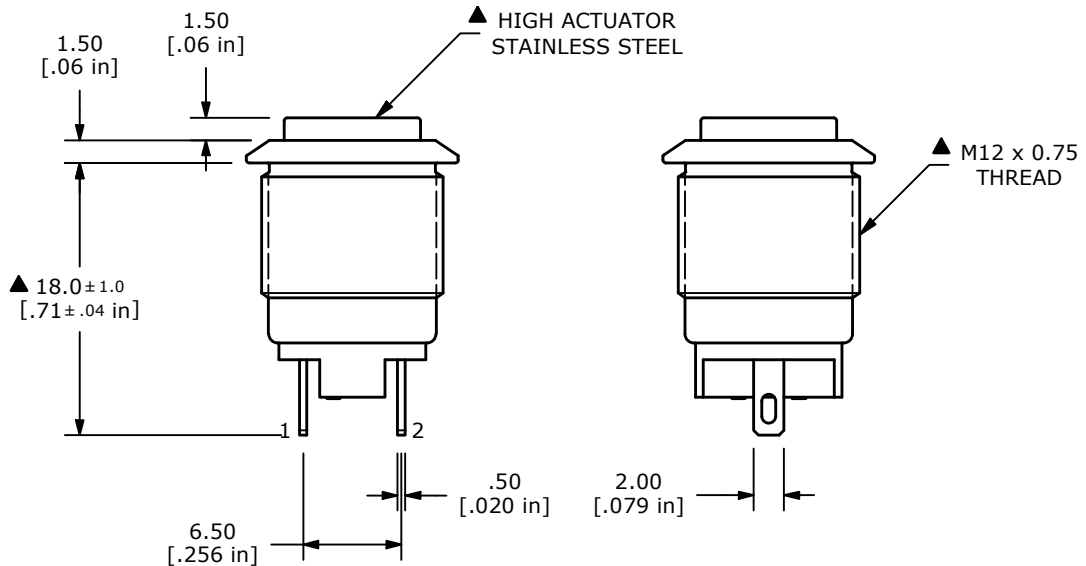
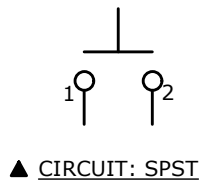
▲ HOUSING
STAINLESS STEEL



▲ SWITCH FUNCTION

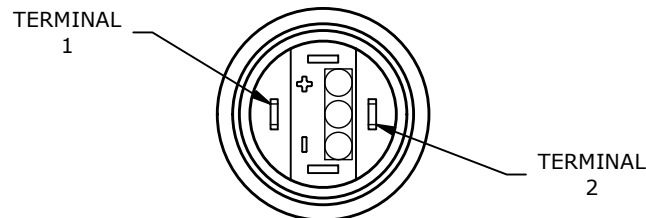
POS. 1	POS. 2
OFF	(ON)
OPEN	1-2


(ON) = MOMENTARY



NOTE:

1. ALL DIMENSIONS IN MM [INCH]
2. GENERAL TOLERANCE: X.X = ± 0.4
X.XX = ± 0.25
3. TERMINAL NOS. FOR REF. ONLY
4. RATING: 2A @ 36VDC
5. CONTACT RESISTANCE: 50mΩ MAX. @ 1A 12VDC
6. INSULATION RESISTANCE: 1,000MΩ @ 500VDC
7. DIELECTRIC STRENGTH: 2,000VAC MIN. FOR 1 MINUTE
8. ELECTRICAL LIFE: 200,000 CYCLES
9. CONTACT MATERIAL: SILVER
10. OPERATING TEMPERATURE: -20°C TO 55°C
11. INGRESS PROTECTION: IP65
12. ▲ DENOTES CRITICAL PARAMETER
13. HARDWARE INCLUDED: HEX NUT AND O-RING (NOT SHOWN)



E	24581	HOUSING UPDATE	11/9/20	JM	 E-SWITCH®			
D	23191	UPDATED THREAD FROM ..0.5 TO ..0.75	1/29/18	MJR				
C	22865	UPDATED RATING TO 2A @ 36VDC	5/26/17	MJR	TITLE PV0H240SS			
REV	PCR NO	DESCRIPTION	DATE	BY	SCALE 2:1	DATE 2/18/2016	DR RC	DWG 52-PV0H240SS
THE INFORMATION CONTAINED IN THIS DOCUMENT IS PROPRIETARY TO E-SWITCH AND IS NOT TO BE COPIED OR TRANSFERRED								REV E