

Materials:

Socket housing: CuZn

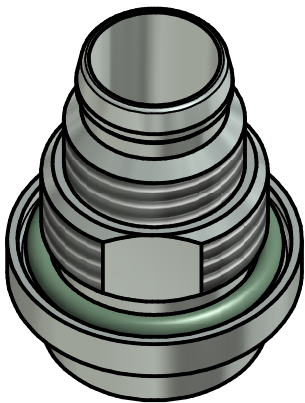
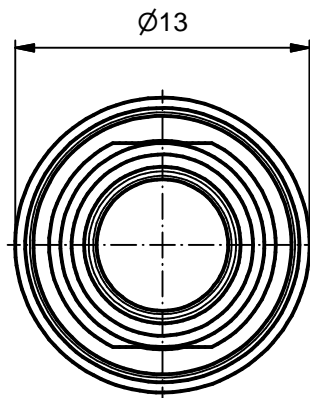
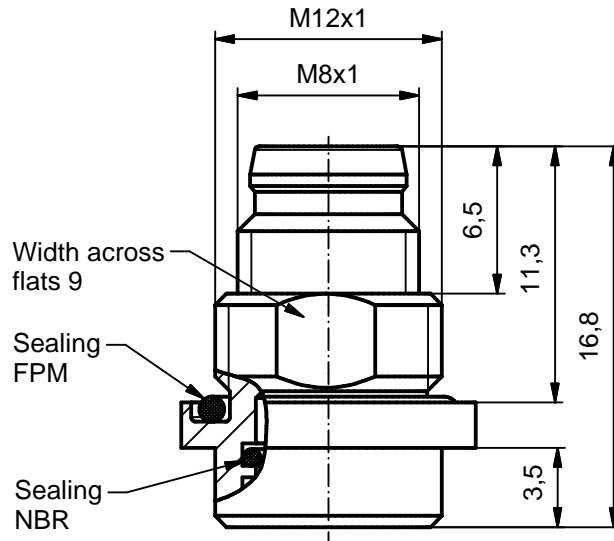
Housing surface: nickel plated

Sealing: FPM, NBR

Installation specification:

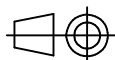
Recommended torque: 1-1,2 Nm

Installation hole: See fig.1 42K1A1119



DO NOT ALTER CAD DRAWING BY HAND

RoHS & REACH compliant

Index: a 25.04.16 rbo Ä6018
Installation tool deleted, title modified

dim. in mm

date

name

drawn

17.08.15

Gitinow

appd.

17.08.15

Schramm

title:

Housing male M12x1 H10,
back panel mounting

dwg no:

42K1A1085

part no:

42-01488

general tolerance: 0 ± 0,50mm
0,0 ± 0,25mm
0,00 ± 0,10mm
+ ± 5°THIS DRAWING MAY NOT BE COPIED OR REPRODUCED IN ANY WAY, AND
MAY NOT BE PASSED ON TO A THIRD PARTY WITHOUT WRITTEN PERMISSION.
OWNERSHIP AND COPYRIGHT OF CONEC GmbH**CONEC®**