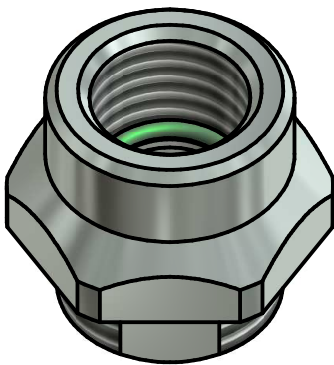
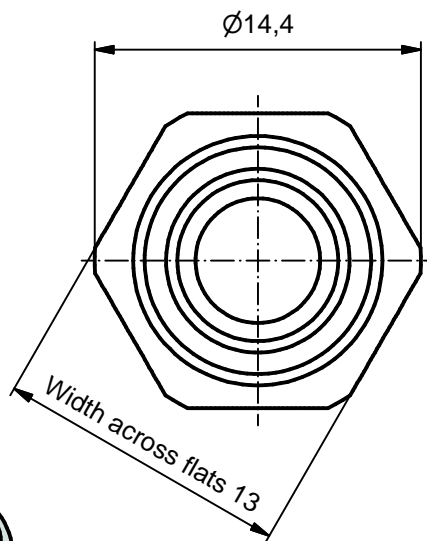
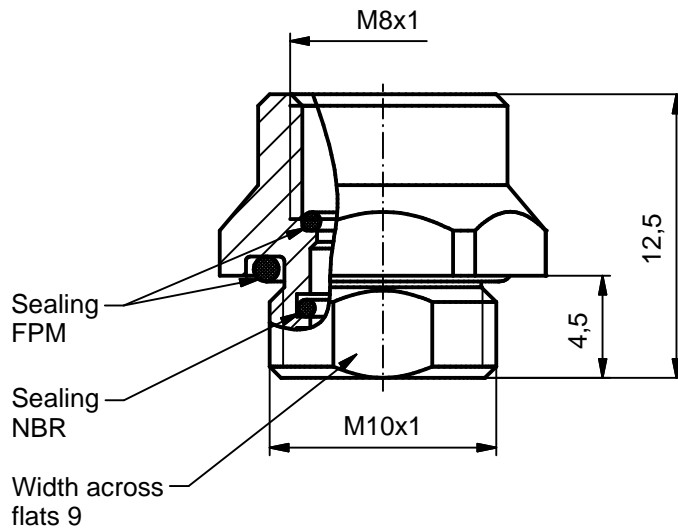


**Materials:**

Socket housing: CuZn  
Housing surface: nickel plated  
Sealing: FPM, NBR

**Installation specification:**

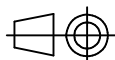
Recommended torque: 1-1,2 Nm  
Conec installation tool: Torque wrench:  
36-000200  
Insert across flats 13:  
36-000220  
Installation hole: See fig.1 42K1A1119



DO NOT ALTER CAD DRAWING BY HAND

RoHS & REACH compliant

Index: a 25.04.16 rbo Ä6018  
Text across flats 12 in specification deleted



dim. in mm

	date	name
drawn	17.08.15	Gitinow
appd.	17.08.15	Schramm

general tolerance: 0 ± 0,50mm  
0,0 ± 0,25mm  
0,00 ± 0,10mm  
+ ± 5°

THIS DRAWING MAY NOT BE COPIED OR REPRODUCED IN ANY WAY, AND MAY NOT BE PASSED ON TO A THIRD PARTY WITHOUT WRITTEN PERMISSION. OWNERSHIP AND COPYRIGHT OF CONEC GmbH

**CONEC**®

title:

Housing female M10x1 H9,  
frontmounting

dwg no:

42K1A1078

part no:

42-01481