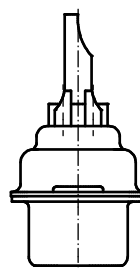
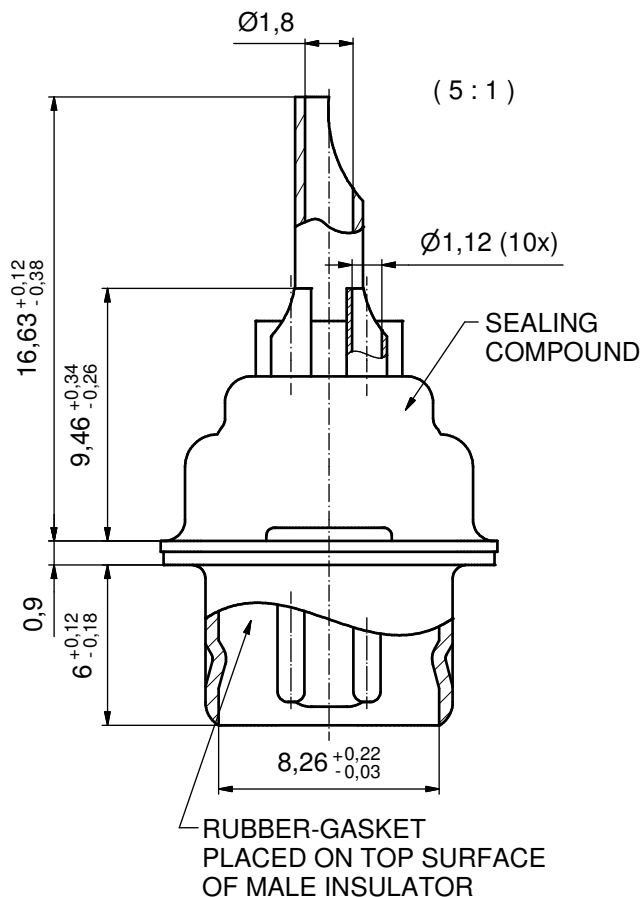
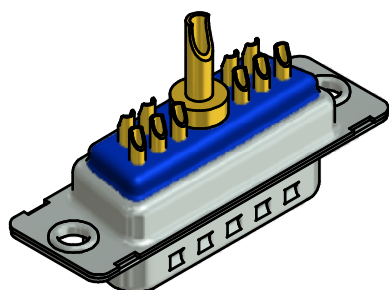
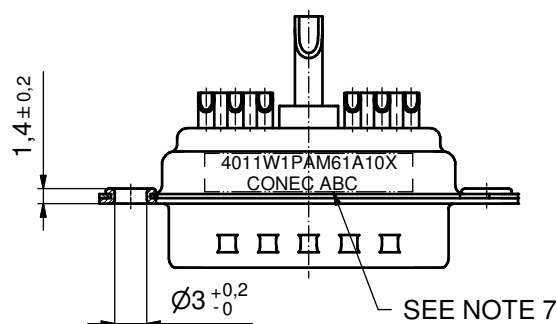
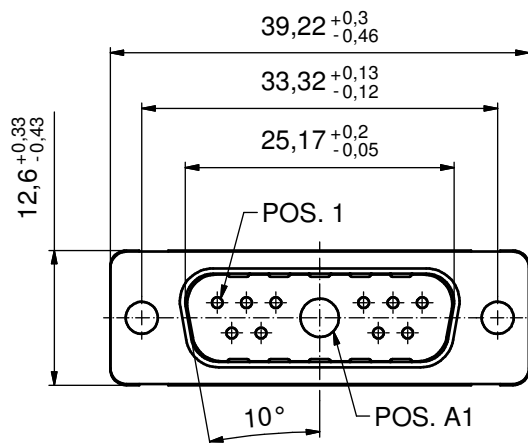


Solder Instruction

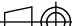

1. Cable should be prepared for soldering. The cable/wires must be pretinned.
2. Insert cable/wire into solder cup.
3. Signal Contact
 - 3.1. Operate the soldering iron at 350°C, 50 Watt max. and use a pencil tip.
 - 3.2. Put tip to wire in solder cup.
 - 3.3. After 1 second bring in solder.
 - 3.4. Heat for 3 seconds longer. Do not heat contact more than 4 seconds in total.
4. Power Contact
 - 4.1. Operate the soldering iron at 350°C, 100 Watt max. and use a pencil tip.
 - 4.2. Apply some solder to the solder tip of the soldering iron.
 - 4.3. Put tip to wire in solder cup.
 - 4.4. After 1 second bring in solder.
 - 4.5. Heat for 5 seconds longer. Do not heat contact more than 6 seconds in total.
5. Remove soldering iron.
6. Wait until solder gets rigid again.
7. Do not solder adjacent contacts consecutively, alternate position within the connector to minimize heat build up.



NOTES:

1. METALSHELLS: COPPER ALLOY; min. 315µin TIN over 40-80µin NICKEL
2. INSULATORS: PBT GF UL 94 V-0; GREEN
3. SIGNAL CONTACTS: COPPER ALLOY; PLATING: GOLD FLASH over NICKEL
SOLDER CUP ACCEPTS CABLE AWG 20
4. HIGH POWER CONTACTS 10A: COPPER ALLOY;
PLATING, MATING SIDE: GOLD FLASH over NICKEL
PLATING, TERMINATION SIDE: GOLD FLASH over NICKEL
SOLDER CUP ACCEPTS CABLE AWG 16-20
5. RUBBER GASKET: TPE; BLACK
6. SEALING COMPOUND: PUR; BLUE
7. CONNECTOR IS PART MARKED: 4011W1PAM61A10X CONEC ABC

Directive 2002/95/EC RoHS compliant

THIS DRAWING MAY NOT BE COPIED OR REPRODUCED IN ANY WAY, AND MAY NOT BE PASSED ON TO A THIRD PARTY WITHOUT WRITTEN PERMISSION. OWNERSHIP AND COPYRIGHT OF CONEC GmbH	DO NOT ALTER CAD DRAWING BY HAND				tolerance		 dim. in mm	scale: 2:1 (5:1)	
								material: SEE NOTES	
					date	name	title: D-SUB COMBINATION MALE 11W1P SOLDER CUP for installation into water resistant hood		
					drawn	20.05.14 Henneboel			
					appd.	21.05.14 Schmidt			
					norm				
					d-old				
							dwg no:		DIN-A3
	a	Original					15K1A1486		sh: 1
	rev.	description	date	name			part no: 4011W1PAM61A10X		