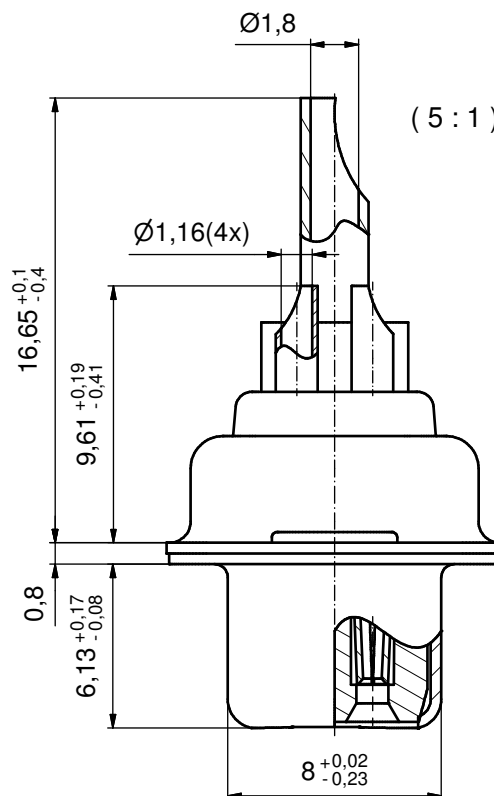
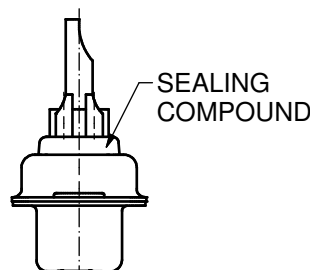
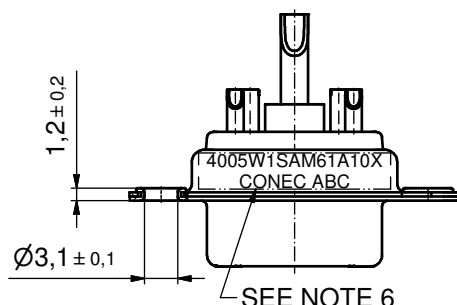
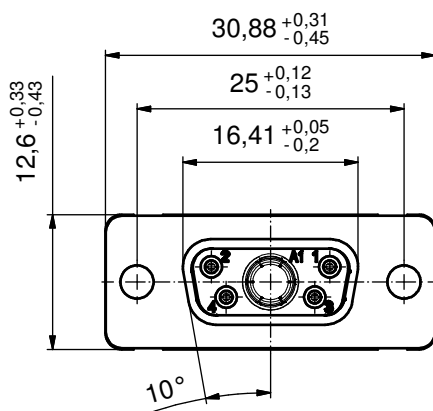


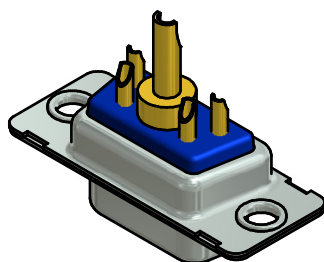
Solder Instruction

1. Cable should be prepared for soldering. The cable/wires must be pretinned.
2. Insert cable/wire into solder cup.
3. Signal Contact
- 3.1. Operate the soldering iron at 350 °C, 50 Watt max. and use a pencil tip.
- 3.2. Put tip to wire in solder cup.
- 3.3. After 1 second bring in solder.
- 3.4. Heat for 3 seconds longer. Do not heat contact more than 4 seconds in total.
4. Power Contacts
- 4.1. Operate the soldering iron at 350 °C, 100 Watt max. and use a pencil tip.
- 4.2. Apply some solder to the solder tip of the soldering iron
- 4.3. Put tip to wire in solder cup.
- 4.4. After 1 second bring in solder.
- 4.5. Heat for 5 seconds longer. Do not heat contact more than 6 seconds in total.
- 4.6 Remove soldering iron.
- 4.7. Wait until solder gets rigid again.
5. Do not solder adjacent contacts consecutively, alternate position within the connector to minimize heat build up.

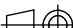


NOTES:

1. METALSHELLS: COPPER ALLOY; min. 315µin TIN over 40-80µin NICKEL
2. INSULATORS: PBT GF UL 94 V-0, GREEN
3. SIGNAL CONTACTS: COPPER ALLOY
PLATING: GOLD FLASH over NICKEL
SOLDER CUP ACCEPTS CABLE AWG 20
4. HIGH POWER CONTACT 10A: COPPER ALLOY
PLATING MATING AREA: GOLD FLASH over NICKEL
PLATING TERMINATION SIDE: GOLD FLASH over NICKEL
SOLDER CUP ACCEPTS CABLE AWG 16-20
5. SEALING COMPOUND: PUR; BLUE
6. CONNECTOR IS PART MARKED: 4005W1SAM61A10X CONEC ABC



Directive 2002/95/EC RoHS compliant

| | | | | | | | | | | | | | | | |
|---|--|----------------|--|----------------------------------|--|-------|---|---------|-----------|--------------------------|-----------|-----------------|--|---|--|
| THIS DRAWING MAY NOT BE COPIED OR REPRODUCED IN ANY WAY, AND MAY NOT BE PASSED ON TO A THIRD PARTY WITHOUT WRITTEN PERMISSION. OWNERSHIP AND COPYRIGHT OF CONEC GmbH | | | | tolerance | | |  dim. in mm | | scale: | | 2:1 (5:1) | | | | |
| | | | | | | | | | material: | | see notes | | | | |
| | | | | DO NOT ALTER CAD DRAWING BY HAND | | | | | | date | | name | | title: D-SUB COMBINATION FEMALE 5W1S SOLDER CUP for installation into water resistant hood | |
| | | | | | | | | | | drawn 15.08.12 | | Henneboel | | | |
| | | appd. 15.08.12 | | | | | | Fischer | | | | | | | |
| | | norm | | | | | | | | | | | | | |
| | | | | | | d-old | | | | dwg no: 15K1A1118 | | DIN-A3 sh: 1 | | | |
| a | | Original | | | | | | | | | | | | | |
| rev. | | description | | date | | name | | CONEC® | | | | | | | |
| | | | | | | | | | | part no: | | 4005W1SAM61A10X | | | |